

Surface Mount

Voltage Controlled Oscillator

MOS-975-119+

Linear Tuning 900 to 975 MHz

Features

- linear tuning characteristics
- low phase noise
- low pulling & pushing
- aqueous washable



CASE STYLE: CZ682

Applications

- wireless communications
- line for receiver
- land mobile
- defence systems
- GSM

+RoHS Compliant
The +Suffix identifies RoHS Compliance. See our web site for RoHS Compliance methodologies and qualifications

Electrical Specifications

MODEL NO.	FREQ. (MHz)		POWER OUTPUT (dBm)	PHASE NOISE dBc/Hz SSB at offset frequencies, kHz				TUNING					NON HARMONIC SPURIOUS (dBc)	HARMONICS (dBc)		PULLING pk-pk @ 12 dB (MHz)	PUSHING (MHz/V)	DC OPERATING POWER		
	Min.	Max.		Typ.				VOLTAGE RANGE (V)	SENSI- TIVITY (MHz/V)	PORT CAP (pF)	3 dB MODULATION BANDWIDTH (MHz)	Typ.		Typ.	Typ.			Typ.	Vcc (volts)	Current (mA)
				1	10	100	1000	Min.	Max.	Typ.	Typ.	Typ.		Typ.	Typ.			Max.	Max.	
MOS-975-119+	900	975	+0.8	-90	-114	-135	-154	0.5	14	8	35	70	-90	-25	-15	0.3	0.3	5	40	

Pin Connections

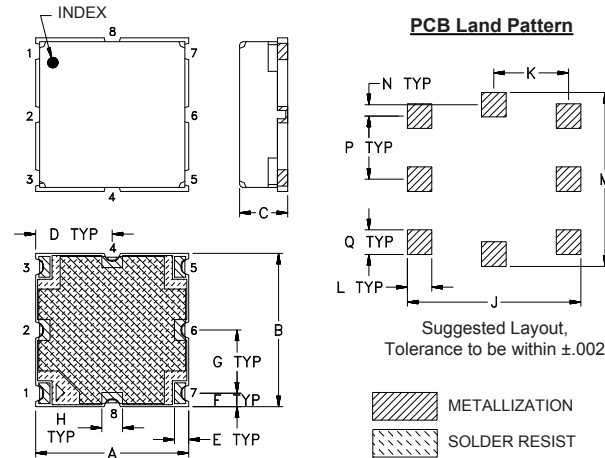
RF OUT	5
VCC	3
V-TUNE	1
GROUND	2,4,6,7,8

Maximum Ratings

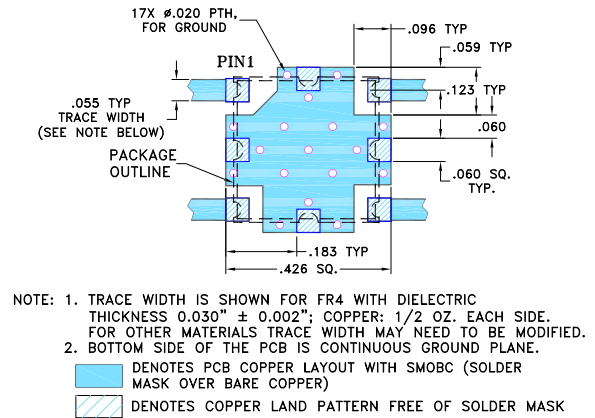
Operating Temperature	-55°C to 85°C
Storage Temperature	-55°C to 100°C
Absolute Max. Supply Voltage (Vcc)	6V
Absolute Max. Tuning Voltage (Vtune)	16V
All specifications	50 ohm system

Permanent damage may occur if any of these limits are exceeded.

Outline Drawing



Demo Board MCL P/N: TB-128 Suggested PCB Layout (PL-023)



Outline Dimensions (inch/mm)

A	B	C	D	E	F	G	H	J	K	L	M	N	P	Q	wt. grams
.375	.375	.131	.188	.035	.033	.154	.050	.425	.183	.060	.425	.028	.154	.060	.60
9.52	9.52	3.33	4.77	0.89	0.84	3.91	1.27	10.80	4.65	1.52	10.80	0.71	3.91	1.52	

Notes

- Performance and quality attributes and conditions not expressly stated in this specification document are intended to be excluded and do not form a part of this specification document.
- Electrical specifications and performance data contained in this specification document are based on Mini-Circuit's applicable established test performance criteria and measurement instructions.
- The parts covered by this specification document are subject to Mini-Circuits standard limited warranty and terms and conditions (collectively, "Standard Terms"); Purchasers of this part are entitled to the rights and benefits contained therein. For a full statement of the Standard Terms and the exclusive rights and remedies thereunder, please visit Mini-Circuits' website at www.minicircuits.com/MCLStore/terms.jsp



www.minicircuits.com P.O. Box 350166, Brooklyn, NY 11235-0003 (718) 934-4500 sales@minicircuits.com

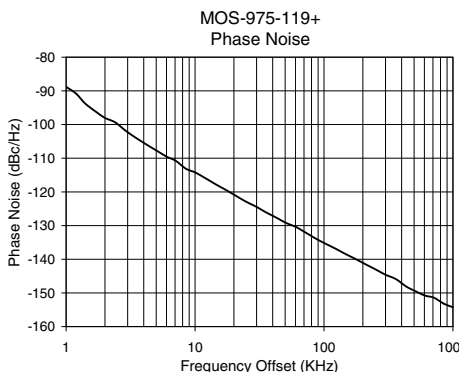
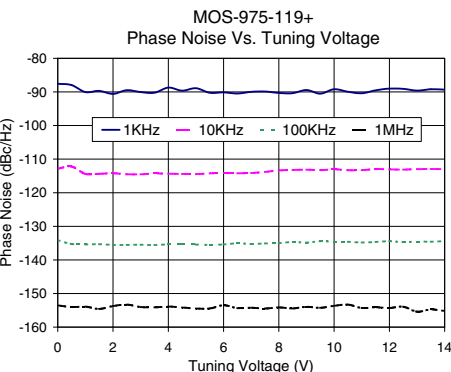
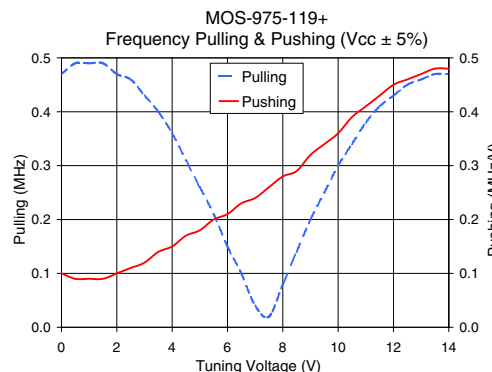
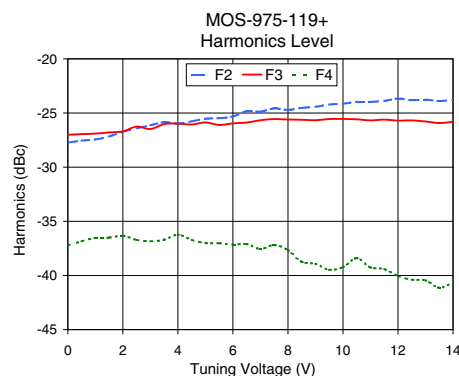
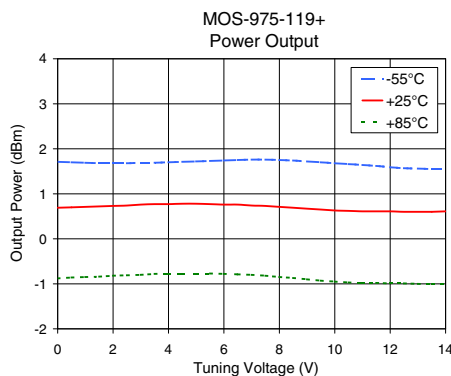
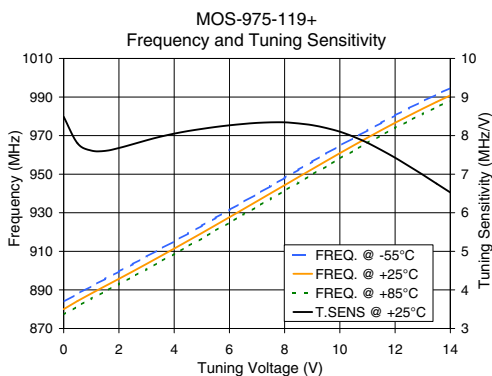
REV. A
M151108
EDR-9992F1
MOS-975-119+
RAV
150512
Page 1 of 2

Performance Data & Curves*

MOS-975-119+

V TUNE	TUNE SENS (MHz/V)	FREQUENCY (MHz)			POWER OUTPUT (dBm)			Icc (mA)	HARMONICS (dBc)			FREQ. PUSH (MHz/V)	FREQ. PULL (MHz)	PHASE NOISE (dBc/Hz) at offsets				FREQ OFFSET (KHz)	PHASE NOISE at 939 MHz (dBc/Hz)
		-55°C	+25°C	+85°C	-55°C	+25°C	+85°C		F2	F3	F4			1kHz	10kHz	100kHz	1MHz		
		0.00	8.49	883.8	880.0	877.2	1.71		0.69	-0.88	33.24			-27.7	-27.0	-37.2	0.10		
0.50	7.80	888.0	884.3	881.5	1.70	0.70	-0.86	33.23	-27.6	-27.0	-36.9	0.09	0.49	-88.0	-112.2	-135.3	-154.0	2.0	-98.04
1.00	7.61	891.9	888.2	885.4	1.69	0.71	-0.85	33.23	-27.4	-26.9	-36.5	0.09	0.49	-90.1	-114.4	-135.4	-153.9	3.5	-104.02
2.50	7.78	903.4	899.6	896.9	1.68	0.74	-0.81	33.22	-26.4	-26.3	-36.7	0.11	0.46	-89.5	-114.5	-135.5	-153.3	6.0	-109.50
3.00	7.88	907.3	903.5	900.7	1.69	0.76	-0.80	33.22	-26.1	-26.5	-36.8	0.12	0.43	-90.1	-114.5	-135.5	-154.0	8.5	-113.14
3.50	7.97	911.2	907.4	904.7	1.69	0.77	-0.78	33.22	-25.9	-26.0	-36.7	0.14	0.40	-90.2	-114.3	-135.6	-154.1	10.0	-114.21
4.00	8.05	915.2	911.4	908.6	1.70	0.77	-0.77	33.22	-26.0	-26.0	-36.2	0.15	0.36	-88.7	-114.4	-135.4	-153.9	20.8	-121.19
4.50	8.12	919.2	915.4	912.7	1.71	0.78	-0.77	33.22	-25.8	-26.1	-36.7	0.17	0.31	-89.6	-114.4	-135.4	-154.2	35.5	-126.07
5.50	8.22	927.3	923.6	920.8	1.73	0.77	-0.77	33.22	-25.5	-26.1	-37.0	0.20	0.21	-90.3	-114.3	-135.5	-154.5	60.7	-130.43
6.00	8.27	931.5	927.7	924.9	1.74	0.76	-0.78	33.22	-25.3	-26.0	-37.2	0.21	0.15	-90.1	-114.2	-135.4	-153.5	86.7	-133.90
6.50	8.30	935.6	931.8	929.0	1.75	0.76	-0.79	33.22	-24.8	-25.9	-37.1	0.23	0.10	-90.5	-114.2	-135.1	-154.4	100.0	-135.17
7.00	8.33	939.7	936.0	933.1	1.76	0.74	-0.80	33.22	-24.9	-25.7	-37.6	0.24	0.04	-90.0	-114.2	-135.3	-154.2	148.1	-138.51
7.50	8.34	943.9	940.1	937.3	1.76	0.73	-0.82	33.22	-24.6	-25.6	-37.2	0.26	0.02	-89.9	-113.8	-135.1	-154.5	177.0	-139.99
8.50	8.32	952.3	948.5	945.6	1.74	0.69	-0.87	33.22	-24.5	-25.6	-38.7	0.29	0.14	-90.4	-113.2	-134.7	-154.4	211.6	-141.57
9.50	8.20	960.6	956.8	954.0	1.70	0.65	-0.93	33.23	-24.2	-25.6	-39.5	0.34	0.25	-90.5	-113.3	-134.5	-154.3	302.4	-144.66
10.00	8.10	964.7	960.9	958.1	1.68	0.63	-0.95	33.22	-24.1	-25.5	-39.2	0.36	0.30	-89.2	-113.0	-134.6	-153.7	361.5	-145.90
11.00	7.81	972.7	968.9	966.2	1.64	0.61	-0.98	33.23	-24.0	-25.7	-39.3	0.41	0.38	-90.4	-113.3	-134.8	-154.3	507.5	-149.41
12.00	7.43	980.4	976.6	973.9	1.59	0.61	-0.99	33.23	-23.7	-25.7	-40.0	0.45	0.43	-89.0	-113.0	-134.4	-154.3	606.7	-150.78
13.50	6.76	991.3	987.4	984.7	1.55	0.60	-1.01	33.24	-23.9	-25.9	-41.1	0.48	0.47	-89.2	-112.9	-134.6	-154.7	851.6	-153.20
14.00	6.53	994.7	990.8	988.1	1.55	0.61	-1.01	33.24	-23.8	-25.8	-40.7	0.48	0.47	-89.3	-113.0	-134.4	-155.2	1000.0	-154.27

*at 25°C unless mentioned otherwise



Notes

- A. Performance and quality attributes and conditions not expressly stated in this specification document are intended to be excluded and do not form a part of this specification document.
- B. Electrical specifications and performance data contained in this specification document are based on Mini-Circuit's applicable established test performance criteria and measurement instructions.
- C. The parts covered by this specification document are subject to Mini-Circuits standard limited warranty and terms and conditions (collectively, "Standard Terms"); Purchasers of this part are entitled to the rights and benefits contained therein. For a full statement of the Standard Terms and the exclusive rights and remedies thereunder, please visit Mini-Circuits' website at www.minicircuits.com/MCLStore/terms.jsp

