

Plug-In High Pass Filter

PHP-700+

50Ω 700 to 1800 MHz

Maximum Ratings

Operating Temperature	-55°C to 100°C
Storage Temperature	-55°C to 100°C
RF Power Input	0.5W max.

Permanent damage may occur if any of these limits are exceeded.

Pin Connections

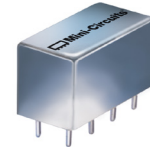
INPUT	1
OUTPUT	8
GROUND	2,3,4,5,6,7
CASE GROUND	2,3,4,5,6,7

Features

- rugged shielded case, hermetically sealed
- other standard and custom PHP models available with wide selection of fco

Applications

- lab use
- transmitters/receivers
- military/hi-rel application



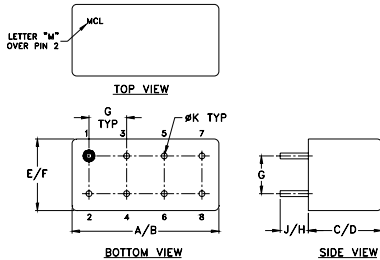
CASE STYLE: A01

+RoHS Compliant
The +Suffix identifies RoHS Compliance. See our web site for RoHS Compliance methodologies and qualifications

High Pass Filter Electrical Specifications

STOPBAND (MHz)		fco (MHz) Nom.	PASSBAND (MHz)	VSWR (:1)	
(loss > 40 dB)	(loss > 20 dB)	(loss 3 dB)	(loss < 1 dB)	Stopband Typ.	Passband Typ.
DC-400	400-520	640	700-1800	17	1.6

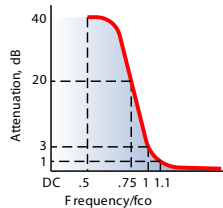
Outline Drawing



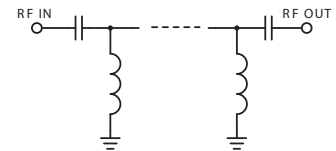
Outline Dimensions (inch/mm)

A	B	C	D	E	F
.770	.800	.385	.400	.370	.400
19.56	20.32	9.78	10.16	9.40	10.16
G	H	J	K	wt	
.200	.20	.14	.031	grams	
5.08	5.08	3.56	0.79	5.2	

typical frequency response

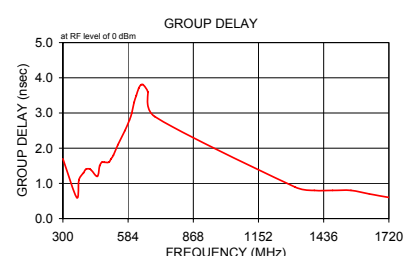
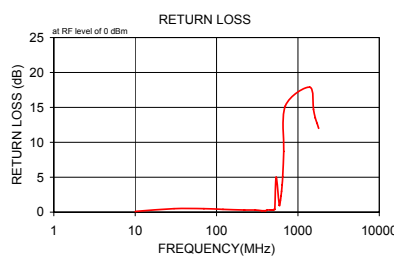
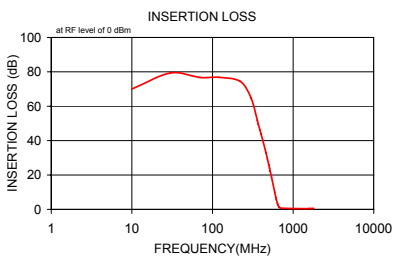


electrical schematic



Typical Performance Data

Frequency (MHz)	Insertion Loss (dB)		Return Loss (dB)	Frequency (MHz)	Group Delay (nsec)
	\bar{x}	σ			
10.00	69.97	2.7	0.1	300.00	1.70
30.00	79.30	6.2	0.5	360.00	0.58
70.00	76.67	6.3	0.5	370.00	1.11
120.00	76.75	5.9	0.4	390.00	1.29
220.00	74.46	5.8	0.3	400.00	1.39
300.00	64.87	2.8	0.3	420.00	1.35
360.00	51.59	0.9	0.2	450.00	1.20
370.00	49.50	1.2	0.2	460.00	1.45
390.00	45.90	0.8	0.2	470.00	1.58
400.00	43.94	0.9	0.2	480.00	1.65
420.00	40.15	0.7	0.3	500.00	1.61
460.00	32.96	0.6	0.3	510.00	1.72
480.00	29.32	0.6	0.3	520.00	1.80
500.00	25.76	0.6	0.3	540.00	2.05
510.00	24.00	0.5	0.4	570.00	2.46
520.00	22.24	0.5	0.4	590.00	2.75
540.00	18.71	0.5	5.0	600.00	3.01
590.00	10.13	0.3	1.0	610.00	3.25
610.00	7.01	0.3	1.7	620.00	3.52
620.00	5.60	0.2	2.3	630.00	3.69
630.00	4.36	0.2	3.0	640.00	3.78
640.00	3.29	0.1	3.9	650.00	3.75
650.00	2.44	0.1	5.1	670.00	3.55
670.00	1.30	0.1	8.7	700.00	2.94
700.00	0.65	0.1	15.2	1310.00	0.89
1395.00	0.36	0.1	17.9	1395.00	0.85
1555.00	0.45	0.1	14.7	1475.00	0.76
1635.00	0.50	0.1	13.5	1555.00	0.78
1720.00	0.54	0.1	12.7	1635.00	0.75
1800.00	0.57	0.1	12.0	1720.00	0.65



Notes

- Performance and quality attributes and conditions not expressly stated in this specification document are intended to be excluded and do not form a part of this specification document.
- Electrical specifications and performance data contained in this specification document are based on Mini-Circuit's applicable established test performance criteria and measurement instructions.
- The parts covered by this specification document are subject to Mini-Circuit's standard limited warranty and terms and conditions (collectively, "Standard Terms"); Purchasers of this part are entitled to the rights and benefits contained therein. For a full statement of the Standard Terms and the exclusive rights and remedies thereunder, please visit Mini-Circuit's website at www.minicircuits.com/MCLStore/terms.jsp

