

High Pass Filter

PHP-EDU1200

Plug-In

Important Note

This model has been designed, built and tested in our engineering department. Performance data represents model capability. At present it is a non-catalog model. On request, we can supply a final specification sheet, part number and price/delivery information.

Please click "Back", and then click "Contact Us" for Applications support.



CASE STYLE : A01

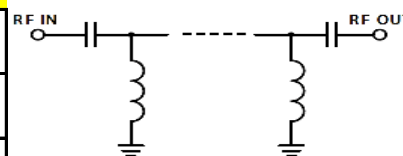
ELECTRICAL SPECIFICATIONS 50Ω @ +25°C

Parameter	Min.	Typ.	Max.	Units
Passband (Loss < 1 dB)	600		1600	MHz
Insertion loss 3 dB		560		MHz
Stopband (Loss > 40 dB)	DC	310		MHz
(Loss > 20 dB)	310	410		MHz
Passband VSWR		1.6		(:1)
Stopband VSWR		20		(:1)

Functional Schematic

MAXIMUM RATINGS

Operating Temperature	-55°C to 100°C
Storage Temperature	-55°C to 100°C
RF Power Input	200mW



PIN CONNECTIONS

Input	1
Output	8
Ground	2,4,7
Case Ground	2,3,4,5,6,7



P.O. Box 350166, Brooklyn, New York 11235-0003 (718) 934-4500 Fax (718) 332-4661 For detailed performance specs & shopping online sr



The Design Engineers Search Engine Provides ACTUAL Data Instantly From MINI-CIRCUITS At: www.minicircuits.com

RF/IF MICROWAVE COMPONENTS



REV. X1
PHP-EDU1200
URJ
120818
Page 1 of 1