

# Engineering Development Model

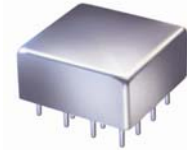
## Voltage Controlled Oscillator

POSA-ED8383A/2

### Important Note

This model has been designed, built and tested in our engineering department. Performance data represents model capability. At present it is a non-catalog model. On request, we can supply a final specification sheet, part number and price/delivery information.

Please click "Back", and then click "Contact Us" for Applications support.



CASE STYLE : C145

ELECTRICAL SPECIFICATIONS 50Ω				
Parameter	Min.	Typ.	Max.	Units
Frequency	145		175	MHz
Tuning Voltage	2		18	V
Power Output		11.5		dBm
Phase Noise				
at 1 kHz offset		-100		dBc/Hz
at 10 KHz offset		-125		dBc/Hz
at 100 KHz offset		-145		dBc/Hz
at 1000 kHz offset		-161		dBc/Hz
Pulling at 12 dB Br PK-PK all phases		0.40		MHz
Pushing at Vcc ± 5%		0.10		MHz/V
Tuning Sensitivity		40577.00		MHz/V
Harmonic Suppression		-30		dBc
3 dB Modulation Bandwidth		170		kHz
Supply Voltage		12		V
Supply Current			28	mA

MAXIMUM RATINGS	
Operating Temperature	-55°C to 85°C
Storage Temperature	-55°C to 100°C
Absolute Supply Voltage (Vcc)	+15V
Absolute Tuning Voltage (Vtune)	+20V

PIN CONNECTIONS	
RF OUT	8
VCC	5
V-TUNE	14
GROUND	1,2,3,4,6,7,9,10,11,12,13,15,16



P.O. Box 350166, Brooklyn, New York 11235-0003 (718) 934-4500 • Fax (718) 332-4661 For detailed performance specs & shopping online see Mini-Circuits web site  
The Design Engineers Search Engine Provides ACTUAL Data Instantly From MINI-CIRCUITS At: [www.minicircuits.com](http://www.minicircuits.com)



IF/RF MICROWAVE COMPONENTS

REV. X1  
POSA-ED8383A/2  
10/17/2007  
Page 1 of 1