

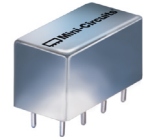
Plug-In

NON-CATALOG

# Power Splitter/Combiner

PSC-4-1W-75+

4 Way-0° 75Ω 0.5 to 400 MHz



Generic photo used for illustration purposes only

CASE STYLE: A01

Units marked as PSC-4-1-75+

+RoHS Compliant

The +Suffix identifies RoHS Compliance. See our web site for RoHS Compliance methodologies and qualifications

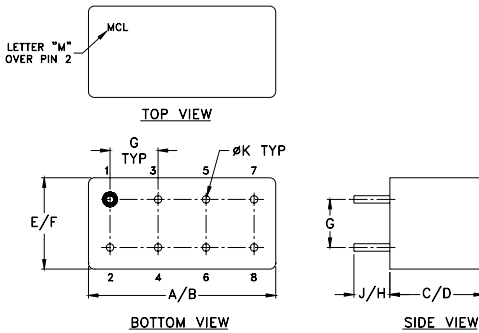
## Maximum Ratings

Operating Temperature	-55°C to 100°C
Storage Temperature	-55°C to 100°C
Power Input (as a splitter)	1W max.
Internal Dissipation	0.250W max.
Permanent damage may occur if any of these limits are exceeded.	

## Pin Connections

SUM PORT	4
PORT 1	7
PORT 2	8
PORT 3	1
PORT 4	2
GROUND	3,5,6
CASE GROUND	3,5,6

## Outline Drawing



## Outline Dimensions (inch/mm)

A	B	C	D	E	F
.770	.800	.385	.400	.370	.400
19.56	20.32	9.78	10.16	9.40	10.16
G	H	J	K		
.200	.20	.14	.031		
5.08	5.08	3.56	0.79		
					wt
					grams
					5.2

## electrical schematic



## Features

- low insertion loss, 0.7 dB typ.
- good isolation, 24 dB typ.
- excellent amplitude unbalance, 0.1dB typ.
- rugged welded construction

## Applications

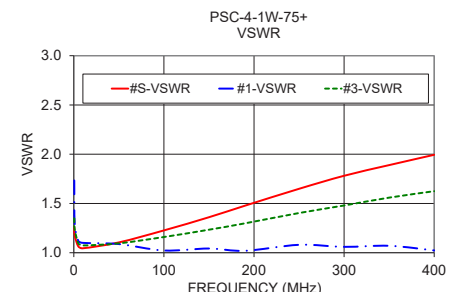
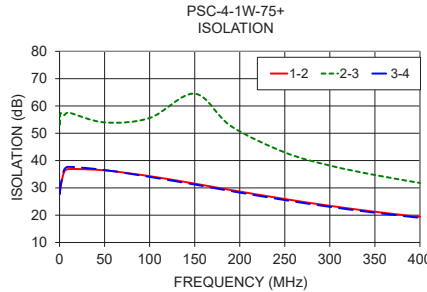
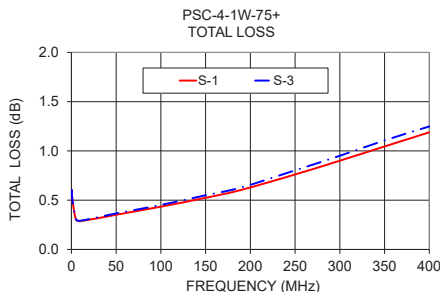
- HF/VHF
- amateur FM radio
- instrumentation

## Electrical Specifications

Parameter	Frequency (MHz)	Min.	Typ.	Max.	Unit
<b>Frequency Range</b>		.5		400	MHz
<b>Insertion Loss Above 6.0 dB</b>	0.5-5	—	0.6	1.2	dB
	5-100	—	0.4	0.9	
	100-250	—	0.7	1.2	
	250-400	—	1.1	1.6	
<b>Isolation</b>	0.5-5	20	24	—	dB
	5-250	22	26	—	
	250-400	17	20	—	
<b>Phase Unbalance</b>	0.5-200	—	1.0	4.0	Degree
	200-400	—	2.0	6.0	
<b>Amplitude Unbalance</b>	0.5-200	—	0.1	0.4	dB
	200-400	—	0.2	0.9	
<b>VSWR (Port S)</b>	0.5-5	—	1.20	—	:1
	5-100	—	1.15	—	
	100-200	—	1.40	—	
<b>VSWR (Port 1-4)</b>	0.5-5	—	1.80	—	:1
	5-100	—	1.30	—	
	100-200	—	1.15	—	
	200-400	—	1.30	—	

## Typical Performance Data

Freq. (MHz)	Insertion Loss (dB)				Amp. Unbal. (dB)	Isolation (dB)			Phase Unbal. (deg.)	VSWR S	VSWR 1	VSWR 2	VSWR 3	VSWR 4
	S-1	S-2	S-3	S-4		1-2	2-3	3-4						
0.5	0.60	0.60	0.60	0.60	0.01	27.77	53.23	27.92	0.08	1.26	1.73	1.35	1.35	1.35
1.0	0.51	0.50	0.51	0.51	0.01	30.06	57.26	30.51	0.04	1.17	1.30	1.24	1.24	1.24
5.0	0.31	0.32	0.31	0.31	0.01	35.77	56.59	36.57	0.04	1.06	1.12	1.10	1.10	1.10
10.0	0.29	0.30	0.29	0.29	0.01	36.88	57.56	37.71	0.04	1.05	1.10	1.07	1.07	1.07
50.0	0.35	0.36	0.37	0.36	0.01	36.41	53.98	36.54	0.07	1.10	1.09	1.10	1.10	1.10
100.0	0.43	0.44	0.45	0.45	0.02	34.30	55.59	34.02	0.17	1.23	1.02	1.16	1.16	1.17
150.0	0.52	0.54	0.55	0.56	0.04	31.56	64.50	31.22	0.28	1.36	1.04	1.23	1.23	1.25
190.0	0.60	0.62	0.63	0.66	0.05	29.22	52.68	28.84	0.41	1.48	1.02	1.30	1.30	1.31
250.0	0.76	0.79	0.80	0.85	0.09	25.93	42.98	25.53	0.70	1.65	1.08	1.40	1.40	1.42
300.0	0.90	0.92	0.95	1.00	0.10	23.43	38.17	23.06	0.96	1.78	1.06	1.48	1.48	1.51
350.0	1.05	1.08	1.11	1.18	0.14	21.25	34.72	20.91	1.26	1.89	1.07	1.56	1.56	1.60
400.0	1.19	1.23	1.25	1.34	0.15	19.37	31.80	19.03	1.62	1.99	1.02	1.64	1.62	1.66



### Notes

- Performance and quality attributes and conditions not expressly stated in this specification document are intended to be excluded and do not form a part of this specification document.
- Electrical specifications and performance data contained in this specification document are based on Mini-Circuit's applicable established test performance criteria and measurement instructions.
- The parts covered by this specification document are subject to Mini-Circuits standard limited warranty and terms and conditions (collectively, "Standard Terms"); Purchasers of this part are entitled to the rights and benefits contained therein. For a full statement of the Standard Terms and the exclusive rights and remedies thereunder, please visit Mini-Circuits' website at [www.minicircuits.com/WCLStore/terms.jsp](http://www.minicircuits.com/WCLStore/terms.jsp)

