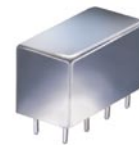


Plug-In Frequency Mixer

Level 23 (LO Power +23 dBm) 0.07 to 200 MHz

RAY-3+ RAY-3



CASE STYLE: A01
PRICE: \$45.20 ea. QTY (1-9)

+ RoHS compliant in accordance with EU Directive (2002/95/EC)

The +Suffix identifies RoHS Compliance. See our web site for RoHS Compliance methodologies and qualifications.

Maximum Ratings

Operating Temperature	-55°C to 100°C
Storage Temperature	-55°C to 100°C
RF Power	350mW
IF Current	40mA

Pin Connections

LO	8
RF	1
IF	3,4 [^]
GROUND	2,5,6,7
CASE GROUND	2

[^]pins must be connected together externally

Features

- excellent conversion loss, 5.53 dB typ.
- high isolation 40 dB typ. L-R & L-I
- rugged welded construction
- hermetically sealed

Applications

- VHF
- defense & federal communications
- aviation & maritime communications

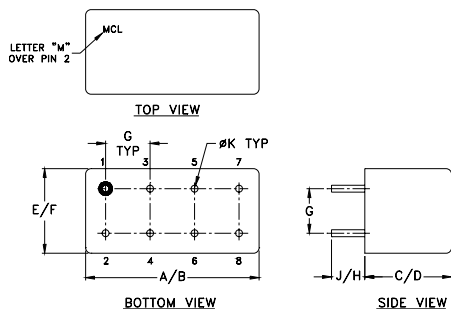
Electrical Specifications

FREQUENCY (MHz)		CONVERSION LOSS (dB)				LO-RF ISOLATION (dB)						LO-IF ISOLATION (dB)					
LO/RF f_L-f_U	IF	Mid-Band m		Total Range Max.	8.0	L		M		U		L		M		U	
		\bar{X}	σ			Typ.	Min.	Typ.	Min.	Typ.	Min.	Typ.	Min.	Typ.	Min.	Typ.	Min.
0.07-200	DC-200	5.53	0.08	7.5	8.0	55	45	40	30	30	25	55	45	40	30	30	20

1 dB COMP.: +15 dBm typ.

L = low range [f_L to $10 f_L$] M = mid range [$10 f_L$ to $f_U/2$] U = upper range [$f_U/2$ to f_U]
m = mid band [$2f_L$ to $f_U/2$]

Outline Drawing



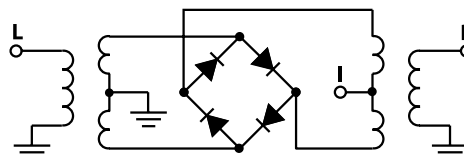
Outline Dimensions (inch/mm)

A	B	C	D	E	F	
.770	.800	.385	.400	.370	.400	
19.56	20.32	9.78	10.16	9.40	10.16	
G	H	J	K		wt	
.200	.20	.14	.031		grams	
5.08	5.08	3.56	0.79		5.2	

Typical Performance Data

Frequency (MHz)		Conversion Loss (dB)	Isolation L-R (dB)	Isolation L-I (dB)	VSWR RF Port (:1)	VSWR LO Port (:1)
RF	LO	LO +23dBm	LO +23dBm	LO +23dBm	LO +23dBm	LO +23dBm
0.07	30.07	5.77	55.55	56.68	1.17	2.42
0.20	30.20	5.58	53.15	57.09	1.18	2.40
1.00	31.00	5.29	52.74	57.07	1.18	2.23
5.00	35.00	5.23	52.57	56.88	1.17	2.21
20.00	50.00	5.27	52.28	56.59	1.17	2.19
34.54	64.54	5.24	51.27	54.69	1.16	2.20
48.33	78.33	5.26	48.91	51.06	1.15	2.20
62.12	92.12	5.28	46.28	47.85	1.15	2.27
69.01	99.01	5.29	44.38	45.65	1.14	2.27
82.80	52.80	5.28	42.67	43.88	1.13	2.28
96.59	66.59	5.28	41.29	41.90	1.13	2.25
103.48	73.48	5.25	39.95	40.89	1.13	2.14
117.27	87.27	5.28	39.22	39.90	1.12	2.10
131.06	101.06	5.29	39.37	39.78	1.12	2.17
144.85	114.85	5.34	38.04	37.10	1.12	2.25
158.63	128.63	5.43	36.70	33.79	1.12	2.29
165.53	135.53	5.47	36.49	31.41	1.13	2.22
179.32	149.32	5.47	36.22	30.50	1.14	2.16
193.10	163.10	5.54	36.47	29.43	1.16	2.18
200.00	170.00	5.51	36.43	29.00	1.16	2.21

Electrical Schematic



Mini-Circuits
ISO 9001 ISO 14001 CERTIFIED

ALL NEW
minicircuits.com

P.O. Box 350166, Brooklyn, New York 11235-0003 (718) 934-4500 Fax (718) 332-4661 For detailed performance specs & shopping online see Mini-Circuits web site



The Design Engineers Search Engine Provides ACTUAL Data Instantly From MINI-CIRCUITS At: www.minicircuits.com

RF/IF MICROWAVE COMPONENTS

REV. A
M98898
RAY-3
DJ/TD/CP/AM
061211
Page 1 of 2

Performance Charts

