

Band Pass Filter

RBP-EDU1642

Surface Mount

Important Note

This model has been designed, built and tested in our engineering department. Performance data represents model capability. At present it is a non-catalog model. On request, we can supply a final specification sheet, part number and price/delivery information.



Please click "Back", and then click "Contact Us" for Applications support.

GP731

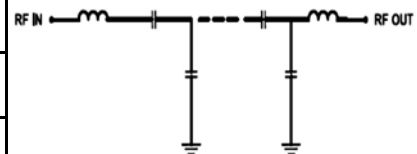
ELECTRICAL SPECIFICATIONS 50Ω @ +25°C

Parameter	Min.	Typ.	Max.	Units
Passband (Loss < 3 dB)	150		170	MHz
Centre frequency		160		MHz
Low Band (Loss > 40 dB)	DC	16		MHz
Low Band (Loss > 20 dB)	DC	116		MHz
High Band (Loss > 20 dB)		204	1000	MHz
High Band (Loss > 40 dB)		360	1000	MHz
Passband VSWR		1.5		(:1)
Stopband VSWR		14		(:1)

Functional Schematic

MAXIMUM RATINGS

Operating Temperature	-40°C to 85°C
Storage Temperature	-55°C to 100°C
RF Power Input	200mW



PIN CONNECTIONS

Input	2
Output	6
Ground	1,3,4,5,7,8



P.O. Box 350166, Brooklyn, New York 11235-0003 (718) 934-4500 Fax (718) 332-4661 For detailed performance specs & shopping online see



The Design Engineers Search Engine Provides ACTUAL Data Instantly From MINI-CIRCUITS At: www.minicircuits.com

RF/IF MICROWAVE COMPONENTS



REV. X1
RBP-EDU1642
URJ
120802
Page 1 of 1