

Surface Mount

# Bandpass Filter

RBPF-440-1+

50Ω      130 to 750 MHz

Features

- Miniature shielded package
- Low insertion loss
- Fast roll-off

CASE STYLE: 99-01-3289

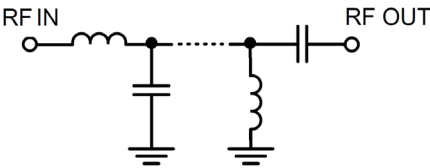
Electrical Specifications

Parameter		F#	Frequency (MHz)	Min.	Typ.	Max.	Unit
Pass Band	Center Frequency	F1-F2	—	—	440	—	MHz
	Insertion Loss	F1-F2	130 - 750	—	1.9	2.4	dB
	Return Loss	F1-F2	130 - 750	12	14	—	dB
Stop Band, Lower	Rejection	DC-F3	DC - 108	20	—	—	dB
Stop Band, Upper	Rejection	F4-F5	860 - 2500	20	—	—	dB

Applications

- Defense/Military
- Military Radio Communications

Functional Schematic

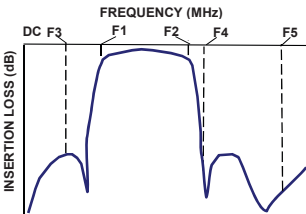


Maximum Ratings	
Operating Temperature	-40°C to 85°C
Storage Temperature	-55°C to 100°C
RF Power Input	27 dBm

Permanent damage may occur if any of these limits are exceeded.

Typical Performance Data at 25°C

Typical Frequency Response



+RoHS Compliant

The +Suffix identifies RoHS Compliance. See our web site for RoHS Compliance methodologies and qualifications

Notes

- A. Performance and quality attributes and conditions not expressly stated in this specification document are intended to be excluded and do not form a part of this specification document.
- B. Electrical specifications and performance data contained in this specification document are based on Mini-Circuit's applicable established test performance criteria and measurement instructions.
- C. The parts covered by this specification document are subject to Mini-Circuits standard limited warranty and terms and conditions (collectively, "Standard Terms"); Purchasers of this part are entitled to the rights and benefits contained therein. For a full statement of the Standard Terms and the exclusive rights and remedies thereunder, please visit Mini-Circuits' website at [www.minicircuits.com/MCLStore/terms.jsp](http://www.minicircuits.com/MCLStore/terms.jsp)



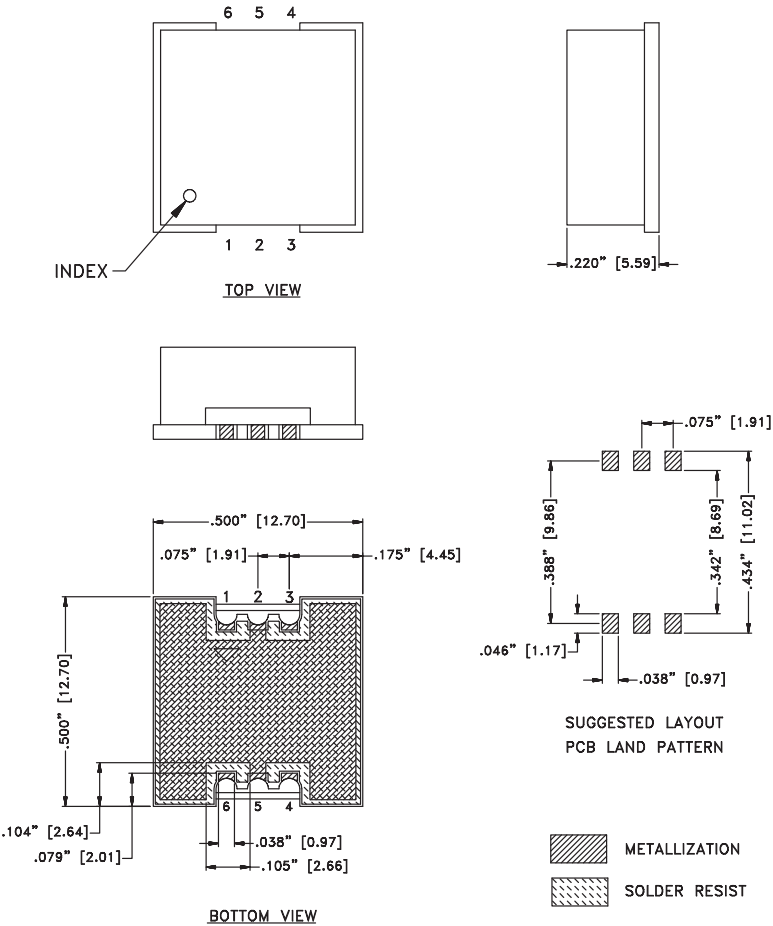
[www.minicircuits.com](http://www.minicircuits.com) P.O. Box 350166, Brooklyn, NY 11235-0003 (718) 934-4500 [sales@minicircuits.com](mailto:sales@minicircuits.com)

REV.X0  
ECO-009352  
RBPF-440-1+  
EDUXXXX  
URJ  
210823  
Page 1 of 2

Pad Connections

INPUT	1
OUTPUT	6
GROUND	2,5
NOT USED	3,4

Outline Drawing



DIMENSIONS ARE IN INCHS [mm].

**Notes**  
A. Performance and quality attributes and conditions not expressly stated in this specification document are intended to be excluded and do not form a part of this specification document.  
B. Electrical specifications and performance data contained in this specification document are based on Mini-Circuit's applicable established test performance criteria and measurement instructions.  
C. The parts covered by this specification document are subject to Mini-Circuits standard limited warranty and terms and conditions (collectively, "Standard Terms"); Purchasers of this part are entitled to the rights and benefits contained therein. For a full statement of the Standard Terms and the exclusive rights and remedies thereunder, please visit Mini-Circuits' website at [www.minicircuits.com/MCLStore/terms.jsp](http://www.minicircuits.com/MCLStore/terms.jsp)