



## USB & ETHERNET CONTROLLED

# Millimeter Wave Switch Matrix **RC-8SPDT-50**

50Ω DC to 50 GHz

### THE BIG DEAL

- Millimeter wave switching (up to 50 GHz)
- 8 x mechanical reflective switches
- High reliability, 2 million switch cycles
- 3W power rating (cold switching)



CASE STYLE: LM3238

### APPLICATIONS

- 5G node / device testing
- Automated test equipment
- Fail-safe / redundancy switching



SOFTWARE PACKAGE

### RoHS Compliant

See our web site for RoHS Compliance methodologies and qualifications

### PRODUCT OVERVIEW

Mini-Circuits' RC-8SPDT-50 houses 8 independent electro-mechanical SPDT switches operating over an extremely wide bandwidth, from DC to 50 GHz with high isolation and low insertion loss. The reflective switches are of a failsafe and break-before-make-configuration, with a minimum lifetime of 2 million switching cycles per switch position, when used within the noted specifications.

The switch box is constructed in a compact, rugged metal case (12.0 x 4.5 x 2.25") with all 2.4 mm (f) RF connectors on the front panel. The switches are controlled via USB or Ethernet, allowing control directly from a PC, or remotely over a network. Full software support is provided, including our user-friendly GUI application for Windows and a full API with programming instructions for Windows and Linux environments (both 32-bit and 64-bit systems).

### KEY FEATURES

Feature	Advantages
Mechanical SPDT switches	Mechanical reflective switches provide high reliability and repeatable performance
Operation from DC to 50 GHz	Supports a wide range of RF test and signal routing applications, including 2G, 3G, 4G and 5G, with a single device.
Break-before-make configuration	Prevents a momentary connection of the old and new signal paths, reducing the inconsistent transient effects that could otherwise be observed during switching
USB & Ethernet control	USB HID and Ethernet (HTTP / Telnet) interfaces provide easy compatibility with a wide range of software setups and programming environments
Full software support	User friendly Windows GUI (graphical user interface) allows manual control straight out of the box, while the comprehensive API (application programming interface) with examples and instructions allows easy automation in most programming environments

REV. OR  
ECO-009687  
RC-8SPDT-50  
MCLNY  
210910





## ELECTRICAL SPECIFICATIONS AT 25°C

Parameter	Conditions (GHz)	Min.	Typ.	Max.	Units
Frequency Range		DC		50	GHz
Path Loss	DC - 12	—	0.2	0.4	dB
	12 - 26	—	0.3	0.7	
	26 - 40	—	0.3	0.8	
	40 - 50	—	0.4	1.1	
Isolation	DC - 12	60	100	—	dB
	12 - 26	55	90	—	
	26 - 50	50	80	—	
VSWR	DC - 12	—	1.15	—	:1
	12 - 26	—	1.30	—	
	26 - 50	—	1.35	—	
Switching Time	—	—	25	—	ms
RF Input Power (Cold Switching)	DC - 12	—	—	20	W
	12 - 26	—	—	10	
	26 - 40	—	—	5	
	40 - 50	—	—	3	
Switch Lifetime (per Switch)	100mW hot switching <sup>1</sup>	2	—	—	million cycles
	1W hot switching	—	1	—	
Rated Current (24V DC Input)	All switches COM<>2	—	1000	—	mA
	All switches COM<>1	—	115	165	
Rated Current (USB)		—	10	20	mA

1. Hot switching powers above this level will degrade the switch lifetime

## MAXIMUM RATINGS

Parameters	Ratings
Operating Temperature	0°C to 40°C
Storage Temperature	-15°C to 85°C
Supply Voltage	26V

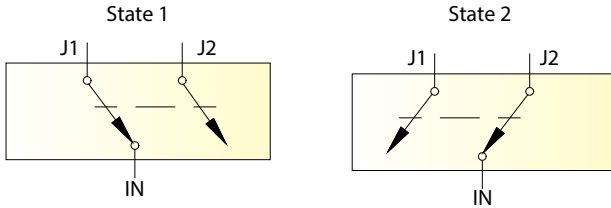


## USB & ETHERNET CONTROLLED

# Millimeter Wave Switch Matrix **RC-8SPDT-50**

### SWITCHING CONFIGURATION:

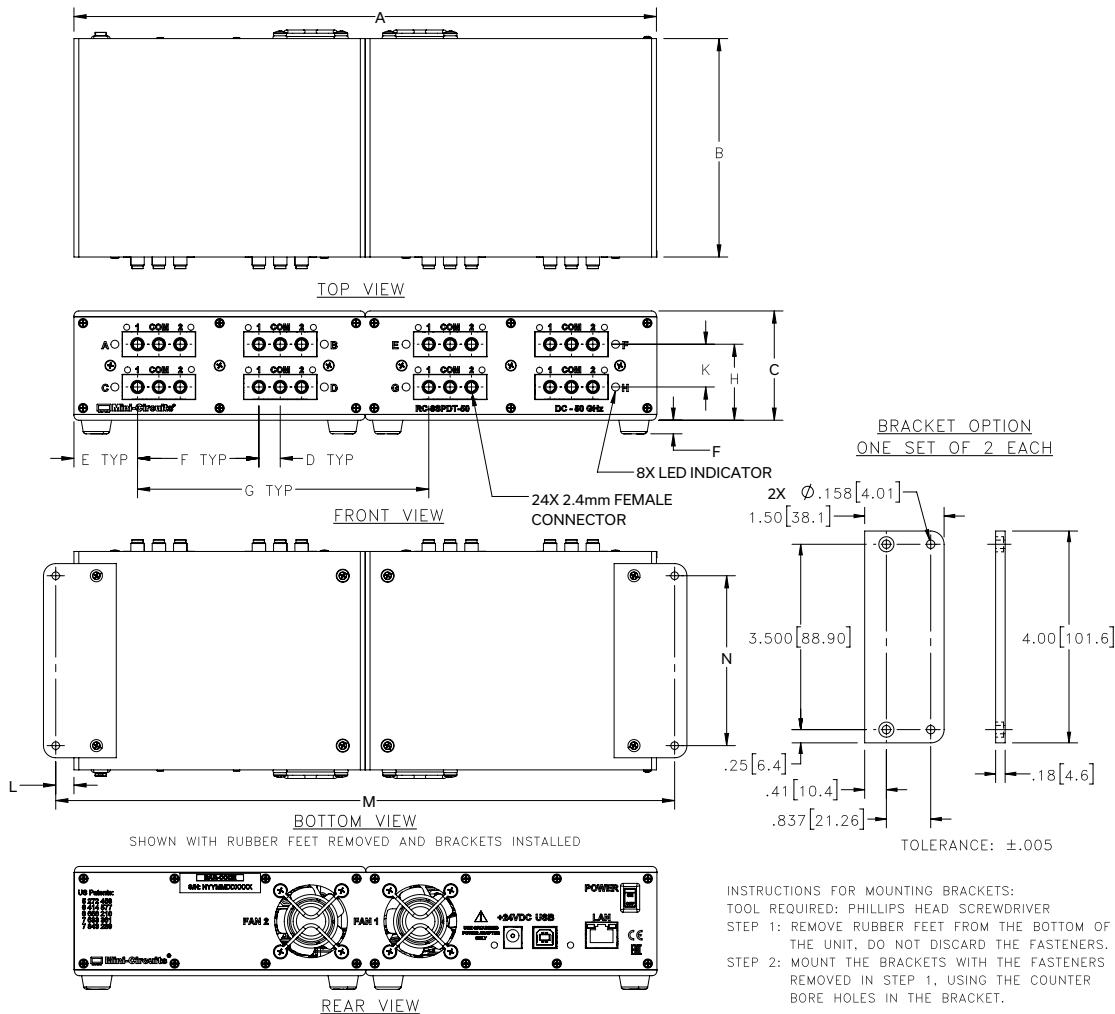
- Fail-safe
- Reflective



### CONNECTIONS

Port Name	Connector Type
RF Switch A-H (COM, 1 & 2 each)	2.4 mm female
USB	USB type-B
Ethernet / LAN	RJ45
24V <sub>DC</sub> Input	2.1mm center positive DC socket

### OUTLINE DRAWING (LM3238)

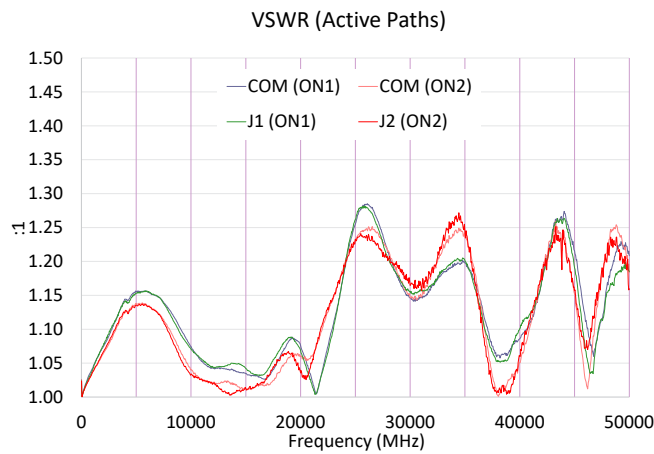
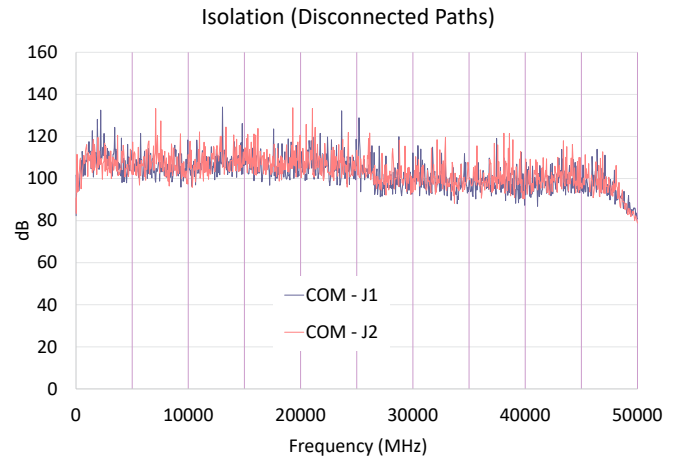
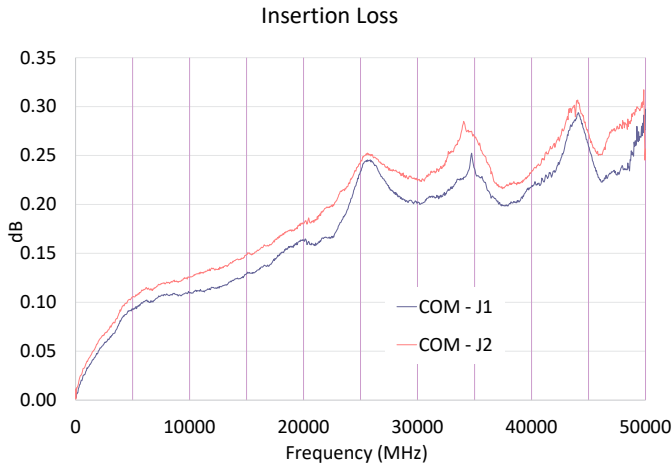


### OUTLINE DIMENSIONS (Inches / mm)

CASE#	A	B	C	D	E	F	G	H	J	K	L	M	N	WT. GRAMS
LM3238	12.00 (304.8)	4.50 (114.3)	2.25 (57.2)	.44 (11.2)	1.31 (33.3)	2.50 (63.5)	6.00 (152.4)	1.57 (39.8)	.28 (7.1)	.88 (22.4)	.38 (9.5)	12.75 (323.9)	3.500 (88.90)	1880



## TYPICAL PERFORMANCE DATA (PER SWITCH)





## SOFTWARE SPECIFICATIONS

### SOFTWARE & DOCUMENTATION DOWNLOAD:

- Mini-Circuits' full software and support package including user guide, Windows GUI, DLL files, programming manual and examples can be downloaded free of charge from: <https://www.minicircuits.com/softwaredownload/rfswitchcontroller.html>
- Please contact [testsolutions@minicircuits.com](mailto:testsolutions@minicircuits.com) for support

### MINIMUM SYSTEM REQUIREMENTS:

Parameter	Requirements	
Interface	USB HID & Ethernet (HTTP & Telnet)	
System Requirements	GUI	Windows 98 or later
	USB API DLL	Windows 98 or later and programming environment with ActiveX or .NET support
	USB Direct Programming	Linux, Windows 98 or later
	Ethernet	Windows, Linux or Mac computer with a network port and Ethernet TCP/IP support
Hardware	Pentium II or later with 256 MB RAM	

### APPLICATION PROGRAMMING INTERFACE (API)

#### ETHERNET SUPPORT:

- Simple ASCII / SCPI command set for attenuator control
- Communication via HTTP or Telnet
- Supported by most common programming environments

#### USB SUPPORT (WINDOWS):

- ActiveX COM DLL file for creation of 32-bit programs
- .NET library DLL file for creation of 32 / 64-bit programs
- Supported by most common programming environments (refer to application note AN-49-001 for summary of supported environments)

#### USB SUPPORT (LINUX):

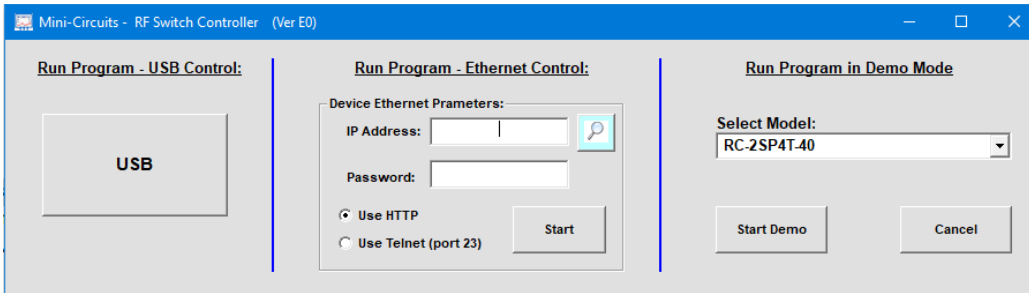
- Direct USB programming using a series of USB interrupt codes

Full programming instructions and examples available for a wide range of programming environments / languages.

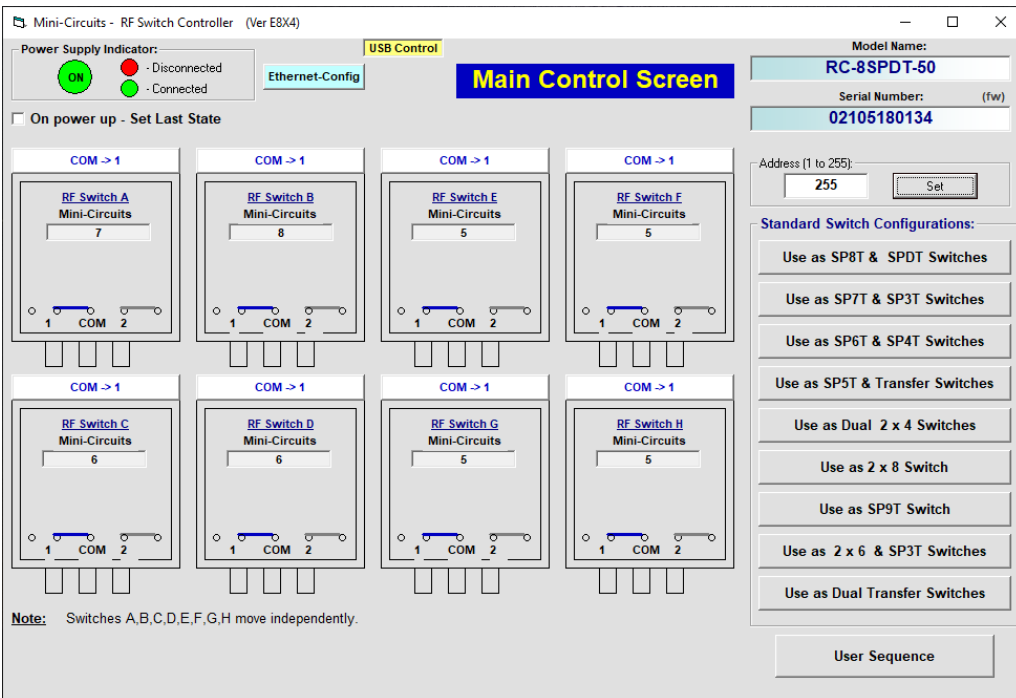


## GRAPHICAL USER INTERFACE (GUI) FOR WINDOWS - KEY FEATURES

- Connect via USB or Ethernet
- Run GUI in "demo mode" to evaluate software without a hardware connection





- View and set switch states at the click of a button
- Configure and run timed switching sequences
- Set start-up switch state
- Configure Ethernet IP settings








**ORDERING INFORMATION**

Please contact Mini-Circuits' Test Solutions department for price and availability: [testsolutions@minicircuits.com](mailto:testsolutions@minicircuits.com)

Model	Description
RC-8SPDT-50	USB & Ethernet controlled SPDT switch matrix

Included Accessories	Part No.	Description
	AC/DC-24-3W1	AC/DC 24V <sub>DC</sub> Grounded Power Adaptor. Operating temperature: 0°C to +40°C, I <sub>Max</sub> =2.5A
See Below	CBL-3W1-XX	AC Power Cord (Select one power cord from below with each Switch Matrix box)
	USB-CBL-AB-3+	2.7 ft (0.8 m) USB Cable: USB type A(Male) to USB type B(Male)

AC Power Cords <sup>5</sup>	Part No.	Description
	CBL-3W1-US	Power Cord for United States
	CBL-3W1-EU	Power Cord for Europe
	CBL-3W1-UK	Power Cord for United Kingdom
	CBL-3W1-AU	Power Cord for Australia and China
	CBL-3W1-IL	Power Cord for Israel

5. If you need a Power cord for a country not listed please contact [testsolutions@minicircuits.com](mailto:testsolutions@minicircuits.com)

**OPTIONAL ACCESSORIES**

USB-CBL-AB-3+	2.7 ft (0.8 m) USB Cable: USB type A(Male) to USB type B (Male)
USB-CBL-AB-7+	6.8 ft (2.1 m) USB Cable: USB type A(Male) to USB type B (Male)
USB-CBL-AB-11+	11 ft (3.4 m) USB Cable: USB type A(Male) to USB type B (Male)
CBL-RJ45-MM-5+	5 ft (1.5 m) Ethernet cable: RJ45(Male) to RJ45 (Male) Cat 5E cable
BKT-272-08+	Bracket (One set of 2 each)

- NOTES**
- Performance and quality attributes and conditions not expressly stated in this specification document are intended to be excluded and do not form a part of this specification document.
  - Electrical specifications and performance data contained in this specification document are based on Mini-Circuit's applicable established test performance criteria and measurement instructions.
  - The parts covered by this specification document are subject to Mini-Circuits standard limited warranty and terms and conditions (collectively, "Standard Terms"); Purchasers of this part are entitled to the rights and benefits contained therein. For a full statement of the standard. Terms and the exclusive rights and remedies thereunder, please visit Mini-Circuits' website at [www.minicircuits.com/MCLStore/terms.jsp](http://www.minicircuits.com/MCLStore/terms.jsp)