

Voltage Controlled Oscillator ROS-6030C-219R+

50Ω 5890 to 6010 MHz

The Big Deal:

- Low Phase Noise
- Linear Tuning
- Robust design and construction
- Small size .500" x .500" x .220"



CASE STYLE: CK1113

Product Overview:

The ROS-6030C-219R+ is a Voltage Controlled Oscillator, designed to operate from 5890 to 6010 MHz for point-to-point radio applications. The ROS-6030C-219R+ is packaged in a metal case (size of .500" x .500" x .220") to shield against unwanted signals and noise.

Key Features

Feature	Advantages
Linear Tuning Sensitivity Ratio: 1.15:1 typ.	Optimal for loop filter design.
Low Phase Noise: -102 dBc/Hz typ at 10kHz offset	Low phase noise improves system EVM (Error Vector Magnitude).
Good Pulling, 2 MHz typ.	Improves immunity against changes in output load.
Good Pushing, 1.4 MHz/V typ.	Provides increased immunity against noisy DC lines and improves output frequency stability vs. variations in supply voltage.
Small size, .500" x .500" x .220"	The small size enables the ROS-6030C-219R+ to be used in compact designs.

Voltage Controlled Oscillator

ROS-6030C-219R+

Frequency Doubling 5890 to 6010 MHz



CASE STYLE: CK1113

Features

- frequency based on multiplication of carrier frequency
- low phase noise, -102 dBc/Hz typ. @ 10kHz offset
- linear tuning characteristics
- low pulling, 2 MHz typ.
- low pushing, 1.4 MHz/V typ.
- aqueous washable

Applications

- wireless communications
- point-to-point radio

+RoHS Compliant
The +Suffix identifies RoHS Compliance. See our web site for RoHS Compliance methodologies and qualifications

Electrical Specifications

MODEL NO.	FREQ. (MHz)		POWER OUTPUT (dBm)	PHASE NOISE dBc/Hz SSB at offset frequencies, kHz				TUNING					NON HARMONIC SPURIOUS (dBc)	HARMONICS (dBc)			PULLING pk-pk @12 dB (MHz)	PUSHING (MHz/V)	DC OPERATING POWER			
	F2x (1/2F)			Typ.				VOLTAGE RANGE (V)	SENSI- TIVITY (MHz/V)	PORT CAP (pF)	3 dB MODULATION BANDWIDTH (MHz)	Max.		F0.5	F1.5	F2			Typ.	Typ.	Vcc (volts)	Current (mA)
	Min.	Max.		1	10	100	1000															
ROS-6030C-219R+	5890	6010	+3.5	-73	-102	-124	-144	0.5	5	63 - 73	12	140	-90	-27	-25	-22	2	1.4	5	28		

Pin Connections

RF OUT	10
VCC	14
V-TUNE	2
GROUND	1,3,4,5,6,7,8,9,11,12,13,15,16

Maximum Ratings

Operating Temperature	-55°C to 85°C
Storage Temperature	-55°C to 100°C
Absolute Max. Supply Voltage (Vcc)	7V
Absolute Max. Tuning Voltage (Vtune)	7V
All specifications	50 ohm system

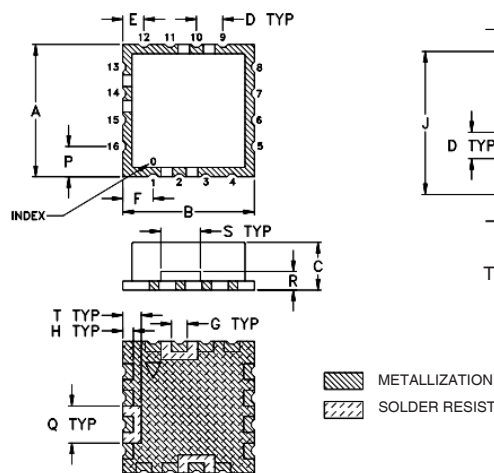
Permanent damage may occur if any of these limits are exceeded.

Tape & Reel: F37

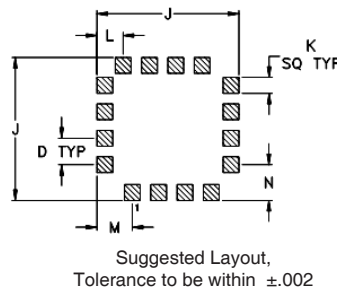
7" Reels with 10, 20, 50, 100 devices
13" Reels with 200, 500 devices

Environmental Ratings: ENV65

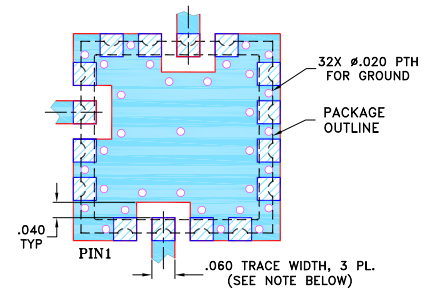
Outline Drawing



PCB Land Pattern



Demo Board MCL P/N: TB-10 Suggested PCB Layout (PL-012)



NOTES:

1. TRACE WIDTH IS SHOWN FOR FR4 WITH DIELECTRIC THICKNESS .030" ± .002"; COPPER: 1/2 OZ. EACH SIDE. FOR OTHER MATERIALS TRACE WIDTH MAY NEED TO BE MODIFIED.
 2. BOTTOM SIDE OF THE BOTTOM IS CONTINUOUS GROUND PLANE.
- DENOTES PCB COPPER LAYOUT WITH SMOBC (SOLDER MASK OVER BARE COPPER)
 DENOTES COPPER LAND PATTERN FREE OF SOLDER MASK

Outline Dimensions (inch/mm)

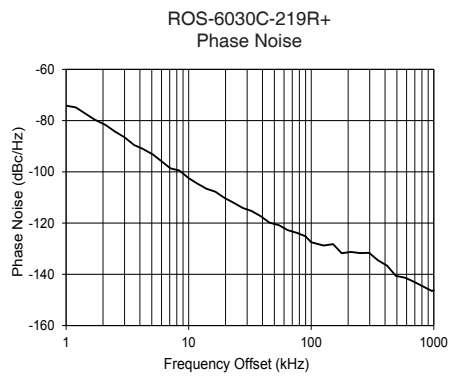
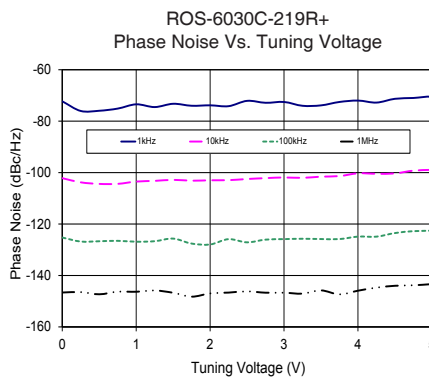
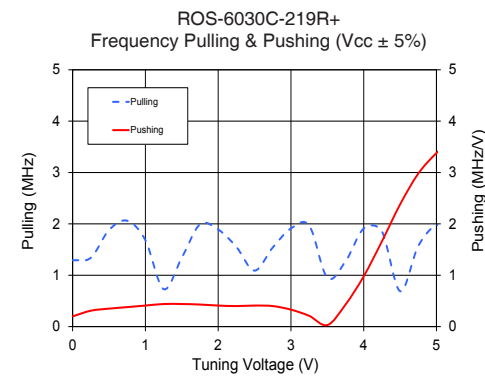
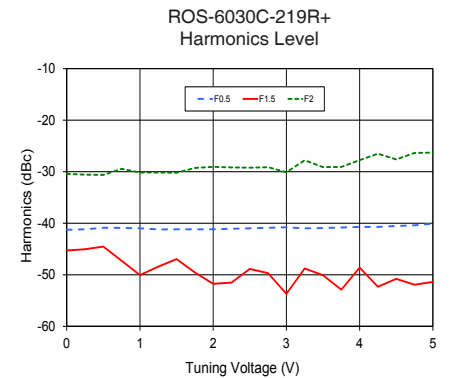
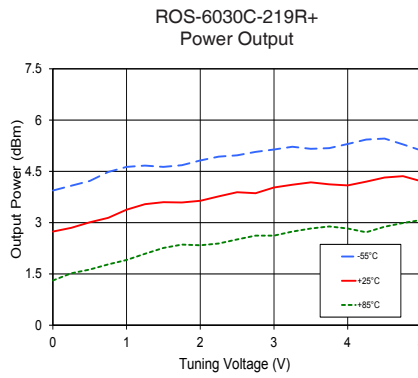
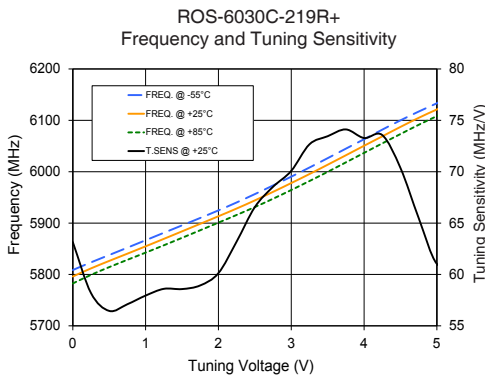
A	B	C	D	E	F	G	H	J	K	L	M	N	P	Q	R	S	T	wt.
.500	.500	.220	.100	.080	.115	.060	.040	.540	.060	.100	.135	.135	.115	.140	.070	.150	.070	grams
12.70	12.70	5.59	2.54	2.03	2.92	1.52	1.02	13.72	1.52	2.54	3.43	3.43	2.92	3.56	1.78	3.81	1.78	1.2

Performance Data & Curves*

ROS-6030C-219R+

V TUNE	TUNE SENS (MHz/V)	FREQUENCY (MHz)			POWER OUTPUT (dBm)			I _{cc} (mA)	HARMONICS (dBc)			FREQ. PUSH (MHz/V)	FREQ. PULL (MHz)	PHASE NOISE (dBc/Hz) at offsets				FREQ OFFSET (kHz)	PHASE NOISE at 5950 MHz (dBc/Hz)
		-55°C	+25°C	+85°C	-55°C	+25°C	+85°C		F0.5	F1.5	F2			1kHz	10kHz	100kHz	1MHz		
0.00	63.16	5808.7	5796.1	5782.6	3.94	2.74	1.31	17.95	-41.3	-45.3	-30.4	0.20	1.29	-72.28	-102.2	-125.2	-146.6	1.0	-74.17
0.50	56.46	5837.9	5826.4	5814.3	4.22	3.01	1.63	18.10	-40.9	-44.5	-30.6	0.35	1.88	-75.96	-104.4	-126.7	-147.3	2.5	-84.23
0.75	57.11	5852.2	5840.5	5828.6	4.48	3.14	1.78	18.15	-40.9	-47.3	-29.4	0.38	2.06	-75.11	-104.4	-126.5	-146.3	3.6	-89.58
1.00	57.95	5866.7	5854.8	5842.6	4.63	3.38	1.91	18.18	-41.0	-50.1	-30.2	0.41	1.68	-73.45	-103.5	-126.9	-146.3	6.0	-95.84
1.25	58.60	5881.1	5869.3	5856.8	4.67	3.54	2.09	18.22	-41.2	-48.4	-30.2	0.44	0.73	-74.52	-103.2	-126.7	-145.8	8.4	-99.49
1.50	58.58	5895.6	5883.9	5871.3	4.63	3.60	2.26	18.26	-41.2	-47.0	-30.2	0.44	1.34	-73.24	-102.8	-125.7	-146.7	10.0	-102.45
1.75	58.93	5910.0	5898.6	5886.1	4.68	3.59	2.36	18.32	-41.2	-49.6	-29.3	0.43	1.99	-74.01	-103.1	-127.6	-148.2	23.1	-111.98
2.00	60.13	5924.7	5913.3	5900.9	4.82	3.64	2.34	18.37	-41.2	-51.8	-29.1	0.41	1.89	-73.84	-103.0	-127.9	-147.0	38.8	-117.33
2.25	63.20	5940.2	5928.3	5915.9	4.93	3.77	2.39	18.41	-41.1	-51.5	-29.2	0.40	1.55	-74.17	-102.9	-125.9	-146.7	64.0	-122.73
2.50	66.55	5956.4	5944.1	5931.3	4.97	3.89	2.51	18.43	-41.0	-48.9	-29.2	0.41	1.09	-72.10	-102.5	-127.1	-146.2	89.8	-125.15
2.75	68.53	5973.2	5960.8	5947.4	5.07	3.86	2.62	18.45	-40.9	-49.7	-29.1	0.40	1.54	-72.85	-102.1	-126.1	-146.7	100.0	-127.47
3.00	70.08	5990.4	5977.9	5964.4	5.14	4.03	2.62	18.49	-40.8	-53.7	-30.1	0.33	1.91	-72.54	-101.9	-125.9	-146.7	150.8	-128.23
3.25	72.66	6008.2	5995.4	5981.9	5.22	4.11	2.74	18.51	-41.0	-48.8	-27.8	0.21	1.97	-74.02	-102.0	-125.7	-147.1	177.0	-131.77
3.50	73.45	6026.4	6013.6	5999.8	5.16	4.18	2.83	18.53	-40.9	-50.1	-29.1	0.03	0.95	-73.86	-101.6	-125.8	-145.8	211.6	-131.26
3.75	74.11	6044.9	6032.0	6018.2	5.18	4.12	2.89	18.56	-40.8	-52.9	-29.1	0.43	1.27	-72.53	-101.3	-125.8	-147.3	297.1	-131.63
4.00	73.28	6063.2	6050.5	6036.7	5.30	4.09	2.83	18.57	-40.7	-48.6	-27.8	0.98	1.91	-71.99	-100.3	-124.9	-145.9	348.8	-134.47
4.25	73.57	6081.9	6068.8	6055.2	5.43	4.20	2.72	18.57	-40.7	-52.3	-26.5	1.66	1.85	-72.77	-100.4	-124.9	-144.7	489.7	-140.60
4.50	70.36	6100.0	6087.2	6073.4	5.46	4.32	2.88	18.57	-40.5	-50.8	-27.6	2.38	0.69	-71.30	-100.3	-123.5	-144.0	585.4	-141.36
4.75	65.49	6117.1	6104.8	6091.3	5.29	4.36	2.99	18.58	-40.4	-51.9	-26.4	2.98	1.57	-70.98	-99.2	-122.8	-143.8	964.9	-146.49
5.00	61.03	6133.2	6121.2	6108.2	5.11	4.21	3.08	18.58	-40.1	-51.4	-26.3	3.38	1.97	-70.49	-98.9	-122.5	-143.4	1000.0	-146.24

*at 25°C unless mentioned otherwise



Additional Notes

- Performance and quality attributes and conditions not expressly stated in this specification document are intended to be excluded and do not form a part of this specification document.
- Electrical specifications and performance data contained in this specification document are based on Mini-Circuit's applicable established test performance criteria and measurement instructions.
- The parts covered by this specification document are subject to Mini-Circuits standard limited warranty and terms and conditions (collectively, "Standard Terms"); Purchasers of this part are entitled to the rights and benefits contained therein. For a full statement of the Standard Terms and the exclusive rights and remedies thereunder, please visit Mini-Circuits' website at www.minicircuits.com/MCLStore/terms.jsp

