

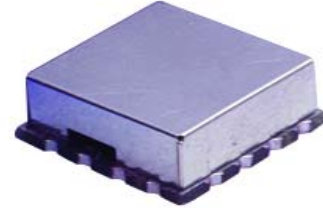
Engineering Development Model

Voltage Controlled Oscillator

ROS-EDR5498

Important Note

This model has been designed, built and tested in our engineering department. Performance data represents model capability. At present it is a non-catalog model. On request, we can supply a final specification sheet, part number and price/delivery information.



Please click "Back", and then click "Contact Us" for Applications support.

CASE STYLE : CK605

ELECTRICAL SPECIFICATIONS 50Ω				
Parameter	Min.	Typ.	Max.	Units
Frequency	1520		2668	MHz
Tuning Voltage	1		20	V
Power Output		+7		dBm
Phase Noise				
at 1 kHz offset		-61		dBc/Hz
at 10 KHz offset		-90		dBc/Hz
at 100 KHz offset		-111		dBc/Hz
at 1000 kHz offset		-135		dBc/Hz
Pulling at 12 dBr PK-PK all phases		31		MHz
Pushing at Vcc=5V±0.25V		4		MHz/V
Tuning Sensitivity		35.5 - 101		MHz/V
Harmonic Suppression		-25	-8	dBc
3 dB Modulation Bandwidth		7700		kHz
Supply Voltage		8		V
Supply Current			30	mA

MAXIMUM RATINGS	
Operating Temperature	-55°C to 85°C
Storage Temperature	-55°C to 100°C
Absolute Supply Voltage (Vcc)	+10V
Absolute Tuning Voltage (Vtune)	+22V

PIN CONNECTIONS	
RF OUT	10
VCC	14
V-TUNE	2
GROUND	1,3,4,5,6,7,8,9,11,12,13,15,16