

SMB Termination

50Ω

DC to 6000 MHz

ROSE-50+



CASE STYLE: LL604

Connectors Model
SMB-FEM ROSE-50+

+RoHS Compliant

The +Suffix identifies RoHS Compliance. See our web site for RoHS Compliance methodologies and qualifications

Maximum Ratings

Operating Temperature -55°C to 100°C

Storage Temperature -55°C to 100°C

Permanent damage may occur if any of these limits are exceeded.

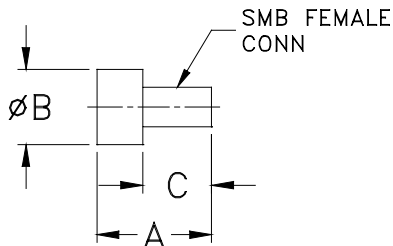
Features

- SMB connector with female center contact
- wideband, DC to 6000 MHz
- rugged construction

Applications

- cellular communications
- test set-up
- instrumentation
- PCS

Outline Drawing



Outline Dimensions (inch/mm)

A	B	D	wt
0.55	0.36	0.33	grams
13.97	9.14	8.38	4.0

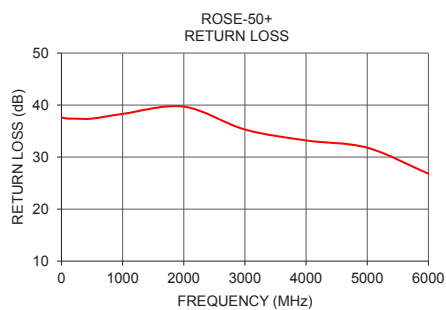
Electrical Specifications

FREQUENCY (MHz)	IMPEDANCE (OHMS)	RETURN LOSS (dB) MIN.			POWER RATING* (W)
		DC-2 GHz	DC-4 GHz	DC-6 GHz	
DC-6000	50	30	23	20	0.50

*At 70°C, derate linearly at 0.005W/°C to .35W at 100°C.

Typical Performance Data

Frequency (MHz)	Return Loss (dB)
10	37.6
100	37.4
200	37.4
500	37.4
1000	38.3
2000	39.7
3000	35.3
4000	33.2
5000	31.8
6000	26.8



Notes

- A. Performance and quality attributes and conditions not expressly stated in this specification document are intended to be excluded and do not form a part of this specification document.
- B. Electrical specifications and performance data contained in this specification document are based on Mini-Circuit's applicable established test performance criteria and measurement instructions.
- C. The parts covered by this specification document are subject to Mini-Circuit's standard limited warranty and terms and conditions (collectively, "Standard Terms"); Purchasers of this part are entitled to the rights and benefits contained therein. For a full statement of the Standard Terms and the exclusive rights and remedies thereunder, please visit Mini-Circuit's website at www.minicircuits.com/MCLStore/terms.jsp

