

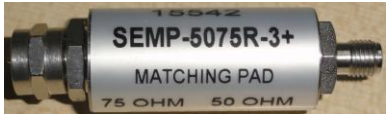
Engineering Development Model

Loss-less Impedance Matching Pad Coaxial

SEMP-EDU1957

Important Note

This model has been designed, built and tested in our engineering department. Performance data represents model capability. At present it is a non-catalog model. On request, we can supply a final specification sheet, part number and price/delivery information.



Please click "Back", and then click "Contact Us" for Applications support.

CASE STYLE : 99-01-1833

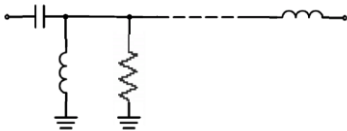
ELECTRICAL SPECIFICATIONS PRIMARY (50Ω) & SECONDARY (75Ω) @ +25°C

| Parameter | Min. | Typ. | Max. | Units |
|--------------------------------------|------|------|------|-------|
| Pass band Insertion loss @ 10 MHz | - | 6.00 | - | dB |
| Passband VSWR (50Ω) @ 10-2150 MHz | - | 1.20 | - | dB |
| Passband VSWR (75Ω) @ 10-2150 MHz | - | 1.30 | - | (:1) |

MAXIMUM RATINGS

| | |
|-----------------------|----------------|
| Operating Temperature | -55°C to 100°C |
| Storage Temperature | -55°C to 100°C |
| RF Power Input | 1 W |

Functional Schematic



PIN CONNECTIONS

| | |
|--------|------------------|
| Input | F Male (75Ω) |
| Output | SMA Female (50Ω) |