

Coaxial High Pass Filter

SHP-200+

50Ω 185 to 3000 MHz

Maximum Ratings

Operating Temperature	-55°C to 100°C
Storage Temperature	-55°C to 100°C
RF Power Input	0.5W max.

Permanent damage may occur if any of these limits are exceeded.

Features

- rugged shielded case
- other standard and custom SHP models available with wide selection of fco

Applications

- lab use
- transmitters/receivers
- radio communications



Generic photo used for illustration purposes only

CASE STYLE: FF99

Connectors	Model
SMA	SHP-200+

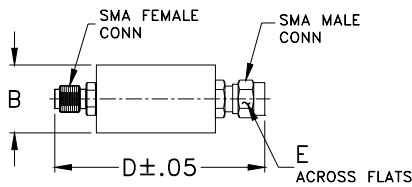
+RoHS Compliant

The +Suffix identifies RoHS Compliance. See our web site for RoHS Compliance methodologies and qualifications

High Pass Filter Electrical Specifications

STOPBAND (MHz)	fco (MHz) Nom.	PASSBAND (MHz)	VSWR (:1)	
			Stopband Typ.	Passband Typ.
(loss > 40 dB) DC-90	(loss > 20 dB) 90-116	(loss < 3 dB) 164	(loss < 1 dB) 185-3000	17 1.6

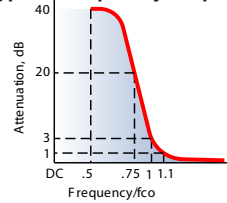
Outline Drawing



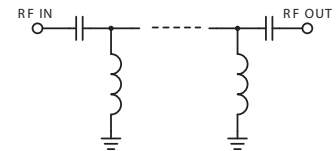
Outline Dimensions (inch/mm)

B	D	E	wt
.67	1.98	.312	grams
17.02	50.29	7.92	42.0

typical frequency response

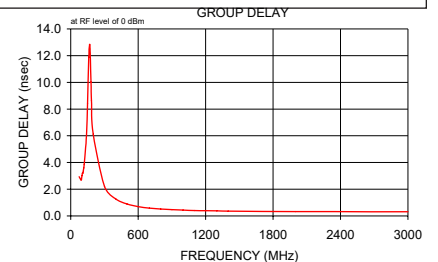
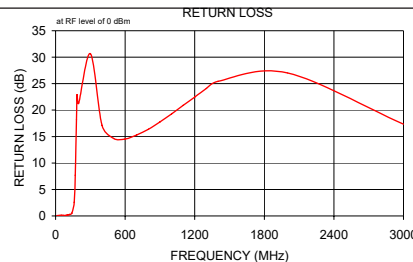
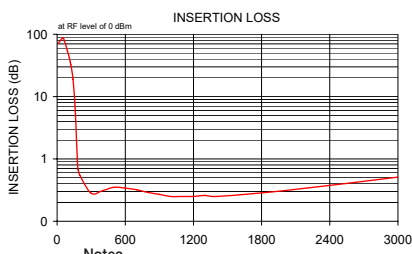


electrical schematic



Typical Performance Data

Frequency (MHz)	Insertion Loss (dB)	Return Loss (dB)	Frequency (MHz)	Group Delay (nsec)
	\bar{x}	σ		
10.00	71.62	2.72	75.00	2.93
50.00	87.09	4.73	90.00	2.71
70.00	73.00	0.87	95.00	2.71
75.00	68.35	1.20	100.00	3.03
90.00	55.00	0.48	104.00	3.20
95.00	50.91	0.53	108.00	3.21
100.00	47.05	0.54	112.00	3.36
108.00	41.12	0.52	116.00	3.60
116.00	35.41	0.54	120.00	3.87
120.00	32.62	0.56	140.00	6.03
140.00	18.90	0.65	150.00	8.41
160.00	5.88	0.58	160.00	11.87
170.00	1.99	0.26	170.00	12.82
180.00	0.82	0.06	180.00	10.02
185.00	0.68	0.03	185.00	8.64
200.00	0.55	0.03	200.00	6.12
300.00	0.28	0.02	300.00	2.20
400.00	0.31	0.01	400.00	1.28
500.00	0.35	0.01	500.00	0.90
600.00	0.34	0.01	600.00	0.70
700.00	0.32	0.01	700.00	0.59
800.00	0.29	0.01	800.00	0.52
900.00	0.27	0.01	900.00	0.47
1000.00	0.25	0.01	1000.00	0.44
1100.00	0.25	0.01	1100.00	0.41
1200.00	0.25	0.01	1200.00	0.39
1300.00	0.26	0.01	1300.00	0.38
1400.00	0.25	0.01	1400.00	0.36
2000.00	0.31	0.01	2000.00	0.33
3000.00	0.51	0.02	3000.00	0.32



Notes

- Performance and quality attributes and conditions not expressly stated in this specification document are intended to be excluded and do not form a part of this specification document.
- Electrical specifications and performance data contained in this specification document are based on Mini-Circuit's applicable established test performance criteria and measurement instructions.
- The parts covered by this specification document are subject to Mini-Circuits standard limited warranty and terms and conditions (collectively, "Standard Terms"); Purchasers of this part are entitled to the rights and benefits contained therein. For a full statement of the Standard Terms and the exclusive rights and remedies thereunder, please visit Mini-Circuits' website at www.minicircuits.com/MCLStore/terms.jsp

