

Coaxial High Pass Filter

50Ω 600 to 3000 MHz

SHP-600+



Generic photo used for illustration purposes only

CASE STYLE: FF99

Connectors	Model
SMA	SHP-600+

+RoHS Compliant

The +Suffix identifies RoHS Compliance. See our web site for RoHS Compliance methodologies and qualifications

Maximum Ratings

Operating Temperature	-55°C to 100°C
Storage Temperature	-55°C to 100°C
RF Power Input	0.5W max.

Permanent damage may occur if any of these limits are exceeded.

Features

- rugged shielded case
- other standard and custom SHP models available with wide selection of fco

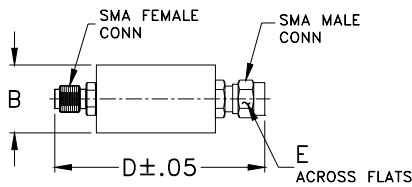
Applications

- lab use
- transmitters/receivers
- radio communications

High Pass Filter Electrical Specifications

STOPBAND (MHz)		fco (MHz) Nom.	PASSBAND (MHz)	VSWR (:1)	
(loss > 40 dB)	(loss > 20 dB)	(loss 3 dB)	(loss < 1 dB)	Stopband Typ.	Passband Typ.
DC-350	350-440	545	600-3000	17	2.0

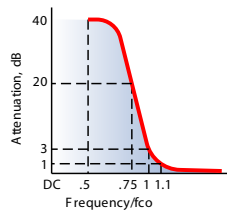
Outline Drawing



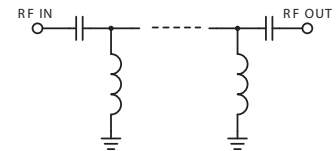
Outline Dimensions (inch/mm)

B	D	E	wt
.67	1.98	.312	grams
17.02	50.29	7.92	42.0

typical frequency response

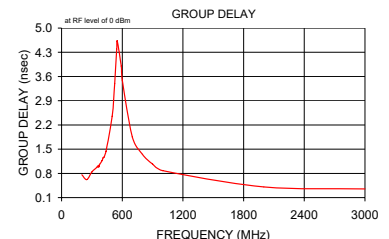
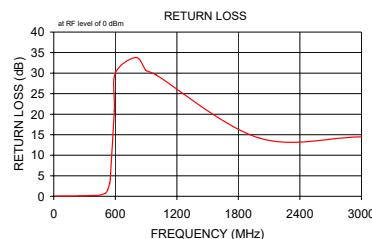
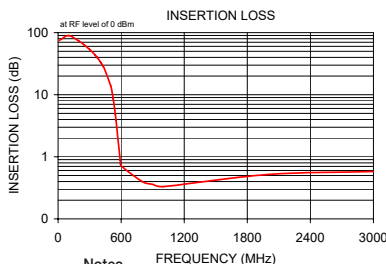


electrical schematic



Typical Performance Data

Frequency (MHz)	Insertion Loss (dB)	Return Loss (dB)	Frequency (MHz)	Group Delay (nsec)
	\bar{x}	σ		
10.00	74.47	4.27	200.00	0.76
100.00	89.80	7.14	250.00	0.62
200.00	72.58	0.82	300.00	0.84
250.00	63.01	0.88	350.00	0.98
300.00	53.56	0.81	360.00	1.01
350.00	44.05	0.88	362.00	1.02
360.00	42.15	0.91	364.00	0.99
364.00	41.37	0.91	366.00	1.00
366.00	40.99	0.91	368.00	1.00
368.00	40.60	0.92	370.00	0.99
370.00	40.22	0.92	372.00	1.02
372.00	39.82	0.92	374.00	1.05
374.00	39.45	0.93	376.00	1.06
376.00	39.06	0.93	400.00	1.17
400.00	34.36	0.98	410.00	1.25
410.00	32.39	1.00	420.00	1.27
420.00	30.45	1.01	430.00	1.35
430.00	28.45	1.04	440.00	1.44
440.00	26.44	1.06	500.00	2.45
500.00	13.91	1.14	525.00	3.40
525.00	8.60	1.05	545.00	4.39
545.00	4.82	0.82	551.00	4.63
551.00	3.88	0.72	590.00	3.90
590.00	0.89	0.15	600.00	3.49
600.00	0.72	0.07	700.00	1.85
800.00	0.40	0.03	800.00	1.35
900.00	0.36	0.03	900.00	1.07
1000.00	0.33	0.01	1000.00	0.88
2000.00	0.52	0.05	2000.00	0.41
3000.00	0.58	0.05	3000.00	0.35



Notes

- Performance and quality attributes and conditions not expressly stated in this specification document are intended to be excluded and do not form a part of this specification document.
- Electrical specifications and performance data contained in this specification document are based on Mini-Circuit's applicable established test performance criteria and measurement instructions.
- The parts covered by this specification document are subject to Mini-Circuits standard limited warranty and terms and conditions (collectively, "Standard Terms"); Purchasers of this part are entitled to the rights and benefits contained therein. For a full statement of the Standard Terms and the exclusive rights and remedies thereunder, please visit Mini-Circuits' website at www.minicircuits.com/MCLStore/terms.jsp

