

Coaxial High Pass Filter

SHP-800+

50Ω 780 to 3000 MHz



Generic photo used for illustration purposes only

CASE STYLE: FF99

Connectors Model
SMA SHP-800+

+RoHS Compliant

The +Suffix identifies RoHS Compliance. See our web site for RoHS Compliance methodologies and qualifications

Maximum Ratings

Operating Temperature	-55°C to 100°C
Storage Temperature	-55°C to 100°C
RF Power Input	0.5W max.

Permanent damage may occur if any of these limits are exceeded.

Features

- rugged shielded case
- other standard and custom SHP models available with wide selection of fco

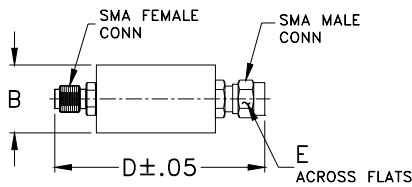
Applications

- lab use
- transmitters/receivers
- radio communications

High Pass Filter Electrical Specifications

STOPBAND (MHz)	fco (MHz) Nom.	PASSBAND (MHz)	VSWR (:1)
(loss > 40 dB)	(loss > 20 dB)	(loss < 3 dB)	Stopband Typ. Passband Typ.
DC-445	445-570	710	17 2.1

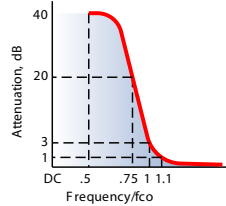
Outline Drawing



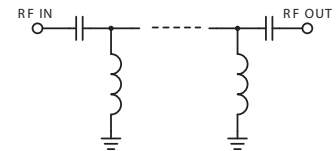
Outline Dimensions (inch/mm)

B	D	E	wt
.67	1.98	.312	grams
17.02	50.29	7.92	42.0

typical frequency response

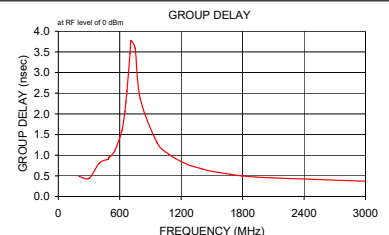
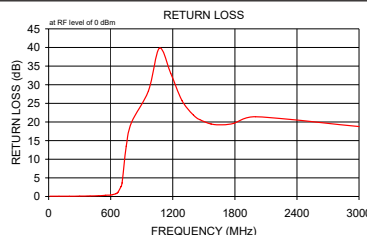
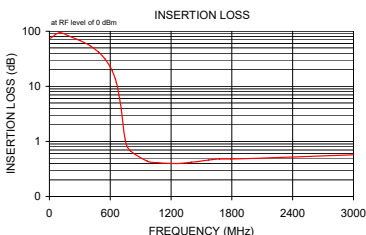


electrical schematic



Typical Performance Data

Frequency (MHz)	Insertion Loss (dB)	Return Loss (dB)	Frequency (MHz)	Group Delay (nsec)
	\bar{x}	σ		
10.00	74.59	6.84	200.00	0.49
100.00	94.26	7.80	300.00	0.44
200.00	80.68	1.20	400.00	0.81
300.00	68.07	0.23	485.00	0.90
400.00	54.92	0.50	490.00	0.92
485.00	41.80	0.71	495.00	0.95
490.00	41.00	0.71	500.00	0.95
495.00	40.19	0.72	550.00	1.10
500.00	39.38	0.73	600.00	1.42
550.00	31.17	0.81	610.00	1.50
600.00	22.58	0.88	620.00	1.59
620.00	19.06	0.91	625.00	1.64
650.00	13.62	0.95	650.00	2.05
660.00	11.79	0.95	660.00	2.29
670.00	9.98	0.94	670.00	2.55
700.00	5.03	0.77	700.00	3.46
710.00	3.71	0.66	710.00	3.77
750.00	1.03	0.15	750.00	3.59
800.00	0.67	0.03	800.00	2.37
965.00	0.44	0.01	965.00	1.30
1070.00	0.41	0.00	1070.00	1.04
1180.00	0.40	0.00	1180.00	0.87
1290.00	0.40	0.01	1290.00	0.75
1400.00	0.42	0.02	1400.00	0.67
1460.00	0.43	0.02	1460.00	0.63
1570.00	0.46	0.03	1570.00	0.58
1680.00	0.48	0.03	1680.00	0.54
1790.00	0.48	0.04	1790.00	0.50
2000.00	0.49	0.04	2000.00	0.46
3000.00	0.57	0.03	3000.00	0.37



Notes

- Performance and quality attributes and conditions not expressly stated in this specification document are intended to be excluded and do not form a part of this specification document.
- Electrical specifications and performance data contained in this specification document are based on Mini-Circuit's applicable established test performance criteria and measurement instructions.
- The parts covered by this specification document are subject to Mini-Circuits standard limited warranty and terms and conditions (collectively, "Standard Terms"); Purchasers of this part are entitled to the rights and benefits contained therein. For a full statement of the Standard Terms and the exclusive rights and remedies thereunder, please visit Mini-Circuits' website at www.minicircuits.com/MCLStore/terms.jsp

