

Band Pass Filter

SXBP-EDU2249/1

Surface Mount

Important Note

This model has been designed, built and tested in our engineering department. Performance data represents model capability. At present it is a non-catalog model. On request, we can supply a final specification sheet, part number and price/delivery information.



Please click "Back", and then click "Contact Us" for Applications support.

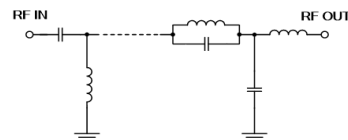
HF1139

ELECTRICAL SPECIFICATIONS 75Ω @ +25°C

Parameter	Min.	Typ.	Max.	Units
Passband (Loss < 2 dB)	5		204	MHz
Centre frequency		104		MHz
Low Band (Loss > 20 dB)	0.3	1		MHz
High Band (Loss > 20 dB)		258	280	MHz
High Band (Loss > 40 dB)		280	1000	MHz
Passband VSWR		1.2	1.57	(:1)
Stopband VSWR		20		(:1)

Functional Schematic

MAXIMUM RATINGS	
Operating Temperature	-40°C to 85°C
Storage Temperature	-55°C to 100°C
RF Power Input	0.25W



PIN CONNECTIONS

Input	1
Output	8
Ground	2,3,4,5,6,7