

Engineering Development Model

Low Pass Filter

SXLP-EDU0934

Surface Mount

Important Note

This model has been designed, built and tested in our engineering department. Performance data represents model capability. At present it is a non-catalog model. On request, we can supply a final specification sheet, part number and price/delivery information.



Please click "Back", and then click "Contact Us" for Applications support.

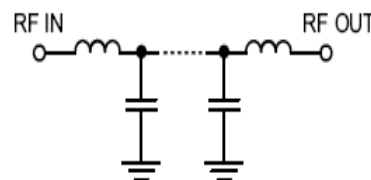
CASE STYLE : HF1139

ELECTRICAL SPECIFICATIONS 50Ω @ +25°C

Parameter	Min.	Typ.	Max.	Units
Passband (Loss < 1 dB)	DC		29	MHz
Insertion loss 3dB		32.5		MHz
Stopband (Loss > 20 dB)	38		41	MHz
(Loss > 40 dB)	41		525	MHz
Passband VSWR		1.2		(:1)
Stopband VSWR		20		(:1)

Functional Schematic

MAXIMUM RATINGS	
Operating Temperature	-40°C to 85°C
Storage Temperature	-55°C to 100°C
RF Power Input	0.5 W



PIN CONNECTIONS

Input	1
Output	8
Not Connected	-
Case Ground	2,3,4,5,6,7



P.O. Box 350166, Brooklyn, New York 11235-0003 (718) 934-4500 Fax (718) 332-4661 For detailed performance specs & shopping online see Mini-Circuits web site



The Design Engineers Search Engine Provides ACTUAL Data Instantly From MINI-CIRCUITS At: www.minicircuits.com

RF/IF MICROWAVE COMPONENTS



REV. X1
SXLP-EDU0934
URJ
080405
Page 1 of 1