

Engineering Development Model

Power Splitter/Combiner

TCP-ED8262/3

2 Way-0°

Important Note

This model has been designed, built and tested in our engineering department. Performance data represents model capability. At present it is a non-catalog model. On request, we can supply a final specification sheet, part number and price/delivery information.

Please click "Back", and then click "Contact Us" for Applications support.



CASE STYLE : DB714

ELECTRICAL SPECIFICATIONS 75Ω @ +25°C				
Parameter		Min.	Typ.	Max. Units
Frequency		3		1500 MHz
Isolation	3 - 30 MHz		25	dB
	30 - 750 MHz		29	dB
	750 - 1500 MHz		23	dB
Total Loss Above 3.0 dB	3 - 30 MHz		0.31	dB
	30 - 750 MHz		0.31	dB
	750 - 1500 MHz		0.76	dB
Amplitude Unbalance	3 - 30 MHz		0.365	dB
	30 - 750 MHz		0.123	dB
	750 - 1500 MHz		0.096	dB
VSWR	SUM Port		1.16	(:1)
	OUT Ports		1.25	(:1)

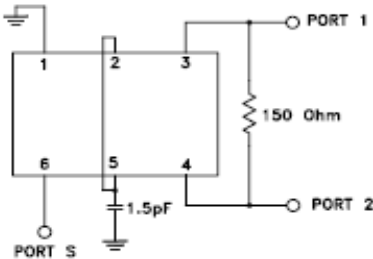
Note: Denotes 75 Ohm model, for coax connector models 75 Ohm BNC connectors are standard.

MAXIMUM RATINGS	
Operating Temperature	-40°C to 85°C
Storage Temperature	-55°C to 100°C

PIN CONNECTIONS	
SUM PORT	6
PORT 1	3
PORT 2	4
GROUND	1
CONNECT	2, 5
EXT. RESISTOR 150Ω	3, 4
EXT. CAPACITOR 1.5pF	2 OR 5 TO GND

Functional Diagram

electrical schematic



Notes

- A. Performance and quality attributes and conditions not expressly stated in this specification document are intended to be excluded and do not form a part of this specification document.
- B. Electrical specifications and performance data contained in this specification document are based on Mini-Circuit's applicable established test performance criteria and measurement instructions.
- C. The parts covered by this specification document are subject to Mini-Circuits standard limited warranty and terms and conditions (collectively, "Standard Terms"). Purchasers of this part are entitled to the rights and benefits contained therein. For a full statement of the Standard Terms and the exclusive rights and remedies thereunder, please visit Mini-Circuits' website at www.minicircuits.com/MCStore/terms.jsp

