

Surface Mount Attenuator/Switch

50Ω Bi-Phase 10 to 1000 MHz

TFAS-2+ TFAS-2



Generic photo used for illustration purposes only

CASE STYLE: B02

+RoHS Compliant

The +Suffix identifies RoHS Compliance. See our web site for RoHS Compliance methodologies and qualifications

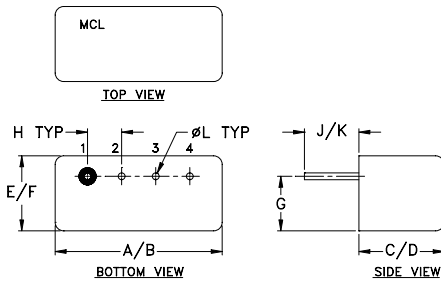
Maximum Ratings

Operating Temperature	-55°C to 100°C
Storage Temperature	-55°C to 100°C
Control Current	30mA
Permanent damage may occur if any of these limits are exceeded.	

Pin Connections

INPUT	1
OUTPUT	4
CONTROL	2
GROUND	3
CASE GROUND	3

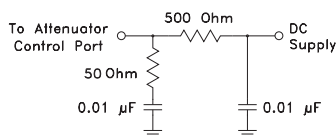
Outline Drawing



Outline Dimensions (inch/mm)

A	B	C	D	E	F
.480	.500	.240	.255	.210	.230
12.19	12.70	6.10	6.48	5.33	5.84
G	H	J	K	L	wt
.16	.100	.14	.20	.020	grams
4.06	2.54	3.56	5.08	0.51	1.9

suggested control port biasing configuration



Features

- wideband, 10 to 1000 MHz
- high in-out isolation

Applications

- bi-phase modulator

Attenuator/Switch Electrical Specifications

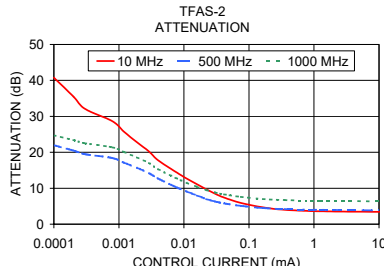
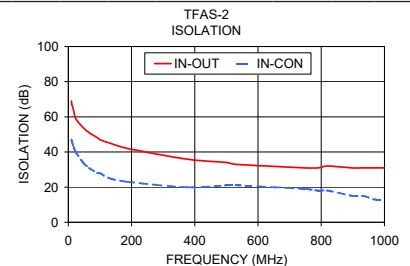
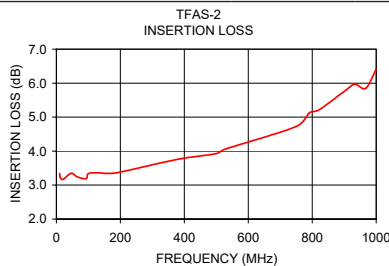
FREQUENCY (MHz)	INSERTION LOSS (dB) ±20 mA	MAX. INPUT PWR (dBm) ±20 mA	IN-OUT ISOLATION (dB) 0 mA			BI-PHASE X̄ (±20 mA) Typ.						
			L	M	U	Δ AMP (dB)	Phase (deg.) deviation from 180°					
10-1000	DC-0.5	17* 25	50	30	42	20	31	20	0.1	0.2	2.0	3.0

L = low range [f_L to $10 f_L$] M = mid range [$10 f_L$ to $f_U/2$] U = upper range [$f_U/2$ to f_U] m = [$2 f_L$ to $f_U/2$]
 * 13 dBm from 10-500 MHz.

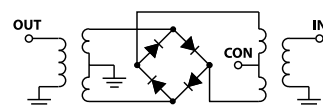
Performance specifications apply for input power up to 10 dB below stated 1 dB compression.

Typical Performance Data

Freq. (MHz)	I. Loss (dB) at 20mA	±Control ΔAMP (dB)	20mA ΔPhase (deg.)	Isolation (in-out) (in-con)		Input R. Loss (dB)	Control Current (mA)	Attenuation (dB)			Phase Δ ref at 15mA Ctrl deg.			Input VSWR			
				10 MHz	500 MHz			1000 MHz	10 MHz	500 MHz	1000 MHz	10 MHz	500 MHz	1000 MHz			
10.0	3.34	0.009	0.00	180.0	69	47	11.4	0.0000	51.3	24.7	27.2	76.7	40.6	0.5	3.3	2.3	4.2
11.4	3.24	0.006	0.01	180.0	67	46	11.6	0.0001	40.8	22.0	24.7	67.8	31.3	-6.7	3.2	2.2	4.0
16.1	3.17	0.004	0.01	180.1	64	43	12.2	0.0002	35.5	20.5	23.4	61.3	25.4	-10.4	3.2	2.2	3.8
23.2	3.18	0.003	0.00	180.1	59	40	12.5	0.0003	32.1	19.5	22.5	59.5	21.4	-12.8	3.1	2.1	3.7
46.5	3.35	0.002	0.01	180.3	54	34	12.5	0.0008	28.6	18.4	21.4	55.8	17.3	-14.7	3.0	2.0	3.6
65.8	3.24	0.002	0.01	180.5	51	31	12.4	0.0012	25.7	17.1	20.1	53.7	14.1	-15.8	2.9	1.9	3.4
93.1	3.19	0.030	0.01	180.7	48	28	12.4	0.0019	22.8	15.7	18.6	51.0	10.9	-16.0	2.7	1.9	3.2
100.2	3.34	0.003	0.01	180.7	47	28	12.4	0.0029	20.2	14.2	17.0	47.8	8.6	-15.1	2.6	1.7	3.1
131.8	3.36	0.004	0.01	180.9	45	25	12.4	0.0040	17.8	12.7	15.3	45.1	6.8	-13.6	2.4	1.6	2.9
186.6	3.36	0.005	0.02	181.3	42	23	12.3	0.0074	14.6	10.4	12.9	40.1	4.7	-10.7	2.1	1.5	2.7
373.8	3.75	0.008	0.02	182.1	36	20	11.4	0.0110	12.7	9.1	11.5	36.8	3.7	-8.7	1.9	1.4	2.6
500.8	3.93	0.015	0.03	182.5	34	21	11.3	0.0159	11.1	8.0	10.4	33.2	2.8	-7.2	1.7	1.4	2.6
529.1	4.06	0.018	0.04	182.5	33	21	11.2	0.0221	9.7	7.0	9.5	29.5	2.2	-5.3	1.5	1.4	2.5
748.8	4.72	0.055	0.10	182.6	31	19	10.7	0.0301	8.5	6.3	8.8	25.9	1.7	-4.3	1.3	1.4	2.6
791.0	5.13	0.050	0.15	182.8	31	18	10.3	0.0416	7.4	5.8	8.3	22.4	1.0	-3.4	1.2	1.5	2.6
820.5	5.21	0.052	0.15	182.4	32	18	10.1	0.0753	5.9	5.1	7.6	16.2	0.7	-2.1	1.2	1.6	2.6
899.0	5.75	0.063	0.20	182.4	31	15	9.5	0.1640	4.7	4.5	7.0	9.2	0.2	-1.4	1.4	1.8	2.7
932.5	5.97	0.089	0.27	182.0	31	15	9.3	0.3543	4.0	4.2	6.7	5.0	0.0	-0.8	1.6	1.9	2.7
967.2	5.85	0.077	0.24	181.8	31	13	9.1	1.2309	3.6	4.0	6.5	1.7	-0.1	-0.5	1.8	2.0	2.7
1000.0	6.41	0.111	0.38	181.4	31	13	8.8	15.1064	3.4	3.8	6.3	0.0	0.0	-0.1	1.9	2.0	2.7



electrical schematic



Notes

- Performance and quality attributes and conditions not expressly stated in this specification document are intended to be excluded and do not form a part of this specification document.
- Electrical specifications and performance data contained in this specification document are based on Mini-Circuit's applicable established test performance criteria and measurement instructions.
- The parts covered by this specification document are subject to Mini-Circuits standard limited warranty and terms and conditions (collectively, "Standard Terms"); Purchasers of this part are entitled to the rights and benefits contained therein. For a full statement of the Standard Terms and the exclusive rights and remedies thereunder, please visit Mini-Circuits' website at www.minicircuits.com/MCLStore/terms.jsp

