

Frequency Mixer

Level 17 (LO Power +17 dBm) 20 to 1500 MHz

TUF-5H+

Maximum Ratings

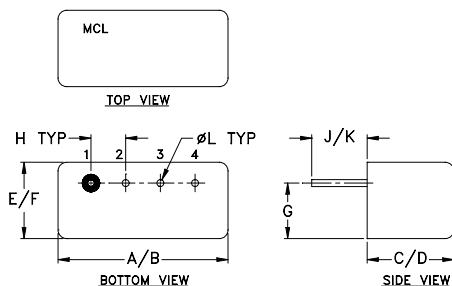
Operating Temperature	-55°C to 100°C
Storage Temperature	-55°C to 100°C
RF Power	200mW
IF Current	40mA

Permanent damage may occur if any of these limits are exceeded.

Pin Connections

LO	4
RF	1
IF	2
GROUND	3
CASE GROUND	3

Outline Drawing



Outline Dimensions (inch/mm)

A	B	C	D	E	F
.480	.500	.240	.255	.210	.230
12.19	12.70	6.10	6.48	5.33	5.84
G	H	J	K	L	wt
.16	.100	.14	.20	.020	grams
4.06	2.54	3.56	5.08	0.51	1.9

Features

- wideband, 20 to 1500 MHz
- low conversion loss, 7.5 dB typ.
- high L-R isolation, 50 dB typ.
- rugged welded construction

Applications

- satellite distribution
- cellular
- GSM/ISM



Generic photo used for illustration purposes only

CASE STYLE: B02

+RoHS Compliant

The +Suffix identifies RoHS Compliance. See our web site for RoHS Compliance methodologies and qualifications

Electrical Specifications

FREQUENCY (MHz)		CONVERSION LOSS (dB)				LO-RF ISOLATION (dB)						LO-IF ISOLATION (dB)						IP3 @ CENTER BAND (dBm)
LO/RF	IF	Mid-Band		Total Range	Max.	L		M		U		L		M		U		Typ.
		\overline{X}	σ			Typ.	Min.	Typ.	Min.	Typ.	Min.	Typ.	Min.	Typ.	Min.	Typ.	Min.	
20-1500	DC-1000	7.50	0.17	8.5	9.0	62	55	50	40	38	25	40	25	29	18	20	8	20

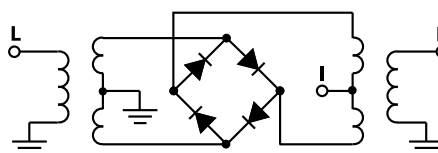
1 dB COMP.: +14 dBm typ.

L = low range [f_L to 10 f_L] M = mid range [10 f_L to f_U/2] U = upper range [f_U/2 to f_U]
m = mid band [2f_L to f_U/2]

Typical Performance Data

Frequency (MHz)		Conversion Loss (dB)	Isolation L-R (dB)	Isolation L-I (dB)	VSWR RF Port (:1)	VSWR LO Port (:1)
RF	LO	LO +17dBm	LO +17dBm	LO +17dBm	LO +17dBm	LO +17dBm
20.00	50.00	6.69	76.70	54.80	1.64	1.69
50.00	80.00	6.37	69.50	48.00	1.53	1.71
110.00	140.00	5.99	65.00	43.50	1.61	1.63
200.00	230.00	5.98	61.10	39.10	1.64	1.63
320.00	350.00	6.13	58.30	36.40	1.80	1.58
500.00	530.00	6.49	56.50	33.60	1.94	1.62
635.00	665.00	6.96	50.80	31.50	2.02	1.62
740.00	770.00	7.59	47.20	30.20	2.32	1.69
845.00	875.00	8.29	46.10	29.80	2.73	1.77
950.00	980.00	8.38	44.20	28.60	3.05	1.89
1000.00	1030.00	8.21	41.40	27.80	3.16	1.86
1055.00	1085.00	7.97	38.90	27.10	3.29	1.84
1100.00	1130.00	7.98	36.60	25.20	3.59	1.93
1200.00	1230.00	7.63	37.20	24.10	3.70	2.03
1250.00	1280.00	7.55	36.30	22.90	3.65	2.08
1300.00	1330.00	7.47	35.00	21.70	3.58	2.08
1350.00	1380.00	7.23	34.50	21.10	3.45	2.14
1400.00	1730.00	7.30	34.00	19.90	3.21	2.24
1470.00	1500.00	7.17	33.80	19.30	3.06	2.24
1500.00	1470.00	7.21	33.30	17.00	2.92	2.37

Electrical Schematic

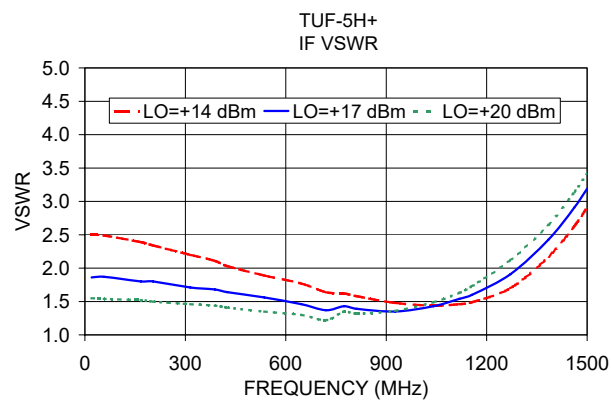
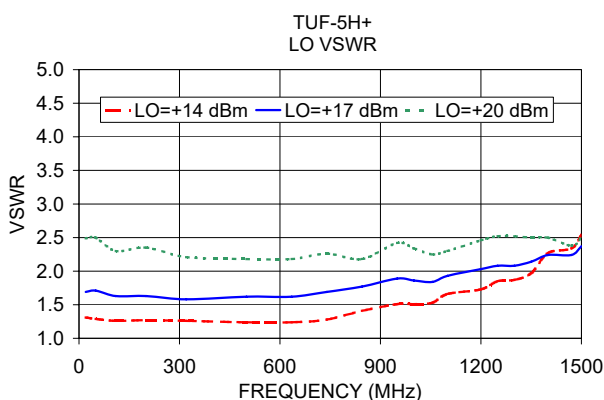
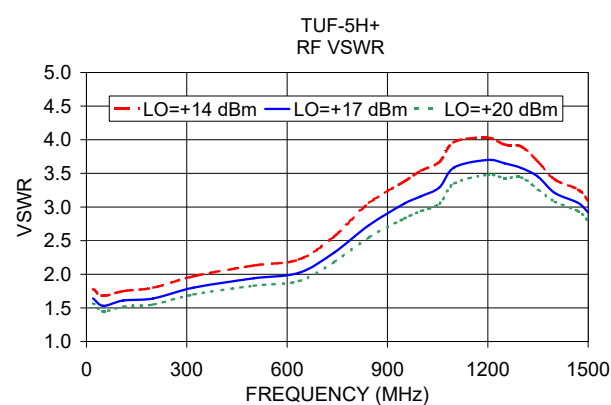
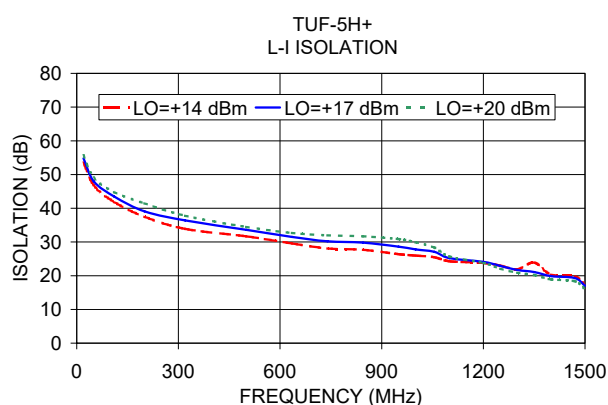
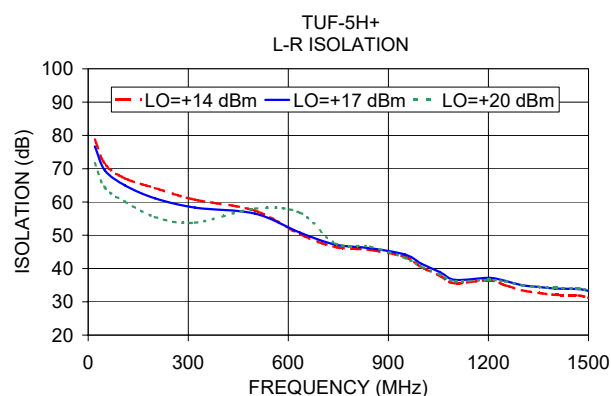
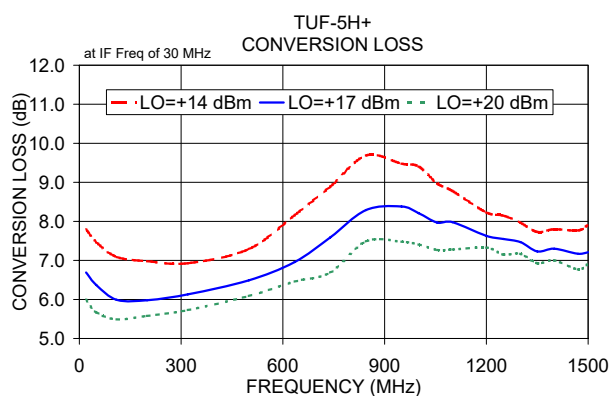


Notes

- A. Performance and quality attributes and conditions not expressly stated in this specification document are intended to be excluded and do not form a part of this specification document.
B. Electrical specifications and performance data contained in this specification document are based on Mini-Circuits' applicable established test performance criteria and measurement instructions.
C. The parts covered by this specification document are subject to Mini-Circuits standard limited warranty and terms and conditions (collectively, "Standard Terms"); Purchasers of this part are entitled to the rights and benefits contained therein. For a full statement of the Standard Terms and the exclusive rights and remedies thereunder, please visit Mini-Circuits' website at www.minicircuits.com/MCLStore/terms.jsp



www.minicircuits.com P.O. Box 350166, Brooklyn, NY 11235-0003 (718) 934-4500 sales@minicircuits.com



Notes

- Performance and quality attributes and conditions not expressly stated in this specification document are intended to be excluded and do not form a part of this specification document.
- Electrical specifications and performance data contained in this specification document are based on Mini-Circuit's applicable established test performance criteria and measurement instructions.
- The parts covered by this specification document are subject to Mini-Circuits standard limited warranty and terms and conditions (collectively, "Standard Terms"); Purchasers of this part are entitled to the rights and benefits contained therein. For a full statement of the Standard Terms and the exclusive rights and remedies thereunder, please visit Mini-Circuits' website at www.minicircuits.com/MCLStore/terms.jsp

