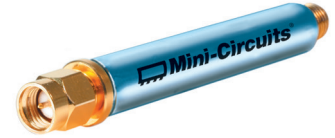


Low Pass Filter

VLFX-780+

50Ω DC to 780 MHz (40 dB Typ. Isolation up to 20 GHz)



Generic photo used for illustration purposes only
CASE STYLE: FF1118

Connectors Model
SMA VLFX-780+

Features

- Very good isolation, 40 dB typ. up to 20 GHz
- Excellent power handling, 10W
- Temperature stable LTCC internal structure
- Re-entry frequency > 20 GHz
- Protected by US patent 6,943,646
- Rugged unibody construction

Applications

- Harmonic rejection
- Transmitters/receivers
- Lab use
- Test instrumentation

Electrical Specifications⁽¹⁾ at 25°C

Parameter	F#	Frequency (MHz)	Min.	Typ.	Max.	Unit	
Pass Band	Insertion Loss	DC-F1	DC-780	—	1.1	1.6	dB
	Freq. Cut-Off	F2	950	—	3.0	—	dB
	VSWR	DC-F1	DC-780	—	1.25	—	:1
Stop Band	Insertion Loss	F3	1450	20	30	—	dB
		F4-F5	1600-20000	—	40	—	dB
	VSWR	F3-F5	1450-20000	—	10	—	:1

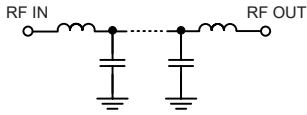
(1) In Application where DC voltage is present at either input or output ports, coupling capacitors are required.

Maximum Ratings

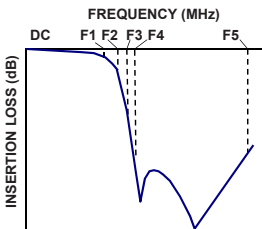
Operating Temperature	-55°C to 100°C
Storage Temperature	-55°C to 100°C
RF Power Input*	10W max.

*Passband rating, derate linearly to 3.5W at 100°C ambient.
Permanent damage may occur if any of these limits are exceeded.

Functional Schematic



Typical Frequency Response

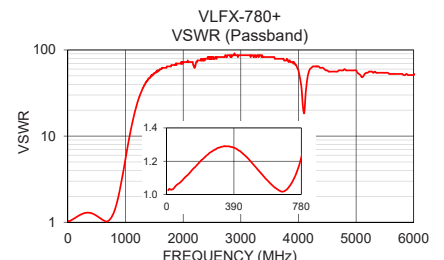
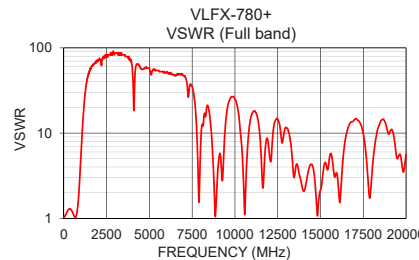
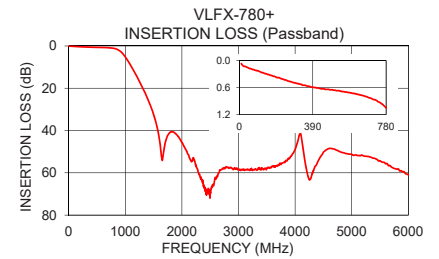
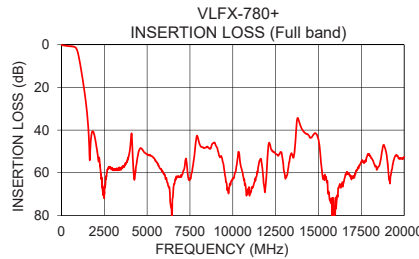


Typical Performance Data at 25°C

Frequency (MHz)	Insertion Loss (dB)	VSWR (:1)
10	0.07	1.03
250	0.44	1.25
500	0.66	1.18
780	1.05	1.22
950	3.47	3.54
1100	9.40	12.61
1320	20.52	38.61
1450	28.58	51.10
1480	30.79	52.65
1600	43.66	59.91
2500	69.17	82.73
5000	51.24	57.91
7500	62.46	35.46
10000	62.49	24.83
12500	51.16	14.62
15000	44.35	2.15
16000	71.63	2.95
17500	54.74	9.85
19000	53.13	9.74
20000	52.55	5.61

+RoHS Compliant

The +Suffix identifies RoHS Compliance. See our web site for RoHS Compliance methodologies and qualifications



Notes

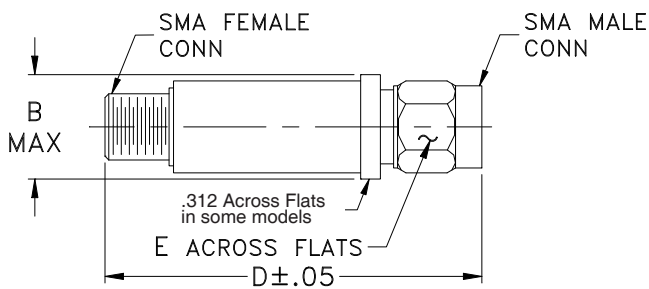
- Performance and quality attributes and conditions not expressly stated in this specification document are intended to be excluded and do not form a part of this specification document.
- Electrical specifications and performance data contained in this specification document are based on Mini-Circuit's applicable established test performance criteria and measurement instructions.
- The parts covered by this specification document are subject to Mini-Circuits standard limited warranty and terms and conditions (collectively, "Standard Terms"); Purchasers of this part are entitled to the rights and benefits contained therein. For a full statement of the Standard Terms and the exclusive rights and remedies thereunder, please visit Mini-Circuits' website at www.minicircuits.com/MCLStore/terms.jsp



Coaxial Connections

INPUT	SMA-Male
OUTPUT	SMA-Female

Outline Drawing



Outline Dimensions ($\frac{\text{inch}}{\text{mm}}$)

B	D	E	wt.
$\frac{\text{inch}}$	$\frac{\text{inch}}$	$\frac{\text{inch}}$	$\frac{\text{grams}}$
.410	2.67	.312	17.0
10.41	67.82	7.92	

Note: Please refer to case style drawing for details

Notes

- A. Performance and quality attributes and conditions not expressly stated in this specification document are intended to be excluded and do not form a part of this specification document.
- B. Electrical specifications and performance data contained in this specification document are based on Mini-Circuit's applicable established test performance criteria and measurement instructions.
- C. The parts covered by this specification document are subject to Mini-Circuits standard limited warranty and terms and conditions (collectively, "Standard Terms"); Purchasers of this part are entitled to the rights and benefits contained therein. For a full statement of the Standard Terms and the exclusive rights and remedies thereunder, please visit Mini-Circuits' website at www.minicircuits.com/MCLStore/terms.jsp

