

Engineering Development Model

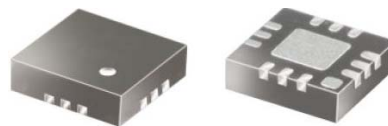
Power Splitter/Combiner

WP4-ED12616B

4 Way-0°

Important Note

This model has been designed, built and tested in our engineering department. Performance data represents model capability. At present it is a non-catalog model. On request, we can supply a final specification sheet, part number and price/delivery information.



Please click "Back", and then click "Contact Us" for Applications support.

CASE STYLE : DQ1225

| ELECTRICAL SPECIFICATIONS 50Ω @ +25°C | | | | |
|---------------------------------------|-----------------|------|------|------------|
| Parameter | | Min. | Typ. | Max. Units |
| Frequency | | 2700 | | 3800 MHz |
| Isolation | 2700 - 3800 MHz | | 27 | dB |
| Insertion Loss Above 6.0 dB | 2700 - 3800 MHz | | 0.80 | dB |
| Phase Unbalance | 2700 - 3800 MHz | | 2.60 | deg. |
| Amplitude Unbalance | 2700 - 3800 MHz | | 0.15 | dB |
| VSWR | SUM Port | | 1.60 | (:1) |
| | OUT Ports | | 1.35 | (:1) |

| MAXIMUM RATINGS | |
|-----------------------|----------------|
| Operating Temperature | -40°C to 85°C |
| Storage Temperature | -65°C to 150°C |

| PIN CONNECTIONS | |
|-----------------|------------------------|
| SUM PORT | 2 |
| PORT 1 | 12 |
| PORT 2 | 10 |
| PORT 3 | 6 |
| PORT 4 | 4 |
| GROUND | 1,3,5,7,8,9,11, paddle |

Functional Diagram

