

# Coaxial Frequency Mixer

## ZAD-11H+

Level 17 (LO Power +17 dBm) 10 to 3000 MHz



Generic photo used for illustration purposes only

CASE STYLE: M22

Connectors	Model
BNC	ZAD-11H+
BRACKET (OPTION "BR")	

### Maximum Ratings

Operating Temperature	-55°C to 100°C
Storage Temperature	-55°C to 100°C
RF Power	200mW
IF Current	40mA

Permanent damage may occur if any of these limits are exceeded.

### Coaxial Connections

LO	1
RF	3
IF	2

### Features

- low conversion loss, 6.83 dB typ.
- wideband, 10 to 3000 MHz
- rugged shielded case

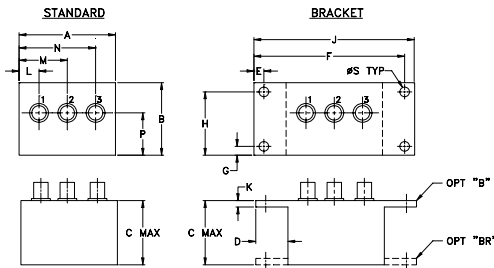
### Applications

- PCS/DCS
- cellular
- satellite distribution
- GPS
- instrumentation

### +RoHS Compliant

The +Suffix identifies RoHS Compliance. See our web site for RoHS Compliance methodologies and qualifications

### Outline Drawing



### Outline Dimensions (inch/mm)

A	B	C	D	E	F	G	H
2.25	1.38	1.24	.50	.150	3.100	.138	1.238
57.15	35.05	31.50	12.70	3.81	78.74	3.51	31.45

J	K	L	M	N	P	S	wt
3.25	.10	.40	1.15	1.86	.64	.150	grams
82.55	2.54	10.16	29.21	47.24	16.26	3.81	74.0

### Electrical Specifications

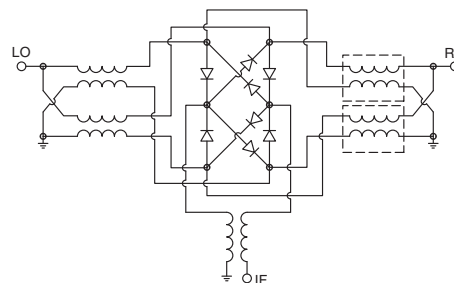
FREQUENCY (MHz)		CONVERSION LOSS (dB)				LO-RF ISOLATION (dB)						LO-IF ISOLATION (dB)					
LO/RF	IF	Mid-Band		Total Range		L		M		U		L		M		U	
$f_1$ - $f_2$		$\bar{X}$	$\sigma$	Max.	Max.	Typ.	Min.	Typ.	Min.	Typ.	Min.	Typ.	Min.	Typ.	Min.	Typ.	Min.
10-3000	10-1000	6.83	0.09	10.0	12.0	27	20	25	18	23	16	27	20	25	18	23	16

1 dB COMP.: +10 dBm typ. L = low range [ $f_1$  to  $10 f_1$ ] M = mid range [ $10 f_1$  to  $f_1/2$ ] U = upper range [ $f_1/2$  to  $f_1$ ]  
m = mid band [ $2f_1$  to  $f_1/2$ ]

### Typical Performance Data

Frequency (MHz)		Conversion Loss (dB)	Isolation L-R (dB)	Isolation L-I (dB)	VSWR RF Port (:1)	VSWR LO Port (:1)
RF	LO	LO +17dBm	LO +17dBm	LO +17dBm	LO +17dBm	LO +17dBm
10.00	40.00	6.43	32.26	35.01	1.13	2.07
20.00	50.00	6.58	33.52	36.23	1.07	2.19
103.44	73.44	6.60	32.25	33.97	1.08	2.01
200.00	170.00	6.78	30.89	32.03	1.13	1.96
290.31	260.31	6.75	29.76	30.61	1.18	1.91
500.00	470.00	6.94	28.74	29.28	1.29	1.83
570.63	540.69	6.81	28.80	29.04	1.34	1.81
757.50	727.50	7.00	28.06	28.08	1.48	1.81
944.38	913.91	7.05	28.00	26.87	1.66	1.80
1037.80	1007.40	7.37	28.67	26.49	1.72	1.74
1318.10	1288.00	6.81	27.69	26.66	1.92	1.69
1505.00	1474.90	6.68	27.57	27.97	1.99	1.65
1598.40	1568.30	6.65	27.30	28.78	1.75	1.91
1785.30	1755.00	6.71	27.75	28.96	1.89	1.91
1972.20	1942.10	6.57	29.51	31.44	1.76	1.75
2065.60	2035.10	6.76	28.94	33.79	1.68	1.66
2252.50	2222.10	6.61	30.22	36.80	1.68	1.49
2439.40	2408.60	6.63	31.19	37.00	1.69	1.14
2626.30	2596.00	6.95	30.21	30.13	1.49	1.26
3000.00	2969.30	8.58	32.46	26.88	1.90	2.47

### Electrical Schematic

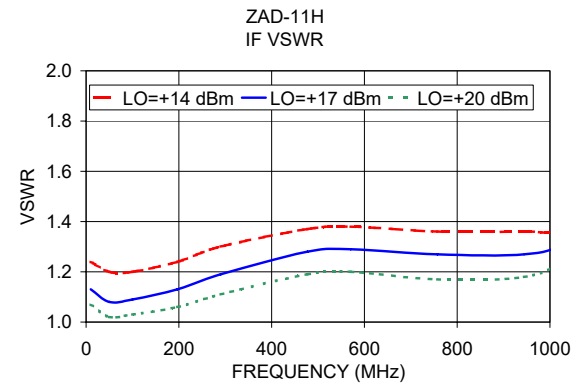
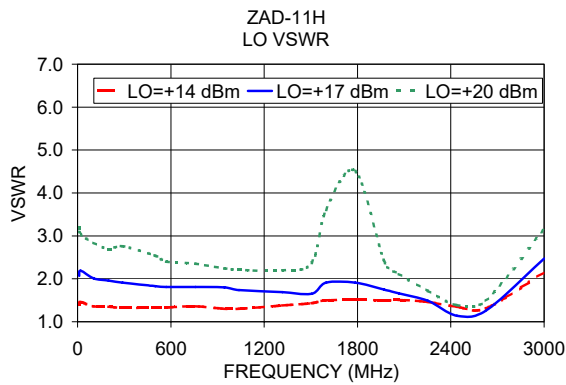
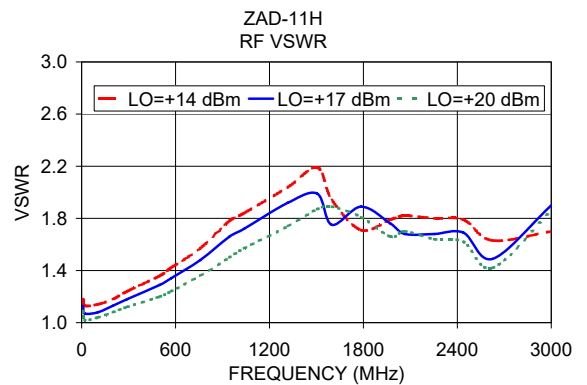
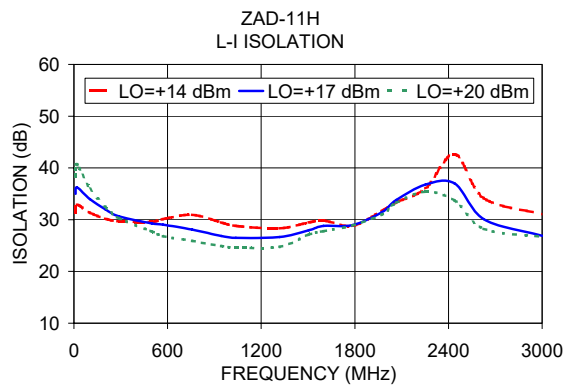
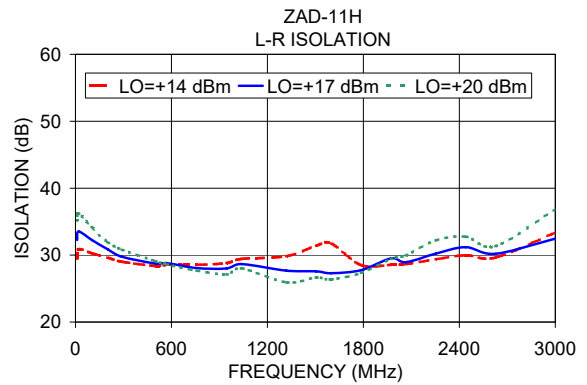
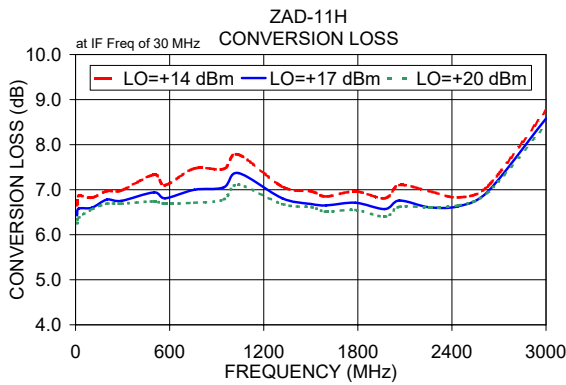


### Notes

- A. Performance and quality attributes and conditions not expressly stated in this specification document are intended to be excluded and do not form a part of this specification document.  
 B. Electrical specifications and performance data contained in this specification document are based on Mini-Circuit's applicable established test performance criteria and measurement instructions.  
 C. The parts covered by this specification document are subject to Mini-Circuits standard limited warranty and terms and conditions (collectively, "Standard Terms"); Purchasers of this part are entitled to the rights and benefits contained therein. For a full statement of the Standard Terms and the exclusive rights and remedies thereunder, please visit Mini-Circuits' website at [www.minicircuits.com/MCLStore/terms.jsp](http://www.minicircuits.com/MCLStore/terms.jsp)

REV. C  
M153690  
ZAD-11H+  
DJ/TD/CP/AM  
151116





**Notes**

- A. Performance and quality attributes and conditions not expressly stated in this specification document are intended to be excluded and do not form a part of this specification document.
- B. Electrical specifications and performance data contained in this specification document are based on Mini-Circuit's applicable established test performance criteria and measurement instructions.
- C. The parts covered by this specification document are subject to Mini-Circuits standard limited warranty and terms and conditions (collectively, "Standard Terms"); Purchasers of this part are entitled to the rights and benefits contained therein. For a full statement of the Standard Terms and the exclusive rights and remedies thereunder, please visit Mini-Circuits' website at [www.minicircuits.com/MCLStore/terms.jsp](http://www.minicircuits.com/MCLStore/terms.jsp)

