

Coaxial Frequency Mixer

ZAM-42

Level 7 (LO Power +7 dBm) 1500 to 4200 MHz



Generic photo used for illustration purposes only

CASE STYLE: F14
Connectors Model
SMA ZAM-42

Maximum Ratings

Operating Temperature	-55°C to 100°C
Storage Temperature	-55°C to 100°C
RF Power	50mW
IF Current	40mA

Permanent damage may occur if any of these limits are exceeded.

Coaxial Connections

LO	2
RF	1
IF	3

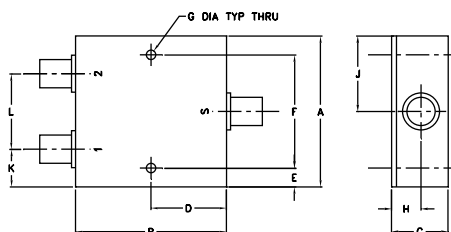
Features

- low conversion loss, 5.67 dB typ.
- wideband, 1500 to 4200 MHz
- rugged shielded case

Applications

- PCS
- MMDS
- instrumentation

Outline Drawing



A		B		C		D		E		F		G	
2.00	2.00	2.00	2.00	0.75	1.00	0.25	1.500	0.125					
50.80	50.80	19.05	25.40	6.35	38.10	3.18							
H		J		K		L		wt					
0.39	1.00	0.50	1.00					grams					
9.91	25.40	12.70	25.40					170.0					

Electrical Specifications

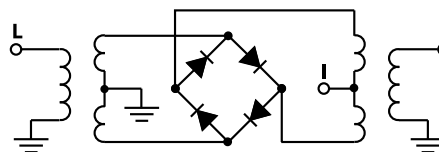
FREQUENCY (MHz)	CONVERSION LOSS (dB)	LO-RF ISOLATION (dB)		LO-IF ISOLATION (dB)	
		Typ.	Min.	Typ.	Min.
1500-4200	DC-500	25	14	18	10

1 dB COMP.: +1 dBm typ.

Typical Performance Data

Frequency (MHz)	Conversion Loss (dB)	Isolation L-R (dB)	Isolation L-I (dB)	VSWR RF Port (:1)	VSWR LO Port (:1)
1500.00	1450.00	5.47	27.2	2.52	6.05
1555.26	1505.26	5.66	27.0	2.55	6.05
1731.58	1681.58	5.63	26.0	2.80	7.60
1907.89	1857.89	5.74	26.2	2.88	7.28
2000.00	1950.00	6.02	26.9	2.76	7.00
2084.21	2034.21	6.33	26.9	2.76	7.00
2260.53	2210.53	6.59	26.3	2.80	7.60
2436.84	2386.84	7.00	25.8	3.06	8.31
2613.16	2563.16	6.59	25.6	2.80	5.85
2789.47	2739.47	5.91	23.8	2.80	5.03
2965.79	2915.79	5.58	21.7	2.52	5.49
3000.00	2950.00	5.59	21.4	2.40	6.05
3142.11	3092.11	5.40	20.7	2.01	4.12
3318.42	3268.42	5.79	21.3	1.65	2.84
3494.74	3444.74	5.92	20.8	2.30	2.96
3671.05	3621.05	5.51	21.1	1.94	4.12
3847.37	3797.37	5.78	22.2	1.97	4.89
4000.00	3950.00	5.81	23.2	1.91	5.33
4023.68	3973.68	5.91	23.4	1.92	5.03
4129.00	4079.00	5.93	24.0	1.97	4.89
4200.00	4150.00	5.99	24.9	2.14	4.89

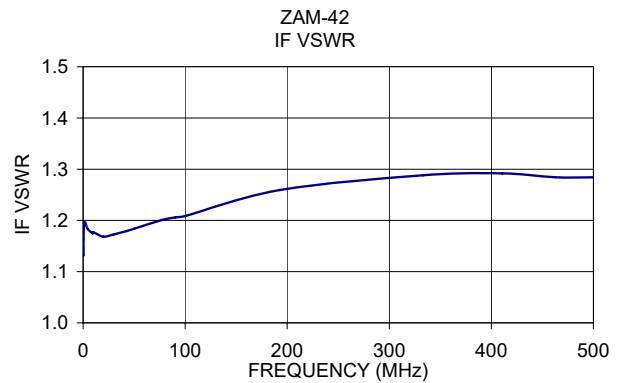
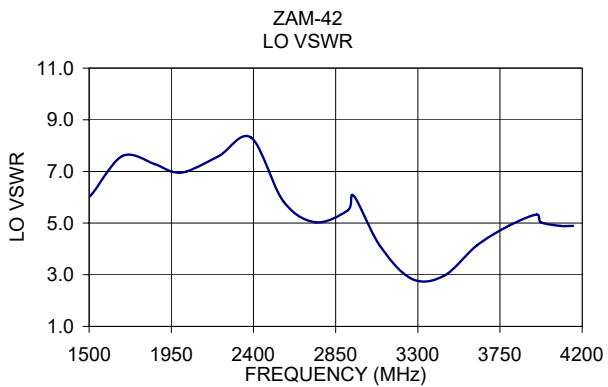
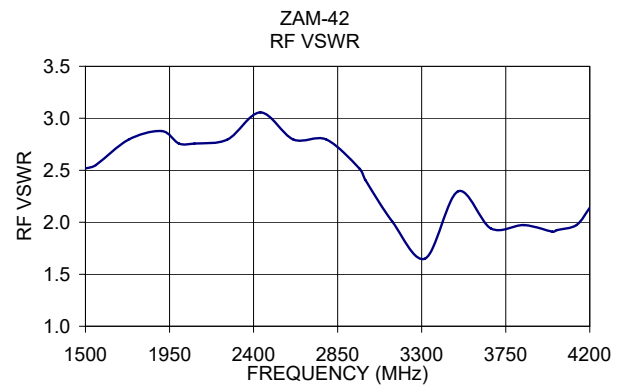
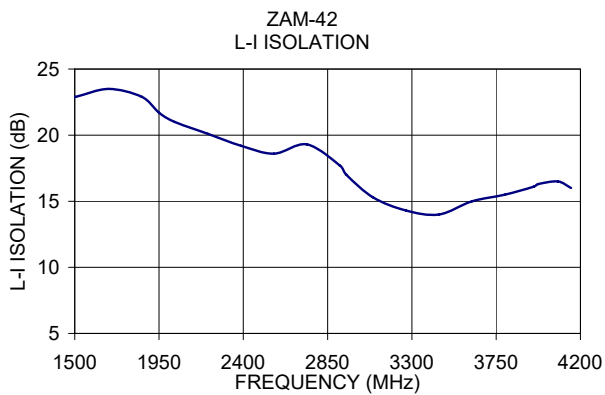
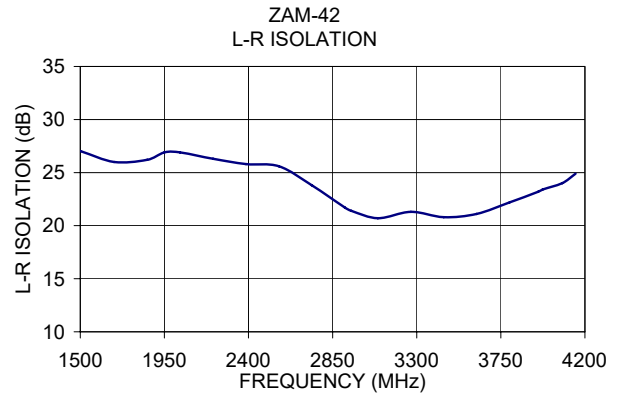
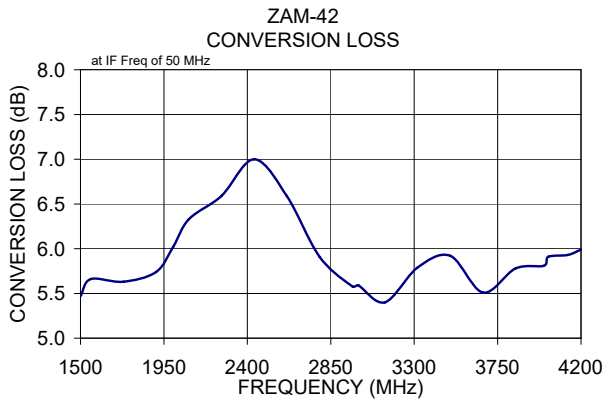
Electrical Schematic



Notes

- A. Performance and quality attributes and conditions not expressly stated in this specification document are intended to be excluded and do not form a part of this specification document.
 B. Electrical specifications and performance data contained in this specification document are based on Mini-Circuit's applicable established test performance criteria and measurement instructions.
 C. The parts covered by this specification document are subject to Mini-Circuit's standard limited warranty and terms and conditions (collectively, "Standard Terms"); Purchasers of this part are entitled to the rights and benefits contained therein. For a full statement of the Standard Terms and the exclusive rights and remedies thereunder, please visit Mini-Circuit's website at www.minicircuits.com/MCLStore/terms.jsp





Notes

- A. Performance and quality attributes and conditions not expressly stated in this specification document are intended to be excluded and do not form a part of this specification document.
- B. Electrical specifications and performance data contained in this specification document are based on Mini-Circuit's applicable established test performance criteria and measurement instructions.
- C. The parts covered by this specification document are subject to Mini-Circuits standard limited warranty and terms and conditions (collectively, "Standard Terms"); Purchasers of this part are entitled to the rights and benefits contained therein. For a full statement of the Standard Terms and the exclusive rights and remedies thereunder, please visit Mini-Circuits' website at www.minicircuits.com/MCLStore/terms.jsp

