

# High Power Power Splitter/Combiner

## ZAPDJ2-5W-521+

2 Way-180° 50Ω 10 to 520 MHz

### Maximum Ratings

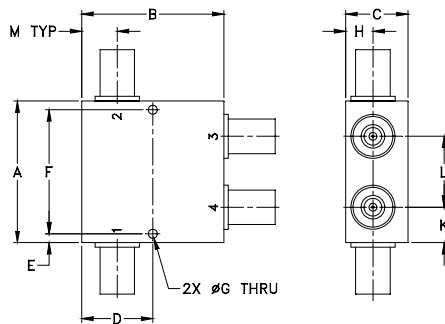
Operating Temperature	-55°C to 100°C
Storage Temperature	-55°C to 100°C
Power Input (as a splitter)	5W
Internal Dissipation	1W

Permanent damage may occur if any of these limits are

### Coaxial Connections

SUM PORT	1
PORT 1 (0°)	4
PORT 2 (180°)	3
NOTE USED	2

### Outline Drawing



### Outline Dimensions (inch/mm)

A	B	C	D	E	F	G
2.00	2.00	.88	1.000	0.13	1.750	0.125
50.80	50.80	22.35	25.40	3.30	44.45	3.18

H	J	K	L	M	wt
0.38	--	0.50	1.00	0.50	grams
9.65	--	12.70	25.40	12.70	250.0

### Electrical Schematic



### Features

- wideband, 10 to 520 MHz
- low phase unbalance, 2 deg. typ.
- low amplitude unbalance, 0.1 dB typ.
- high isolation, 23 dB typ.
- high input power as a splitter, 5.0 W

### Applications

- VHF/UHF
- communication systems
- receivers & transmitters
- instrumentation
- CATV



Generic photo used for illustration purposes only  
SMA version shown

CASE STYLE: JD1252

Connectors	Model
SMA	ZAPDJ2-5W-521S+
N-Type	ZAPDJ2-5W-521N+
BNC	ZAPDJ2-5W-521+

**+RoHS Compliant**

The +Suffix identifies RoHS Compliance. See our web site for RoHS Compliance methodologies and qualifications

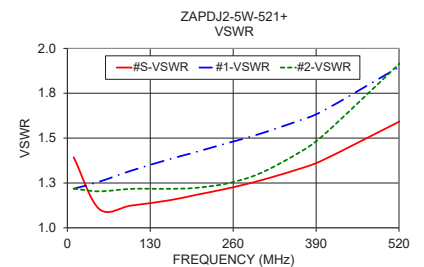
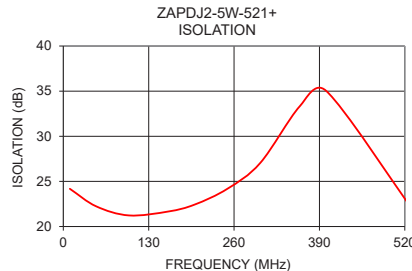
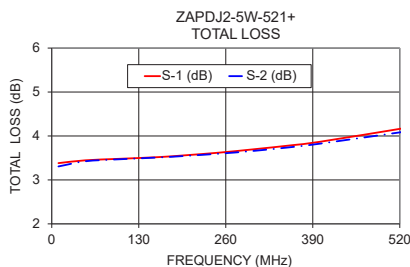
### Electrical Specifications at 25°C

Parameter	Frequency (MHz)	Min.	Typ.	Max.	Unit
<b>Frequency</b>		10		520	MHz
<b>Insertion Loss (above theoretical 3.0 dB)</b>	10 - 250 250 - 520	—	0.5 0.9	0.9 1.5	dB
<b>Isolation</b>	10 - 250 250 - 520	17 18	22 24	—	dB
<b>Phase Unbalance</b>	10 - 250 250 - 520	—	2.0 2.0	8.0 10	Degree
<b>Amplitude Unbalance</b>	10 - 250 250 - 520	—	0.05 0.1	0.2 0.35	dB
<b>VSWR (Port S)</b>	10 - 250 250 - 520	—	1.4 1.5	1.55 1.95	:1
<b>VSWR (Port 1-2)</b>	10 - 250 250 - 520	—	1.35 1.6	1.65 2.3	:1
<b>Input Power</b>					
as splitter	10 - 520	—	—	5.0	W
as combiner	10 - 520	—	—	1.0	

### Typical Performance Data

Frequency (MHz)	Total Loss <sup>1</sup> (dB)		Amplitude Unbalance (dB)	Isolation (dB)	Phase Unbalance (deg.)	VSWR S	VSWR 1	VSWR 2
	S-1	S-2						
10	3.38	3.31	0.08	24.18	179.96	1.39	1.22	1.22
50	3.45	3.42	0.02	22.24	179.43	1.10	1.26	1.20
100	3.48	3.47	0.01	21.23	179.08	1.12	1.32	1.22
160	3.52	3.51	0.01	21.67	178.76	1.15	1.38	1.22
200	3.56	3.55	0.01	22.43	178.60	1.18	1.42	1.22
250	3.62	3.60	0.02	24.19	178.48	1.22	1.47	1.25
300	3.69	3.66	0.04	27.05	178.46	1.26	1.52	1.30
360	3.79	3.75	0.04	33.32	178.69	1.32	1.59	1.41
400	3.87	3.82	0.04	35.05	179.07	1.38	1.65	1.51
525	4.17	4.09	0.08	22.57	178.05	1.60	1.91	1.93

1. Total Loss = Insertion Loss + 3dB splitter theoretical loss.



### Notes

- Performance and quality attributes and conditions not expressly stated in this specification document are intended to be excluded and do not form a part of this specification document.
- Electrical specifications and performance data contained in this specification document are based on Mini-Circuits' applicable established test performance criteria and measurement instructions.
- The parts covered by this specification document are subject to Mini-Circuits standard limited warranty and terms and conditions (collectively, "Standard Terms"); Purchasers of this part are entitled to the rights and benefits contained therein. For a full statement of the Standard Terms and the exclusive rights and remedies thereunder, please visit Mini-Circuits' website at [www.minicircuits.com/MCLStore/terms.jsp](http://www.minicircuits.com/MCLStore/terms.jsp)

