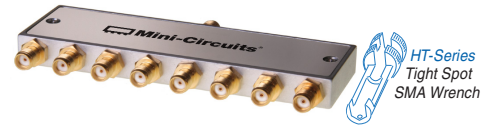


Coaxial

Power Splitter/Combiner

ZCSC-8-152-S+

8 Way-0° 50Ω 0.5 to 1550 MHz



Maximum Ratings

Operating Temperature	-55°C to 100°C
Storage Temperature	-55°C to 100°C
Power Input (as a splitter)	0.5W max.
Internal Dissipation	3.0W max.

Permanent damage may occur if any of these limits are exceeded.

Coaxial Connections

SUM PORT	S
PORT 1,2,3,4,5,6,7,8	1,2,3,4,5,6,7,8

Features

- high isolation, 32 dB min.
- very good matching VSWR, 1.2:1 typ.
- wide frequency band

Applications

- communication systems
- VHF/UHF
- cellular
- instrumentation

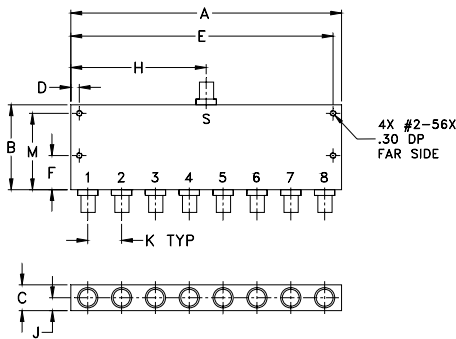
CASE STYLE: UU215

Connectors	Model
SMA	ZCSC-8-152-S+

+RoHS Compliant

The +Suffix identifies RoHS Compliance. See our web site for RoHS Compliance methodologies and qualifications

Outline Drawing



Outline Dimensions (inch/mm)

A	B	C	D	E	F
4.00	1.25	.38	.125	3.875	.500
101.60	31.75	9.65	3.18	98.43	12.70
G	H	J	K	M	wt
--	2.00	.19	.500	1.125	grams
--	50.80	4.83	12.70	28.58	77

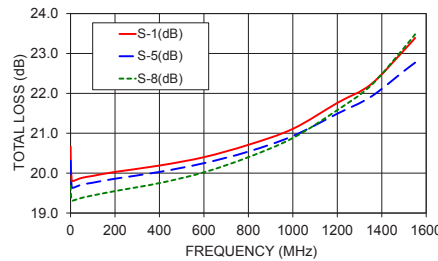
Electrical Specifications

FREQ. RANGE (MHz)	ISOLATION (dB)		INSERTION LOSS (dB)		PHASE UNBALANCE (Degrees)	AMPLITUDE UNBALANCE (dB)
	Typ.	Min	Typ.	Max.		
0.5-5	48	35	20	23	7	1.5
5-775	38	35	20.5	21.5	8	0.8
775-1550	35	32	22	24.5	14	1.3

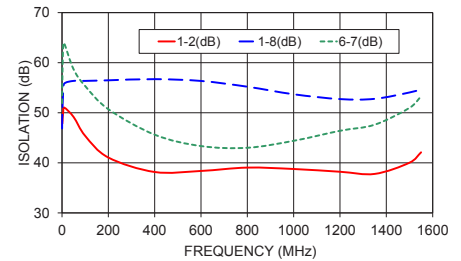
Typical Performance Data

Freq. (MHz)	Total Loss ¹ (dB)						Amp. Unbal. (dB)	Isolation (dB)				Phase Unbal. (deg.)	VSWR S	VSWR 1	VSWR 8
	S-1	S-2	S-3	S-5	S-6	S-8		1-2	1-8	3-4	6-7				
0.50	20.66	20.33	20.36	20.31	19.98	19.68	0.98	48.60	46.87	56.57	51.92	3.92	1.29	1.11	1.10
1.00	20.29	20.05	20.07	20.03	19.77	19.52	0.77	47.78	48.81	56.48	54.88	2.90	1.18	1.08	1.07
5.00	19.83	19.68	19.68	19.66	19.49	19.33	0.51	50.15	54.22	56.44	63.88	0.96	1.05	1.04	1.04
10.00	19.80	19.65	19.65	19.63	19.47	19.31	0.49	51.02	55.83	56.31	63.86	0.50	1.04	1.04	1.03
50.00	19.88	19.72	19.72	19.71	19.54	19.38	0.49	49.16	56.36	50.96	58.68	0.25	1.04	1.04	1.03
100.00	19.93	19.78	19.78	19.76	19.59	19.44	0.50	45.39	56.36	46.22	55.34	0.47	1.05	1.03	1.03
200.00	20.03	19.88	19.89	19.86	19.70	19.55	0.49	41.06	56.48	41.45	50.71	0.97	1.08	1.02	1.02
400.00	20.19	20.05	20.08	20.03	19.88	19.75	0.44	38.17	56.71	38.27	45.62	1.77	1.12	1.04	1.05
600.00	20.40	20.28	20.31	20.25	20.12	20.02	0.38	38.38	56.35	37.79	43.35	2.67	1.13	1.08	1.09
800.00	20.71	20.62	20.64	20.54	20.46	20.40	0.31	39.05	55.20	37.54	43.01	3.60	1.13	1.12	1.13
1000.00	21.11	21.04	21.09	20.93	20.91	20.88	0.23	38.77	53.69	37.37	44.40	4.58	1.18	1.16	1.17
1200.00	21.76	21.72	21.77	21.49	21.57	21.58	0.36	38.22	52.73	37.91	46.40	5.55	1.25	1.21	1.22
1350.00	22.22	22.21	22.33	21.91	22.07	22.19	0.42	37.79	52.78	38.32	47.62	6.40	1.33	1.25	1.26
1500.00	23.08	23.10	23.17	22.56	22.80	23.14	0.61	40.03	54.05	41.16	50.98	7.46	1.45	1.29	1.30
1550.00	23.39	23.42	23.44	22.77	23.02	23.48	0.71	42.10	54.66	43.65	53.28	7.99	1.50	1.30	1.30

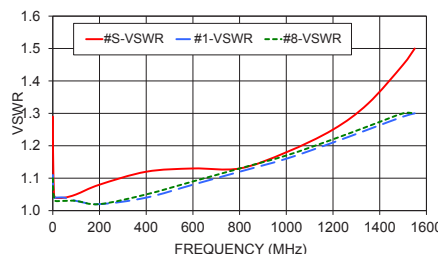
ZCSC-8-152-S+ 1. Total Loss = Insertion Loss + 9dB splitter loss.



ZCSC-8-152-S+ ISOLATION



ZCSC-8-152-S+ VSWR



electrical schematic



Notes

- Performance and quality attributes and conditions not expressly stated in this specification document are intended to be excluded and do not form a part of this specification document.
- Electrical specifications and performance data contained in this specification document are based on Mini-Circuit's applicable established test performance criteria and measurement instructions.
- The parts covered by this specification document are subject to Mini-Circuits standard limited warranty and terms and conditions (collectively, "Standard Terms"); Purchasers of this part are entitled to the rights and benefits contained therein. For a full statement of the Standard Terms and the exclusive rights and remedies thereunder, please visit Mini-Circuits' website at www.minicircuits.com/WCLStore/terms.jsp

