

Power Splitter/Combiner

ZFSC-4375+

4 Way-0° 75Ω 50 to 90 MHz

Maximum Ratings

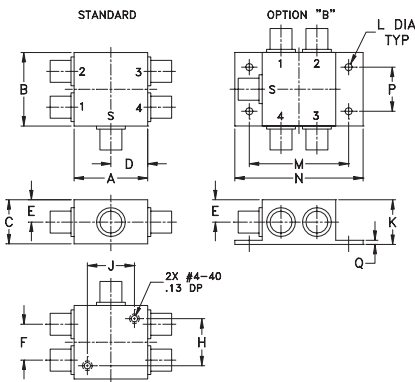
Operating Temperature	-55°C to 100°C
Storage Temperature	-55°C to 100°C
Power Input (as a splitter)	1W max.
Internal Dissipation	0.250W max.

Permanent damage may occur if any of these limits are exceeded.

Coaxial Connections

SUM PORT	S
PORT 1	1
PORT 2	2
PORT 3	3
PORT 4	4

Outline Drawing



Outline Dimensions (inch/mm)

A	B	C	D	E	F	G	H
1.25	1.25	.75	.63	.38	.61	--	.80
31.75	31.75	19.05	16.00	9.65	15.49	--	20.32
J	K	L	M	N	P	Q	wt
.80	.76	.125	1.688	2.18	.75	.07	grams
20.32	19.30	3.18	42.88	55.37	19.05	1.78	85.0

Features

- high isolation, 34 dB typ.
- low insertion loss, 0.3 dB typ.
- rugged shielded case
- excellent VSWR, 1.05:1 typ.

Applications

- VHF
- radio communication



BNC version shown
CASE STYLE: G15

Connectors Model
BNC ZFSC-4375+
BRACKET (OPTION "B")

+RoHS Compliant
The +Suffix identifies RoHS Compliance. See our web site for RoHS Compliance methodologies and qualifications

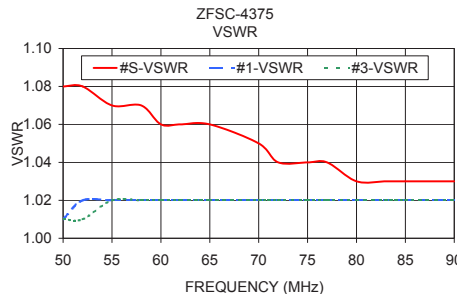
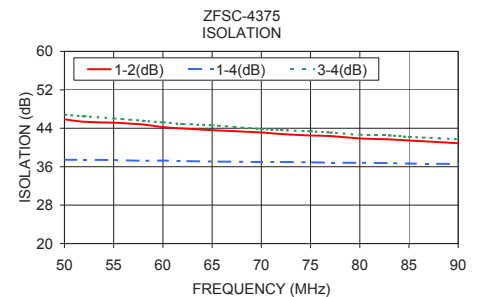
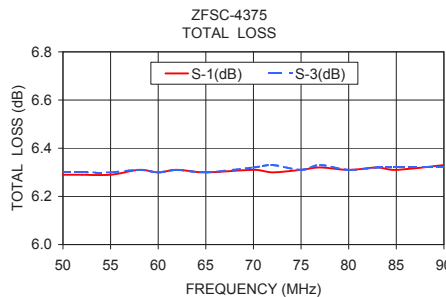
Electrical Specifications

FREQ. RANGE (MHz)	ISOLATION (dB)		INSERTION LOSS (dB) ABOVE 6.0 dB		PHASE UNBALANCE (Degrees)	AMPLITUDE UNBALANCE (dB)
	Typ.	Min.	Typ.	Max.		
f_L - f_U					Max.	Max.
50-90	34	30	0.3	0.8	4	0.15

Typical Performance Data

Freq. (MHz)	Total Loss ¹ (dB)				Amp. Unbal. (dB)	Isolation (dB)			Phase Unbal. (deg.)	VSWR S	VSWR 1	VSWR 2	VSWR 3	VSWR 4
	S-1	S-2	S-3	S-4		1-2	1-4	3-4						
50.00	6.29	6.29	6.30	6.29	0.01	45.87	37.46	46.83	0.25	1.08	1.01	1.01	1.01	1.01
52.00	6.29	6.29	6.30	6.30	0.01	45.35	37.43	46.49	0.22	1.08	1.02	1.01	1.01	1.01
55.00	6.29	6.29	6.30	6.29	0.01	45.15	37.39	46.06	0.28	1.07	1.02	1.01	1.02	1.02
58.00	6.31	6.30	6.31	6.31	0.01	44.78	37.24	45.54	0.28	1.07	1.02	1.02	1.02	1.02
60.00	6.30	6.30	6.30	6.30	0.01	44.24	37.29	45.24	0.40	1.06	1.02	1.02	1.02	1.02
62.00	6.31	6.31	6.31	6.31	0.01	43.95	37.16	44.90	0.28	1.06	1.02	1.02	1.02	1.02
65.00	6.30	6.31	6.30	6.31	0.01	43.62	37.08	44.62	0.37	1.06	1.02	1.02	1.02	1.02
70.00	6.31	6.32	6.32	6.32	0.01	43.13	36.98	43.83	0.33	1.05	1.02	1.02	1.02	1.02
72.00	6.30	6.31	6.33	6.32	0.02	42.80	36.99	43.62	0.37	1.04	1.02	1.02	1.02	1.02
75.00	6.31	6.31	6.31	6.31	0.01	42.50	36.91	43.36	0.39	1.04	1.02	1.02	1.02	1.02
77.00	6.32	6.32	6.33	6.32	0.01	42.38	36.84	43.13	0.41	1.04	1.02	1.02	1.02	1.02
80.00	6.31	6.32	6.31	6.31	0.01	41.89	36.81	42.65	0.36	1.03	1.02	1.02	1.02	1.02
83.00	6.32	6.32	6.32	6.33	0.02	41.68	36.76	42.52	0.38	1.03	1.02	1.02	1.02	1.02
85.00	6.31	6.32	6.32	6.32	0.01	41.46	36.66	42.21	0.38	1.03	1.02	1.02	1.02	1.02
90.00	6.33	6.32	6.32	6.32	0.01	40.89	36.58	41.70	0.54	1.03	1.02	1.02	1.02	1.02

1. Total Loss = Insertion Loss + 6dB splitter loss.



electrical schematic



Notes

- Performance and quality attributes and conditions not expressly stated in this specification document are intended to be excluded and do not form a part of this specification document.
- Electrical specifications and performance data contained in this specification document are based on Mini-Circuit's applicable established test performance criteria and measurement instructions.
- The parts covered by this specification document are subject to Mini-Circuits standard limited warranty and terms and conditions (collectively, "Standard Terms"); Purchasers of this part are entitled to the rights and benefits contained therein. For a full statement of the Standard Terms and the exclusive rights and remedies thereunder, please visit Mini-Circuits' website at www.minicircuits.com/WCLStore/terms.jsp

