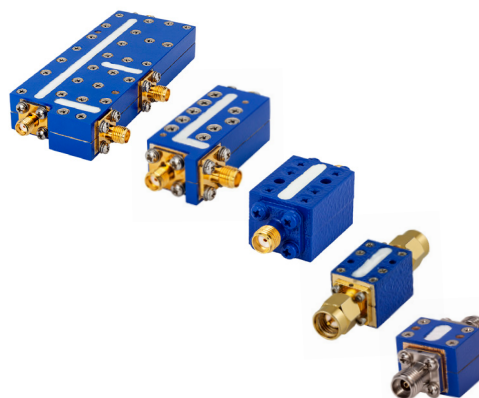


Suspended Substrate Stripline Filters and Multiplexers

50Ω DC to 40 GHz



The Big Deal

- Low insertion loss
- Ultra-wide passband width
- Fast roll-off with wide stopband
- Good power handling and temperature stability
- Passband up to 40 GHz
- Stopband up to 40 GHz

Product Overview

Mini-Circuits' Suspended Substrate Stripline filters offer low insertion loss by implementing printed circuit board suspended between two parallel ground planes, providing high Q. Low insertion loss combined with wide stopband makes them an excellent choice for wideband instruments and systems like ECM, ECCM, ELINT and ultra-broadband receivers.

Low pass, high pass, band pass, band stop, diplexer and multiplexer designs can be realized with this technology. Advanced filter design and construction can achieve stopband width greater than 6x the center frequency, and temperature stability will be better than other printed circuit realizations because the fields are mainly in the air rather than in a dielectric. The inside walls of the housing hold the circuit and prevent movement that could be caused by vibration or mechanical shock, making these designs excellent candidates for harsh operating environments.

Suspended substrate stripline filters can be realized in small form factors with high-quality, precise machining for applications where size is critical. Excellent repeatability across units is achieved through precise tuning and process control.

Key Features

Feature	Advantages
Low insertion loss	Low signal loss results in better SNR in receiver front end and better power delivery to antenna in transmitters
Fast roll-off	Higher selectivity results in better adjacent channel rejection and dynamic range
Wide stopband	Wide, spur-free stop band results in better receiver sensitivity
High power handling	Well suited for transmitter applications
Excellent temperature stability	Ensures minimal variation in electrical performance across temperature

Notes

- A. Performance and quality attributes and conditions not expressly stated in this specification document are intended to be excluded and do not form a part of this specification document.
- B. Electrical specifications and performance data contained in this specification document are based on Mini-Circuit's applicable established test performance criteria and measurement instructions.
- C. The parts covered by this specification document are subject to Mini-Circuits standard limited warranty and terms and conditions (collectively, "Standard Terms"); Purchasers of this part are entitled to the rights and benefits contained therein. For a full statement of the Standard Terms and the exclusive rights and remedies thereunder, please visit Mini-Circuits' website at www.minicircuits.com/MCLStore/terms.jsp



Suspended substrate stripline High Pass Filter

ZHSS-K21G+

50Ω 21000 to 40000 MHz



Generic photo used for illustration purposes only

CASE STYLE: UJ2936

Connectors	Model
2.92mm-F	ZHSS-K21G+

Features

- Wider passband up to 40000 MHz
- Low insertion loss of 1 dB typical
- Sharp rejection of 90 dB typical
- Connectorized package

Applications

- 5G
- Very wideband test and instrumentation
- Satellite communication
- Transmitter / Receiver

Electrical Specifications at 25°C

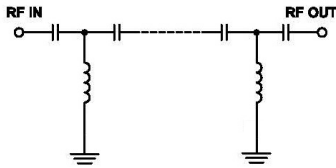
Parameter	F#	Frequency (MHz)	Min.	Typ.	Max.	Unit
Stop Band	Rejection Loss	DC-F1	60	80	-	dB
		F1-F2	20	40	-	dB
Pass Band	Insertion Loss	F3-F4	-	1.0	2.5	dB
	VSWR	F3-F4	-	2.0	-	:1

Maximum Ratings

Operating Temperature	-40°C to 85°C
Storage Temperature	-55°C to 100°C
RF Power Input	2 W @ 25°C

Permanent damage may occur if any of these limits are exceeded.

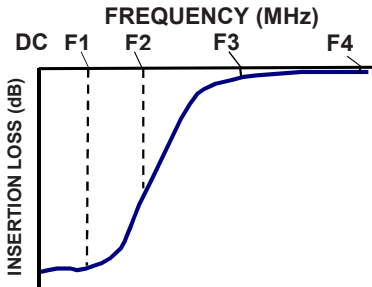
Functional Schematic



Typical Performance Data at 25°C

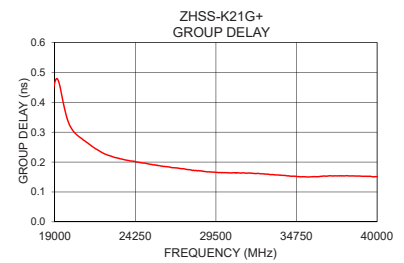
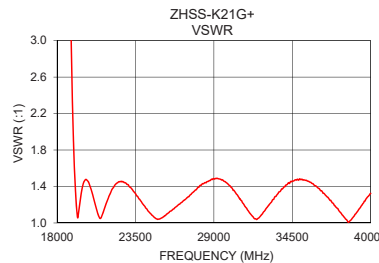
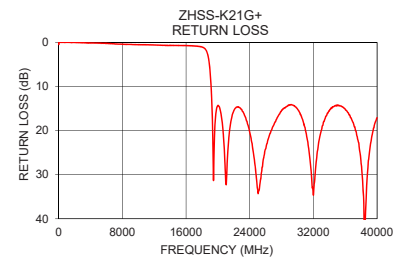
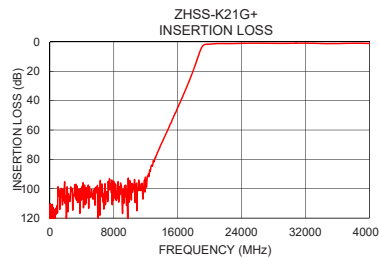
Frequency (MHz)	Insertion Loss (dB)	VSWR (:1)	Frequency (MHz)	Group Delay (ns)
10	128.62	1007.64	21000	0.27
100	123.52	1054.56	22000	0.23
1000	98.96	896.84	23000	0.21
2000	106.16	462.75	24000	0.20
3000	104.73	207.10	25000	0.20
5000	105.35	104.70	26000	0.19
10000	94.71	35.02	27000	0.18
13000	81.68	27.02	28000	0.17
16000	44.66	28.17	29000	0.17
17000	32.40	27.82	30000	0.16
17800	21.70	22.67	31000	0.16
19000	3.83	2.92	32000	0.16
21000	1.11	1.02	33000	0.16
30000	0.94	1.40	34000	0.16
31000	0.85	1.21	35000	0.15
31900	0.83	1.15	36000	0.15
32000	0.85	1.15	37000	0.15
33000	0.92	1.33	38000	0.15
35000	1.16	1.54	39000	0.15
40000	1.07	1.34	40000	0.15

Typical Frequency Response



+RoHS Compliant

The +Suffix identifies RoHS Compliance. See our web site for RoHS Compliance methodologies and qualifications



Notes

- Performance and quality attributes and conditions not expressly stated in this specification document are intended to be excluded and do not form a part of this specification document.
- Electrical specifications and performance data contained in this specification document are based on Mini-Circuit's applicable established test performance criteria and measurement instructions.
- The parts covered by this specification document are subject to Mini-Circuits standard limited warranty and terms and conditions (collectively, "Standard Terms"); Purchasers of this part are entitled to the rights and benefits contained therein. For a full statement of the Standard Terms and the exclusive rights and remedies thereunder, please visit Mini-Circuits' website at www.minicircuits.com/MCLStore/terms.jsp



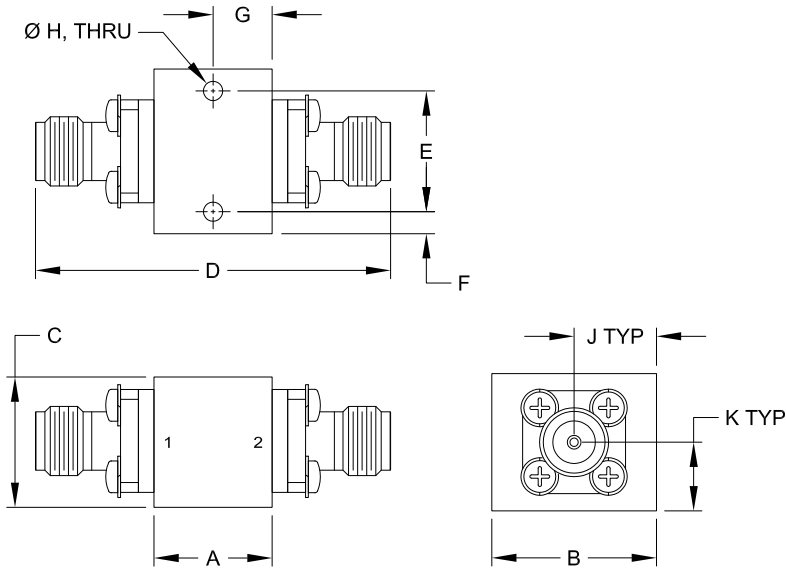
www.minicircuits.com P.O. Box 350166, Brooklyn, NY 11235-0003 (718) 934-4500 sales@minicircuits.com

REV. OR
ECO-005518
ZHSS-K21G+
EDU3789
URJ
201228
Page 2 of 3

Coaxial Connections

PORT - 1	2.92mm-Female
PORT - 2	2.92mm-Female

Outline Drawing



Outline Dimensions ($\frac{\text{inch}}{\text{mm}}$)

A	B	C	D	E	F
.43	.60	.48	1.30	.440	.08
10.9	15.2	12.1	33.0	11.18	2.0
G	H	J	K	Wt.	
.22	.070	.30	.25	grams	
5.5	1.78	7.6	6.4	21	

Note: Please refer to case style drawing for details

Notes

- A. Performance and quality attributes and conditions not expressly stated in this specification document are intended to be excluded and do not form a part of this specification document.
- B. Electrical specifications and performance data contained in this specification document are based on Mini-Circuit's applicable established test performance criteria and measurement instructions.
- C. The parts covered by this specification document are subject to Mini-Circuits standard limited warranty and terms and conditions (collectively, "Standard Terms"); Purchasers of this part are entitled to the rights and benefits contained therein. For a full statement of the Standard Terms and the exclusive rights and remedies thereunder, please visit Mini-Circuits' website at www.minicircuits.com/MCLStore/terms.jsp