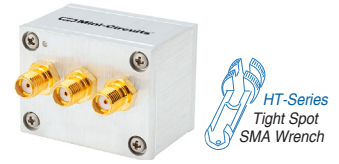


Coaxial Frequency Mixer

ZLW-1W+

Level 7 (LO Power +7 dBm) 1 to 750 MHz



Generic photo used for illustration purposes only

Maximum Ratings

Operating Temperature	-55°C to 100°C
Storage Temperature	-55°C to 100°C
RF Power	50mW
IF Current	40mA

Permanent damage may occur if any of these limits are exceeded.

Coaxial Connections

LO	1
RF	3
IF	2

Features

- low conversion loss, 5.74 dB typ.
- high L-R isolation, 45 dB typ., L-I, 40 dB typ.
- wideband, 1 to 750 MHz
- rugged shielded case

Applications

- VHF/UHF
- instrumentations
- defense & federal communications

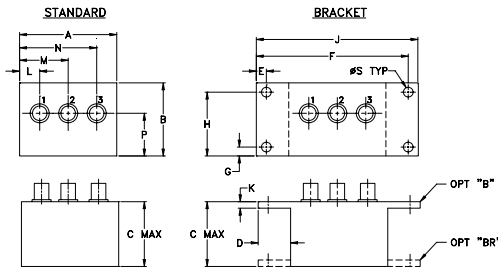
CASE STYLE: M21

Connectors	Model
SMA	ZLW-1W+
BRACKET (OPTION "B")	
BRACKET (OPTION "BR")	

+RoHS Compliant

The +Suffix identifies RoHS Compliance. See our web site for RoHS Compliance methodologies and qualifications

Outline Drawing



Outline Dimensions (inch/mm)

A	B	C	D	E	F	G	H
1.50	1.13	1.00	.50	.155	2.345	.138	.987
38.10	28.70	25.40	12.70	3.94	59.56	3.51	25.07

J	K	L	M	N	P	S	wt
2.50	.10	.31	.75	1.19	.66	.150	grams
63.50	2.54	7.87	19.05	30.23	16.76	3.81	40.0

Electrical Specifications

FREQUENCY (MHz)	CONVERSION LOSS (dB)	LO-RF ISOLATION (dB)			LO-IF ISOLATION (dB)		
		L	M	U	L	M	U
1-750	5.74	50	45	35	45	30	25

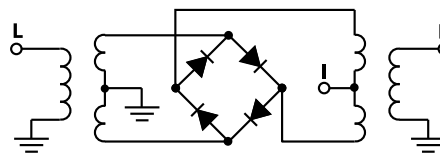
1 dB COMP.: +1 dBm typ.

L = low range [f_L to $10 f_L$] M = mid range [$10 f_L$ to $f_U/2$] U = upper range [$f_U/2$ to f_U]
 m = mid band [$2f_L$ to $f_U/2$]

Typical Performance Data

Frequency (MHz)	Conversion Loss (dB)	Isolation L-R (dB)	Isolation L-I (dB)	VSWR RF Port (:1)	VSWR LO Port (:1)	
					LO +7dBm	LO +7dBm
1.00	31.00	6.42	>67.00	1.20	3.31	
2.00	32.00	5.97	>67.00	1.12	3.09	
5.00	35.00	5.50	>67.00	1.10	3.15	
10.00	40.00	5.66	>67.00	1.12	2.99	
20.00	50.00	5.60	>67.00	1.14	2.99	
50.00	80.00	5.60	>67.00	1.16	2.84	
100.00	70.00	5.47	>67.00	1.20	2.88	
130.14	100.14	5.52	57.96	1.23	2.75	
200.00	170.00	5.62	50.48	1.30	2.74	
285.11	255.11	5.47	45.61	1.35	2.74	
362.59	332.59	5.71	42.62	1.40	2.78	
414.25	384.25	5.97	40.09	1.45	2.78	
500.00	470.00	6.14	39.49	1.48	2.80	
543.39	513.39	6.24	37.59	1.50	2.82	
595.04	565.04	6.21	37.44	1.49	2.85	
646.70	616.70	6.16	36.31	1.51	2.93	
672.53	642.53	6.27	36.63	1.58	2.94	
698.36	668.36	6.43	36.64	1.64	3.03	
724.18	694.18	6.68	36.68	1.72	3.01	
750.00	720.00	6.98	35.77	1.83	3.01	

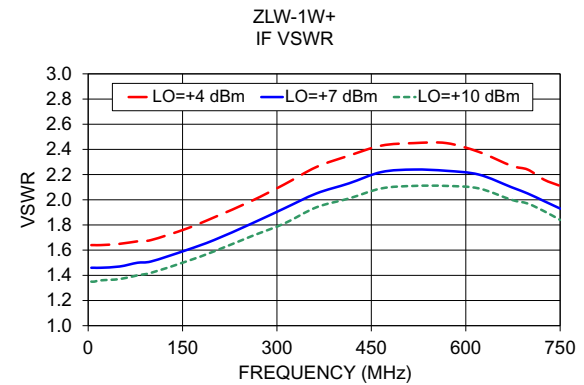
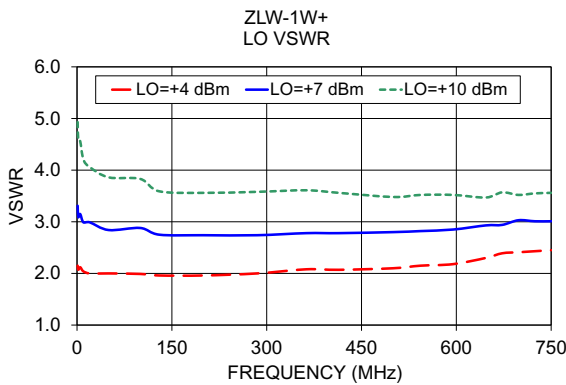
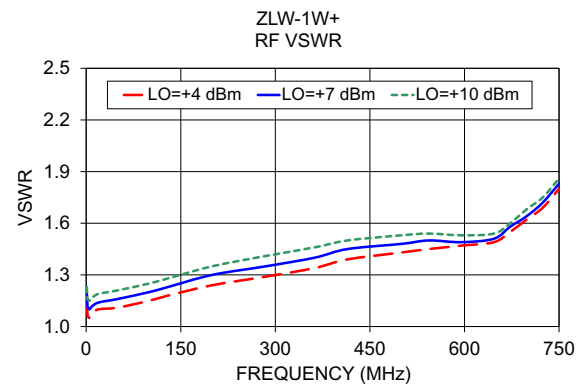
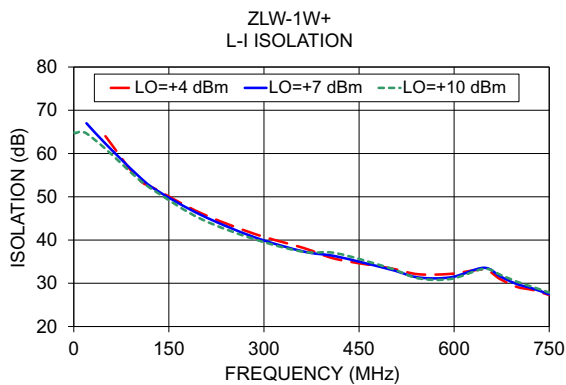
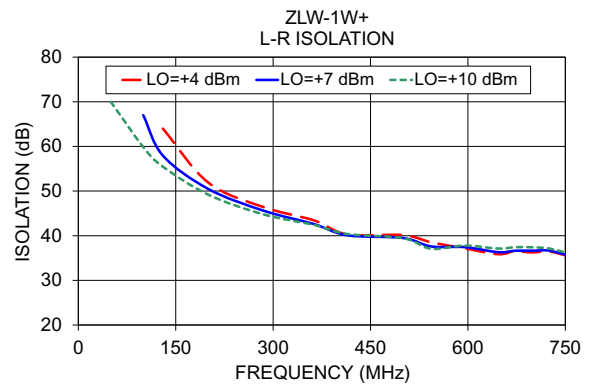
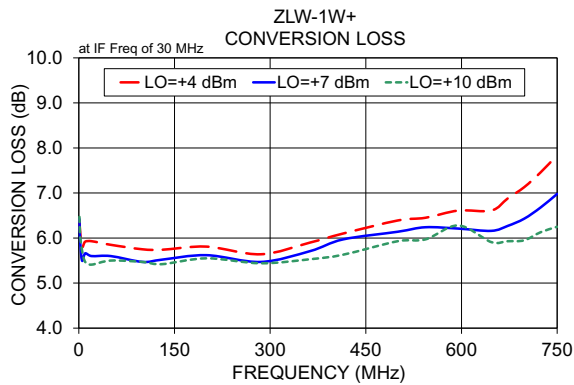
Electrical Schematic



Notes

- Performance and quality attributes and conditions not expressly stated in this specification document are intended to be excluded and do not form a part of this specification document.
- Electrical specifications and performance data contained in this specification document are based on Mini-Circuit's applicable established test performance criteria and measurement instructions.
- The parts covered by this specification document are subject to Mini-Circuits standard limited warranty and terms and conditions (collectively, "Standard Terms"); Purchasers of this part are entitled to the rights and benefits contained therein. For a full statement of the Standard Terms and the exclusive rights and remedies thereunder, please visit Mini-Circuits' website at www.minicircuits.com/WCLStore/terms.jsp





Notes

- A. Performance and quality attributes and conditions not expressly stated in this specification document are intended to be excluded and do not form a part of this specification document.
- B. Electrical specifications and performance data contained in this specification document are based on Mini-Circuit's applicable established test performance criteria and measurement instructions.
- C. The parts covered by this specification document are subject to Mini-Circuits standard limited warranty and terms and conditions (collectively, "Standard Terms"); Purchasers of this part are entitled to the rights and benefits contained therein. For a full statement of the Standard Terms and the exclusive rights and remedies thereunder, please visit Mini-Circuits' website at www.minicircuits.com/MCLStore/terms.jsp

