

# Coaxial Frequency Mixer

Level 7 (LO Power +7 dBm) 3700 to 7000 MHz

## ZMX-7GR



Generic photo used for illustration purposes only

CASE STYLE: BU413

Connectors	Model
SMA	ZMX-7GR

### Maximum Ratings

Operating Temperature	-55°C to 100°C
Storage Temperature	-55°C to 100°C
RF Power	50mW
IF Current	40mA

Permanent damage may occur if any of these limits are exceeded.

### Coaxial Connections

LO	2
RF	1
IF	3

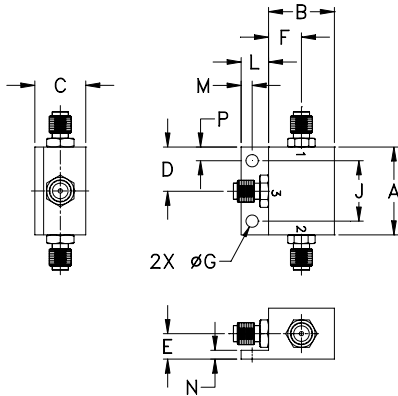
### Features

- wide frequency range, 3700 to 7000 MHz
- low conversion loss, 5.0 dB typ.
- high L-I isolation, 36 dB typ.

### Applications

- SATCOM
- instrumentation
- defense & federal communications
- SHF

### Outline Drawing



### Outline Dimensions (inch/mm)

A	B	C	D	E	F	G	H	
1.00	.75	.58	.50	.29	.38	.140	--	
25.40	19.05	14.73	12.70	7.37	9.65	3.56	--	
J	K	L	M	N	P		wt	
.687	--	.32	.13	.10	.16		grams	25.0
17.45	--	8.13	3.30	2.54	4.06			

### Electrical Specifications

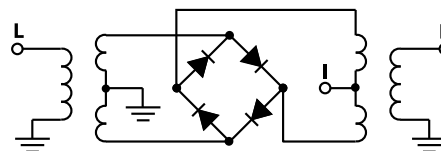
FREQUENCY (MHz)	CONVERSION LOSS (dB)	LO-RF ISOLATION (dB)		LO-IF ISOLATION (dB)	
		Typ.	Min.	Typ.	Min.
3700-7000	5.0	30	20	36	20

1 dB COMP.: +1 dBm typ.

### Typical Performance Data

Frequency (MHz)	Conversion Loss (dB)	Isolation L-R (dB)	Isolation L-I (dB)	VSWR RF Port (:1)	VSWR LO Port (:1)
3700.00	4.25	30.50	25.89	1.09	1.23
3949.06	4.38	29.45	27.95	1.94	1.29
4000.00	4.40	29.82	28.13	2.21	1.34
4198.11	4.74	31.47	29.71	3.01	1.41
4447.17	5.21	32.54	31.21	3.28	1.35
4633.96	5.53	30.64	31.84	3.09	1.27
4820.75	5.68	30.03	32.73	2.74	1.28
5000.00	5.69	30.38	33.91	2.70	1.20
5194.34	5.73	30.78	34.92	2.98	1.15
5443.40	5.81	30.19	35.19	3.32	1.09
5692.45	5.95	30.25	35.33	3.76	1.13
5879.25	5.99	30.83	35.33	4.12	1.16
6000.00	6.26	30.52	35.10	4.29	1.16
6128.30	6.57	30.24	34.77	4.77	1.12
6252.83	6.64	29.94	34.14	4.76	1.13
6377.36	6.72	29.71	33.58	4.82	1.18
6501.89	6.68	29.55	32.81	4.73	1.20
6626.42	6.58	29.56	32.09	4.74	1.19
6875.47	6.29	28.82	30.49	4.41	1.07
7000.00	6.26	28.55	29.90	4.17	1.13

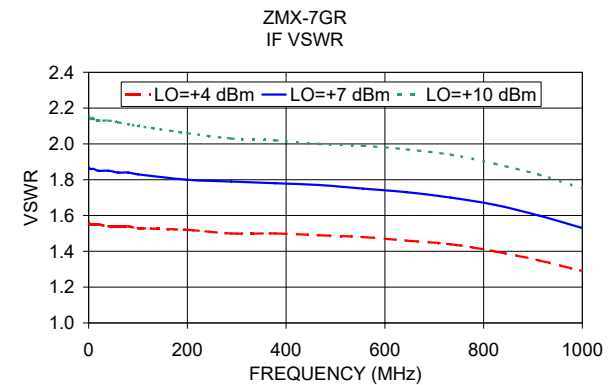
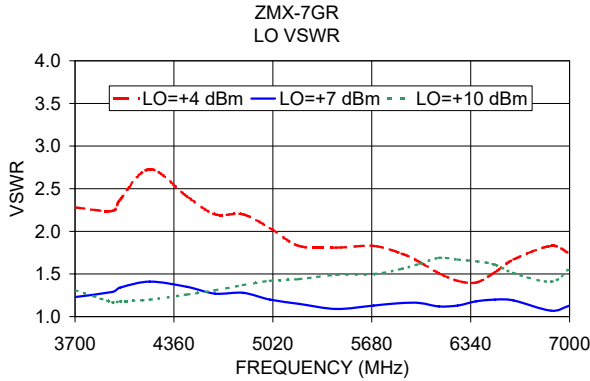
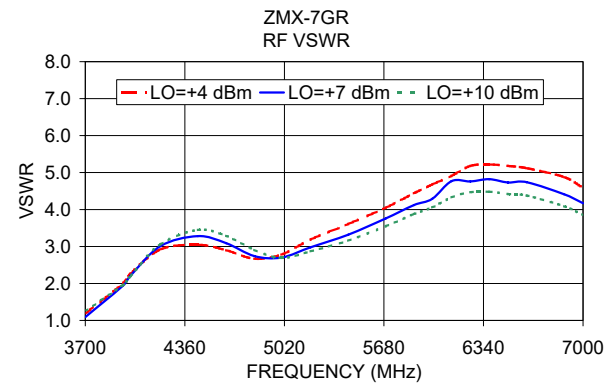
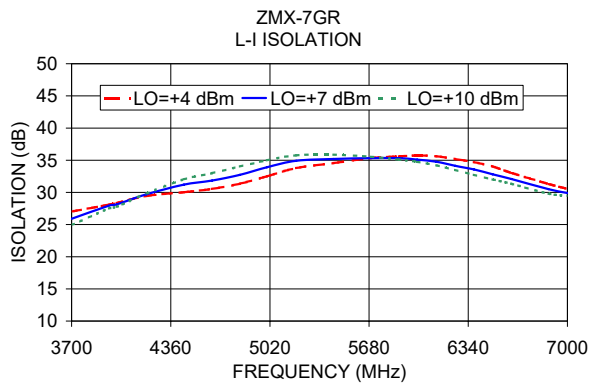
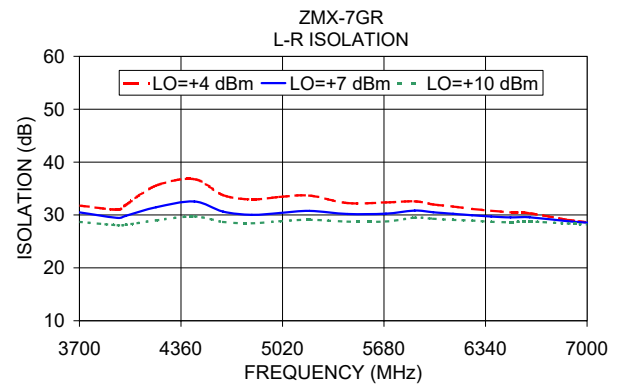
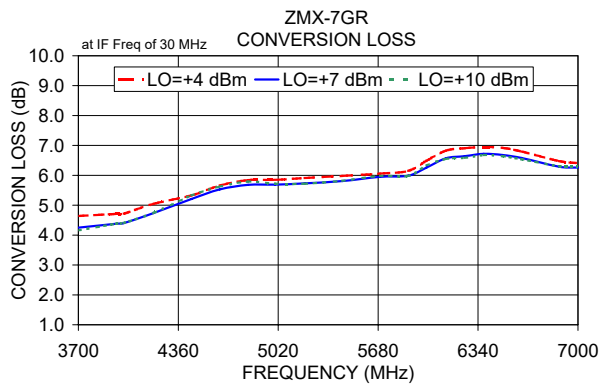
### Electrical Schematic



### Notes

- Performance and quality attributes and conditions not expressly stated in this specification document are intended to be excluded and do not form a part of this specification document.
- Electrical specifications and performance data contained in this specification document are based on Mini-Circuit's applicable established test performance criteria and measurement instructions.
- The parts covered by this specification document are subject to Mini-Circuits standard limited warranty and terms and conditions (collectively, "Standard Terms"); Purchasers of this part are entitled to the rights and benefits contained therein. For a full statement of the Standard Terms and the exclusive rights and remedies thereunder, please visit Mini-Circuits' website at [www.minicircuits.com/MCLStore/terms.jsp](http://www.minicircuits.com/MCLStore/terms.jsp)





**Notes**

- A. Performance and quality attributes and conditions not expressly stated in this specification document are intended to be excluded and do not form a part of this specification document.
- B. Electrical specifications and performance data contained in this specification document are based on Mini-Circuit's applicable established test performance criteria and measurement instructions.
- C. The parts covered by this specification document are subject to Mini-Circuit's standard limited warranty and terms and conditions (collectively, "Standard Terms"); Purchasers of this part are entitled to the rights and benefits contained therein. For a full statement of the Standard Terms and the exclusive rights and remedies thereunder, please visit Mini-Circuit's website at [www.minicircuits.com/MCLStore/terms.jsp](http://www.minicircuits.com/MCLStore/terms.jsp)

