

# Coaxial Frequency Mixer

Level 10 (LO Power +10 dBm) 3700 to 8000 MHz

## ZMX-8GLH



Generic photo used for illustration purposes only

CASE STYLE: BU413

Connectors	Model
SMA	ZMX-8GLH

### Maximum Ratings

Operating Temperature	-55°C to 100°C
Storage Temperature	-55°C to 100°C
RF Power	50mW
IF Current	40mA

### Coaxial Connections

LO	1
RF	2
IF	3

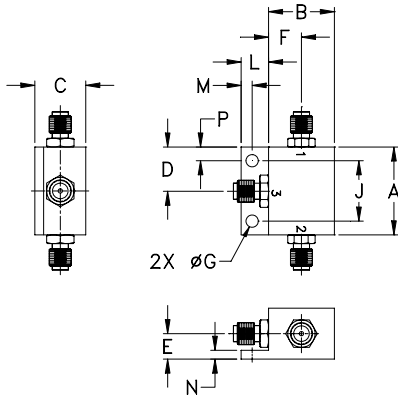
### Features

- wide frequency range, 3700 to 8000 MHz
- low conversion loss, 5.5 dB typ.
- high L-R isolation, 40 dB typ.

### Applications

- SATCOM
- instrumentation
- defense & federal communications
- SHF

### Outline Drawing



### Outline Dimensions (inch/mm)

A	B	C	D	E	F	G	H
1.00	.75	.58	.50	.29	.38	.140	--
25.40	19.05	14.73	12.70	7.37	9.65	3.56	--
J	K	L	M	N	P	wt	
.687	--	.32	.13	.10	.16	grams	
17.45	--	8.13	3.30	2.54	4.06	25.0	

### Electrical Specifications

FREQUENCY (MHz)	CONVERSION LOSS* (dB)	LO-RF ISOLATION (dB)		LO-IF ISOLATION (dB)	
		Typ.	Min.	Typ.	Min.
3700-8000	DC-2000	40	20	18	8

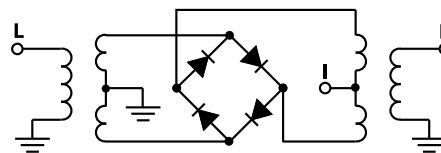
1 dB COMP.: +5 dBm typ.

\* Above 750 MHz IF, conversion loss increases up to 9.8 dB max.

### Typical Performance Data

Frequency (MHz)	Conversion Loss (dB)	Isolation L-R (dB)	Isolation L-I (dB)	VSWR RF Port (:1)	VSWR LO Port (:1)
3700.00	3730.00	5.07	34.59	10.57	5.02
3918.64	3948.64	5.14	34.05	11.06	5.42
4000.00	4030.00	5.12	34.96	11.46	5.47
4283.05	4313.05	5.15	40.84	12.40	5.55
4574.58	4604.58	4.92	41.61	13.36	6.15
4866.10	4896.10	4.80	37.25	14.74	5.69
5000.00	4970.00	4.54	39.42	15.24	5.09
5303.39	5273.39	4.35	44.52	16.07	3.30
5594.92	5564.92	4.53	45.25	16.55	2.15
5886.44	5856.44	5.22	47.16	17.07	1.77
6000.00	5970.00	5.01	40.82	17.08	1.74
6323.73	6293.73	4.46	37.37	17.40	1.73
6615.25	6585.25	4.28	34.74	17.53	1.64
6906.78	6876.78	4.30	34.56	17.94	1.59
7000.00	6970.00	4.29	34.69	18.21	1.55
7271.19	7241.19	4.28	32.95	18.54	1.40
7562.71	7532.71	4.48	30.79	18.69	1.25
7854.24	7824.24	4.94	31.13	19.25	1.13
7927.12	7897.12	5.07	31.80	19.44	1.10
8000.00	7970.00	5.20	32.79	19.74	1.08

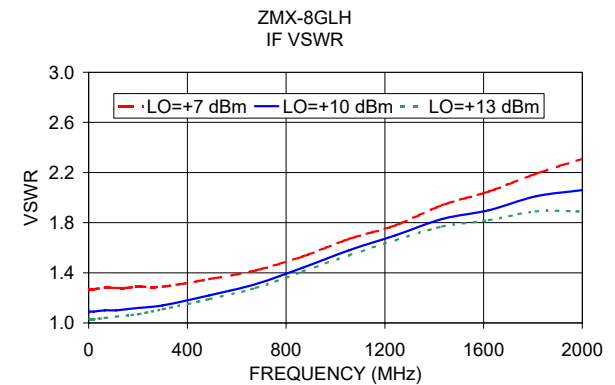
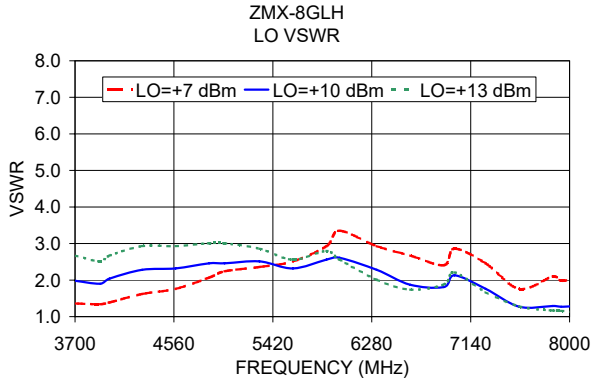
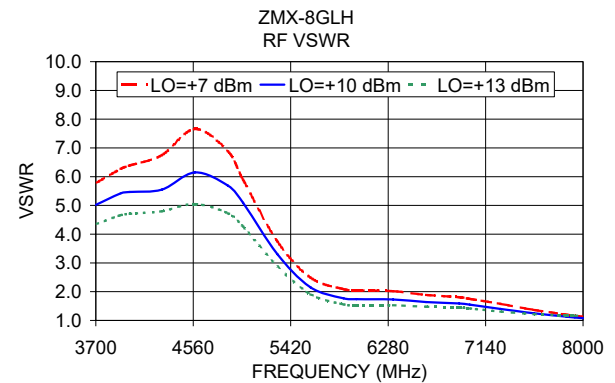
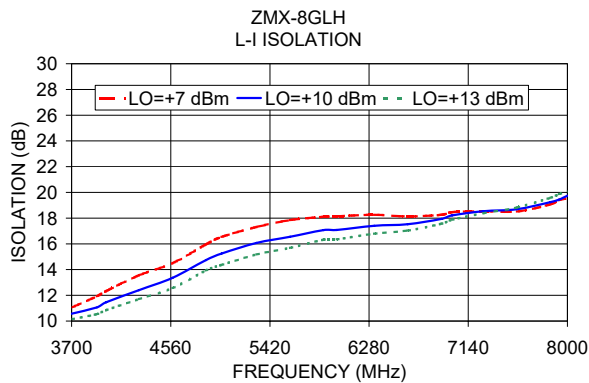
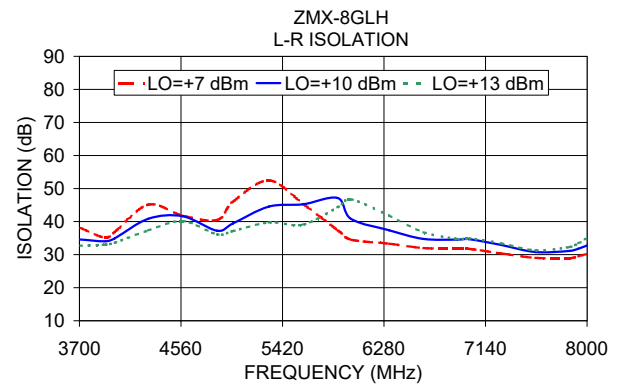
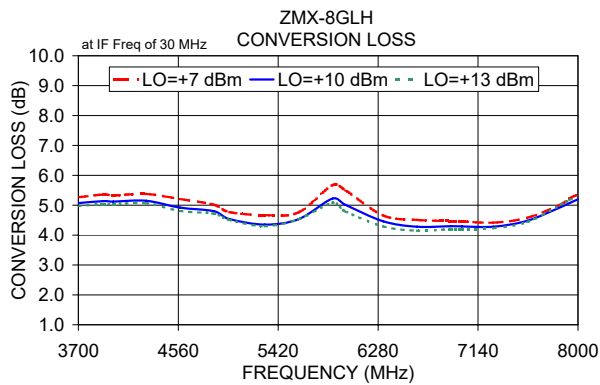
### Electrical Schematic



### Notes

- Performance and quality attributes and conditions not expressly stated in this specification document are intended to be excluded and do not form a part of this specification document.
- Electrical specifications and performance data contained in this specification document are based on Mini-Circuit's applicable established test performance criteria and measurement instructions.
- The parts covered by this specification document are subject to Mini-Circuits standard limited warranty and terms and conditions (collectively, "Standard Terms"); Purchasers of this part are entitled to the rights and benefits contained therein. For a full statement of the Standard Terms and the exclusive rights and remedies thereunder, please visit Mini-Circuits' website at [www.minicircuits.com/MCLStore/terms.jsp](http://www.minicircuits.com/MCLStore/terms.jsp)





**Notes**

- A. Performance and quality attributes and conditions not expressly stated in this specification document are intended to be excluded and do not form a part of this specification document.
- B. Electrical specifications and performance data contained in this specification document are based on Mini-Circuit's applicable established test performance criteria and measurement instructions.
- C. The parts covered by this specification document are subject to Mini-Circuit's standard limited warranty and terms and conditions (collectively, "Standard Terms"); Purchasers of this part are entitled to the rights and benefits contained therein. For a full statement of the Standard Terms and the exclusive rights and remedies thereunder, please visit Mini-Circuit's website at [www.minicircuits.com/MCLStore/terms.jsp](http://www.minicircuits.com/MCLStore/terms.jsp)

