

Power Splitter/Combiner

ZN12PD-17-S

12 Way-0° 50Ω 800 to 1700 MHz

Maximum Ratings

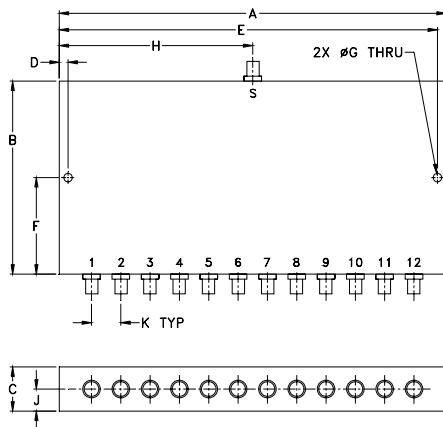
Operating Temperature	-55°C to 100°C
Storage Temperature	-55°C to 100°C
Power Input (as a splitter)	10W max.
Internal Dissipation	2W max.

Permanent damage may occur if any of these limits are exceeded.

Coaxial Connections

SUM PORT	S(COM)
PORT 1,2,3,.....,12	1,2,3,.....,12

Outline Drawing



Outline Dimensions (inch/mm)

A	B	C	D	E	F
6.60	3.28	.75	.150	6.45	1.64
167.64	83.31	19.05	3.81	163.83	41.66
G	H	J	K	wt	
.144	3.30	.38	.500	grams	
3.66	83.82	9.65	12.70	370	

Features

- low insertion loss, 0.45 dB typ.
- high isolation, 30 dB typ.
- excellent VSWR, 1.1:1 typ.
- excellent amplitude unbalance, 0.2 dB typ.
- up to 5W power output as splitter
- rugged shielded case

Applications

- instrumentation
- cellular
- PCN
- GPS
- satellite

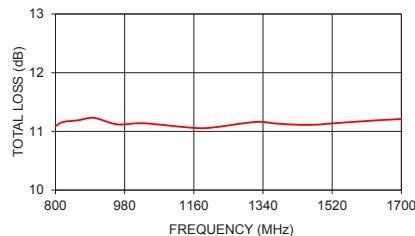
Electrical Specifications

FREQ. RANGE (MHz)	ISOLATION (dB)		INSERTION LOSS (dB) ABOVE 10.8 dB		PHASE UNBALANCE (Degrees)	AMPLITUDE UNBALANCE (dB)	VSWR (:1)			
	Typ.	Min.	Typ.	Max.			S Typ.	S Max.	OUT Typ.	OUT Max.
f_L - f_U					Max.	Max.	1.2	1.6	1.1	1.4
800-1700	30	18	0.45	1.2	14	0.7				

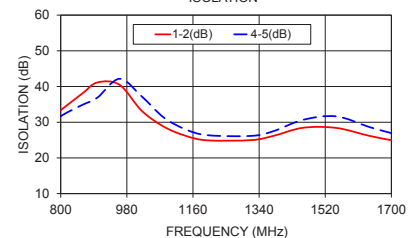
Typical Performance Data

Freq. (MHz)	Total Loss ¹ (dB)	Amplitude Unbalance (dB)	Isolation (dB)		Phase Unbalance (deg.)	VSWR S	VSWR 12
			1-2	4-5			
800.00	11.09	0.19	33.36	31.69	2.53	1.37	1.07
820.00	11.16	0.20	34.98	32.87	2.26	1.42	1.07
860.00	11.19	0.27	38.14	34.91	2.79	1.48	1.07
900.00	11.23	0.19	41.15	36.91	2.82	1.47	1.08
960.00	11.12	0.18	40.49	42.16	2.80	1.38	1.09
1020.00	11.14	0.14	33.25	37.29	2.91	1.25	1.10
1080.00	11.11	0.12	28.79	31.36	2.89	1.15	1.11
1140.00	11.07	0.11	26.19	28.00	3.13	1.14	1.11
1200.00	11.06	0.09	24.92	26.36	3.92	1.15	1.10
1320.00	11.16	0.12	25.00	26.18	4.11	1.15	1.09
1380.00	11.13	0.12	26.21	27.53	4.08	1.12	1.08
1460.00	11.11	0.18	28.45	30.68	4.06	1.04	1.08
1550.00	11.15	0.22	28.40	31.64	4.45	1.09	1.09
1640.00	11.19	0.21	26.18	28.65	4.61	1.18	1.08
1700.00	11.21	0.19	24.96	26.95	4.73	1.16	1.07

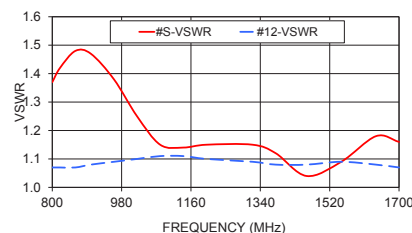
ZN12PD-17-S TOTAL LOSS



ZN12PD-17-S ISOLATION



ZN12PD-17-S VSWR



electrical schematic



Notes

- Performance and quality attributes and conditions not expressly stated in this specification document are intended to be excluded and do not form a part of this specification document.
- Electrical specifications and performance data contained in this specification document are based on Mini-Circuit's applicable established test performance criteria and measurement instructions.
- The parts covered by this specification document are subject to Mini-Circuit's standard limited warranty and terms and conditions (collectively, "Standard Terms"); Purchasers of this part are entitled to the rights and benefits contained therein. For a full statement of the Standard Terms and the exclusive rights and remedies thereunder, please visit Mini-Circuit's website at www.minicircuits.com/WCLStore/terms.jsp



CASE STYLE: UU589

Connectors	Model
SMA	ZN12PD-17-S

+RoHS Compliant

The +Suffix identifies RoHS Compliance. See our web site for RoHS Compliance methodologies and qualifications