

## Bias-Tee Coaxial

## ZNBT-60-1WR-1+

### Important Note

This model has been designed, built and tested in our engineering department. Performance data represents model capability. At present it is a non-catalog model. On request, we can supply a final specification sheet, part number and price/delivery information.

Please click "Back", and then click "Contact Us" for Applications support.



CASE STYLE : K558

ELECTRICAL SPECIFICATIONS 50Ω @ +25°C					
Parameter	Condition	Min.	Typ.	Max.	Units
Frequency	-	2.5	-	6000	MHz
Insertion Loss*	2.5-25 MHz	-	0.2	0.9	dB
	25-3000 MHz	-	0.6	2.0	dB
	3000-6000 MHz	-	1.6	3.2	dB
VSWR**	2.5-25 MHz	-	1.1	1.5	:1
	25-3000 MHz	-	1.1	1.3	:1
	3000-6000 MHz	-	1.35	1.6	:1
Isolation* RF to DC Port, RF&DC to DC Port	2.5-25 MHz	45	75	-	dB
	25-3000 MHz	25	45	-	dB
	3000-6000 MHz	20	35	-	dB

\* Insertion Loss and Isolation are guaranteed up to 20 dBm-RF power and 200mA DC current. \*\* VSWR measured with open and short at DC port.

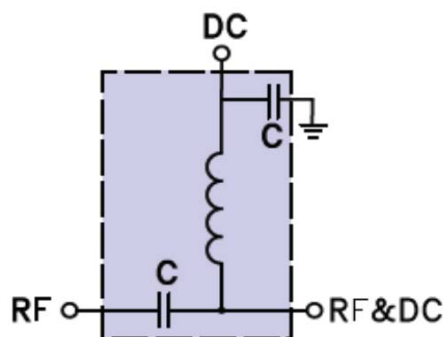
MAXIMUM RATINGS	
Operating Temperature	-55°C to 100°C
Storage Temperature	-55°C to 100°C
Max current no damage	500 mA
Max DC Voltage no damage	30 V
Max RF Power no damage	1 W

Permanent damage may occur if any of these limits are exceeded.

COAXIAL CONNECTIONS	
RF	2 (N Female)
RF & DC	1 (N Male)
DC	3 (BNC Female)

Case style size	1.25" X 1.25" X 0.94"
-----------------	-----------------------

### Electrical Schematic



**+RoHS Compliant**

The +Suffix identifies RoHS Compliance. See our web site for RoHS Compliance methodologies and qualifications

