

Coaxial Frequency Mixer

Level 13 (LO Power +13 dBm) 0.15 to 400 MHz

ZP-3MH+



Generic photo used for illustration purposes only

CASE STYLE: GG60

Connectors	Model
BNC	ZP-3MH+
SMA	ZP-3MH-S+

+RoHS Compliant

The +Suffix identifies RoHS Compliance. See our web site for RoHS Compliance methodologies and qualifications

Maximum Ratings

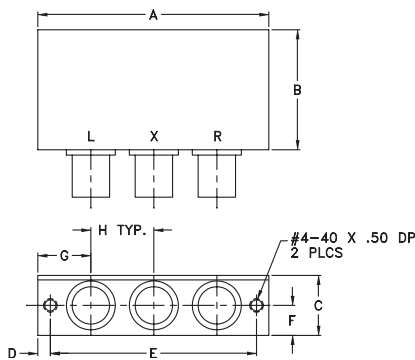
Operating Temperature	-55°C to 100°C
Storage Temperature	-55°C to 100°C
RF Power	200mW
IF Current	40mA

Permanent damage may occur if any of these limits are exceeded.

Coaxial Connections

LO	L
RF	R
IF	X

Outline Drawing



Outline Dimensions (inch/mm)

A	B	C	D	E	F	G	H	wt
2.31	1.20	.60	.125	2.062	.30	.53	.63	grams
58.67	30.48	15.24	3.18	52.37	7.62	13.46	16.00	75.0

Features

- low conversion loss, 5.0 dB typ.
- high L-R isolation, 46 dB typ., L-I, 42 dB typ.
- rugged shielded case

Applications

- VHF/UHF
- instrumentation

Electrical Specifications

FREQUENCY (MHz)		CONVERSION LOSS (dB)				LO-RF ISOLATION (dB)						LO-IF ISOLATION (dB)					
LO/RF f_L - f_U	IF	Mid-Band m		Total Range Max.	8.0	L		M		U		L		M		U	
		\bar{X}	σ			Typ.	Min.	Typ.	Min.	Typ.	Min.	Typ.	Min.	Typ.	Min.	Typ.	Min.
0.15-400	DC-400	5.0	0.33	7.0	8.0	60	50	46	30	35	25	60	40	42	25	35	20

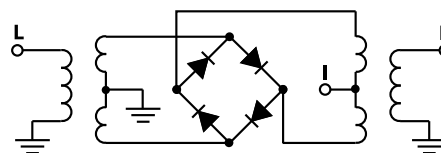
1 dB COMP.: +9 dBm typ.

L = low range [f_L to $10 f_L$] M = mid range [$10 f_L$ to $f_U/2$] U = upper range [$f_U/2$ to f_U]
m = mid band [$2f_L$ to $f_U/2$]

Typical Performance Data

Frequency (MHz)		Conversion Loss (dB)	VSWR RF Port (:1)	Frequency (MHz)	Isolation L-R (dB)	Isolation L-I (dB)	VSWR LO Port (:1)
RF	LO	LO +13dBm	LO +13dBm	LO	LO +13dBm	LO +13dBm	LO +13dBm
0.15	30.15	5.48	1.53	10.50	59.22	67.83	1.72
0.20	30.20	5.31	1.45	14.50	57.31	65.51	1.71
0.30	30.30	5.27	1.39	18.50	55.80	63.82	1.71
0.40	30.40	5.21	1.37	22.50	54.49	62.93	1.69
0.50	30.50	5.16	1.36	26.50	53.38	61.95	1.70
1.00	31.00	5.09	1.35	30.50	52.42	61.07	1.69
5.00	35.00	4.99	1.34	31.00	52.30	61.12	1.68
10.00	40.00	4.96	1.34	35.10	51.52	60.51	1.68
20.00	50.00	4.88	1.33	40.10	50.70	60.05	1.68
50.10	80.10	4.93	1.32	50.10	49.38	59.05	1.68
75.10	105.10	4.98	1.30	55.10	48.79	58.41	1.68
100.10	130.10	4.99	1.27	105.10	44.38	48.52	1.69
150.10	180.10	5.05	1.21	130.10	42.61	44.85	1.71
200.10	230.10	5.17	1.13	180.10	40.40	39.44	1.75
250.10	280.10	5.36	1.06	205.10	38.48	37.29	1.80
300.10	330.10	5.43	1.10	255.10	37.59	35.97	1.86
325.10	355.10	5.57	1.14	305.10	37.44	32.99	1.94
350.10	380.10	5.68	1.12	330.10	36.46	31.87	1.97
375.10	405.10	6.04	1.09	380.10	35.06	30.61	2.12
400.10	430.10	6.39	1.18	405.10	35.05	29.79	2.17

Electrical Schematic



Notes

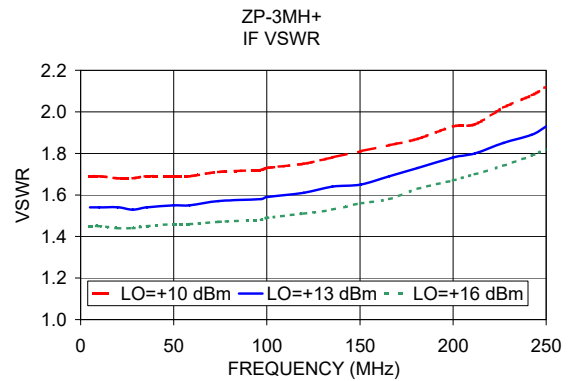
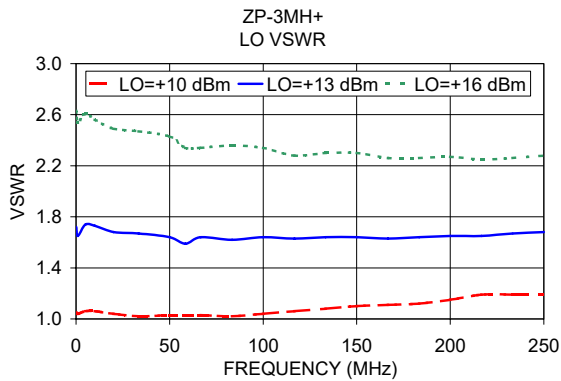
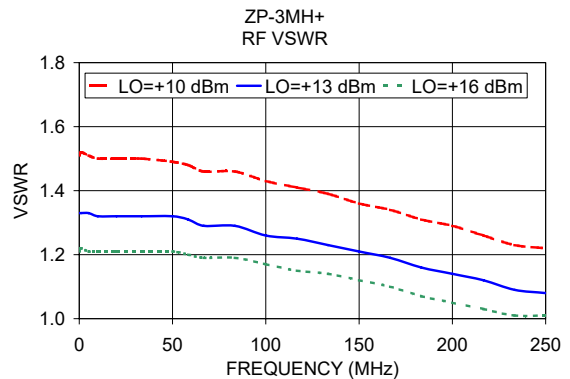
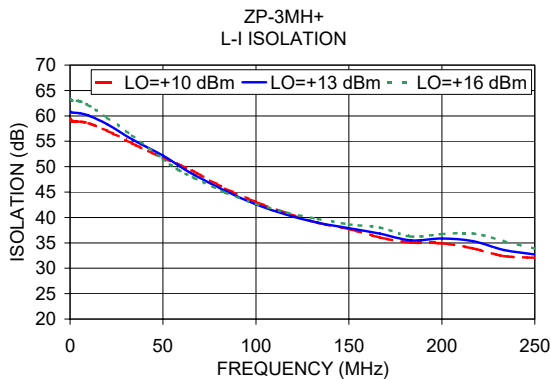
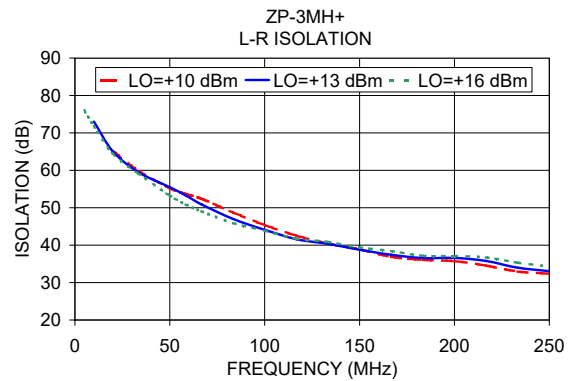
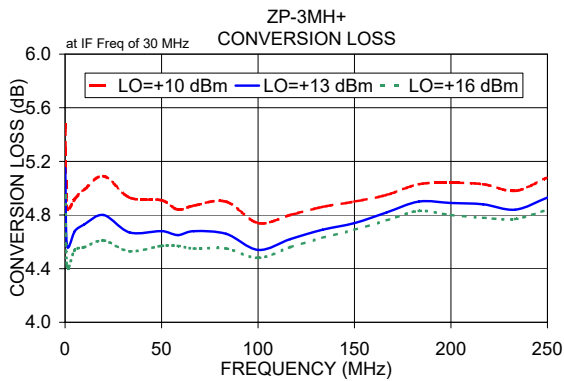
- Performance and quality attributes and conditions not expressly stated in this specification document are intended to be excluded and do not form a part of this specification document.
- Electrical specifications and performance data contained in this specification document are based on Mini-Circuit's applicable established test performance criteria and measurement instructions.
- The parts covered by this specification document are subject to Mini-Circuit's standard limited warranty and terms and conditions (collectively, "Standard Terms"); Purchasers of this part are entitled to the rights and benefits contained therein. For a full statement of the Standard Terms and the exclusive rights and remedies thereunder, please visit Mini-Circuit's website at www.minicircuits.com/WCLStore/terms.jsp



www.minicircuits.com P.O. Box 350166, Brooklyn, NY 11235-0003 (718) 934-4500 sales@minicircuits.com

REV. D
M151107
ZP-3MH+
DJ/TD/CP/AM
200601

Page 1 of 2



Notes

- A. Performance and quality attributes and conditions not expressly stated in this specification document are intended to be excluded and do not form a part of this specification document.
- B. Electrical specifications and performance data contained in this specification document are based on Mini-Circuit's applicable established test performance criteria and measurement instructions.
- C. The parts covered by this specification document are subject to Mini-Circuits standard limited warranty and terms and conditions (collectively, "Standard Terms"); Purchasers of this part are entitled to the rights and benefits contained therein. For a full statement of the Standard Terms and the exclusive rights and remedies thereunder, please visit Mini-Circuits' website at www.minicircuits.com/MCLStore/terms.jsp

