



Rear Panel

ZT-161RS 1200-1650 MHz GPS Distribution Module with 16 Output Channels

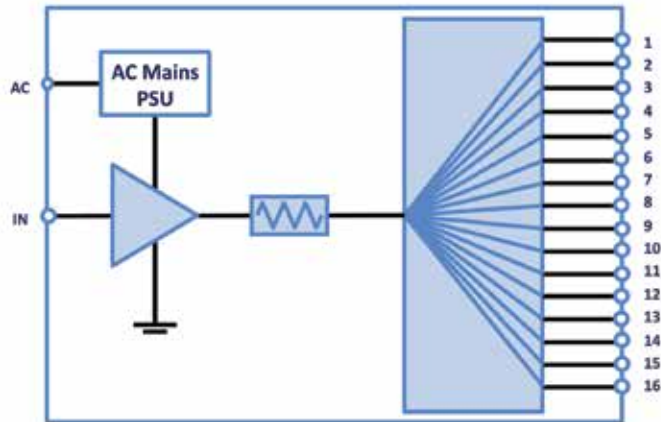
Functional Description

ZT-161RS is an essential component of lab and production test systems for GNSS (global navigation satellite system) applications, allowing a single, low-level test signal to be amplified and distributed among 16 systems under test. The amplifier is housed in a compact 2u package and optimized to cover the key international GNSS bands, including GPS, Galileo and GLONASS.

Electrical Performance

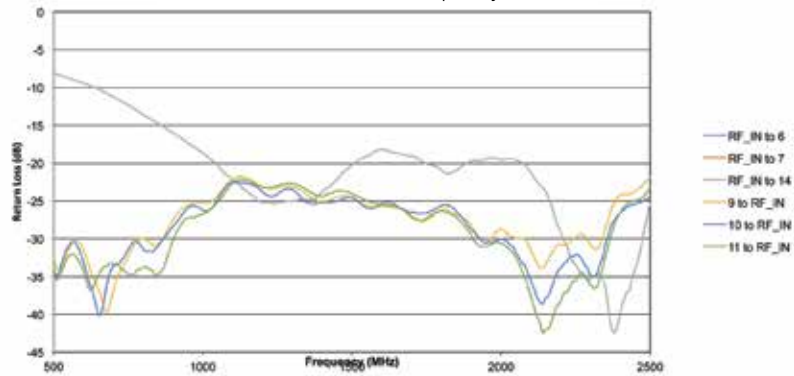
PARAMETER	SPECIFICATIONS			
	Unit	Min.	Typ.	Max.
Operating Frequency	MHz	1200	-	1650
RF Input Power	dBm	-	-	-25
Signal Gain (each path)	dB	20	-	-
Return Loss	dB	-	15	-

Functional Schematic



ZT-161RS Curves

Return Loss vs. Frequency



Isolation vs. Frequency

