

Cavity Bandpass Filters

50Ω DC to 15 GHz



The Big Deal

- Very low insertion loss with excellent power handling
- Very fast roll-off with wide stopband
- Passbands up to 15 GHz
- Stopbands up to 20 GHz

Product Overview

Mini-Circuits' cavity filters are designed by implementing resonant structures with very high Q and are ideal for narrow-band, high-selectivity applications. These designs can provide bandwidths as narrow as 1% with very high selectivity and excellent low noise floor. Low insertion loss combined with excellent power handling makes them well-suited for transmitter and receiver front end. Advanced filter design and construction enables stopband width greater than 3x the center frequency.

Mini-Circuits' cavity filters feature a special protective assembly to prevent accidental de-tuning that would otherwise require expensive replacement or return to factory for re-tuning. Custom integrated assembly with LNA and bias tees results in greatly simplifying system integration. Precise machining allows realization of cavity filters with small form factors for applications where size is critical. Excellent repeatability across units is achieved through precise tuning and process control.

Key Features

Feature	Advantages
Low insertion loss	Low signal loss results in better SNR in receiver front end and better power delivery to antenna in transmitter
Fast roll-off	Higher selectivity results in better adjacent channel rejection and dynamic range
Wide stopband	Wide spur free band results in better receiver sensitivity
High power handling	Well suited for transmitter application
Protective assembly	Prevents accidental de-tuning of precisely tuned resonant circuit

Notes

- A. Performance and quality attributes and conditions not expressly stated in this specification document are intended to be excluded and do not form a part of this specification document.
B. Electrical specifications and performance data contained in this specification document are based on Mini-Circuit's applicable established test performance criteria and measurement instructions.
C. The parts covered by this specification document are subject to Mini-Circuits standard limited warranty and terms and conditions (collectively, "Standard Terms"); Purchasers of this part are entitled to the rights and benefits contained therein. For a full statement of the Standard Terms and the exclusive rights and remedies thereunder, please visit Mini-Circuits' website at www.minicircuits.com/MCLStore/terms.jsp



Cavity Bandpass Filter

ZVBP-2300A+

50Ω 2200 to 2400 MHz



CASE STYLE: QJ2293

Connectors SMA-F Model ZVBP-2300A-S+

Features

- Low insertion loss, 0.5 dB typical
- Broad stopband performance up to 8 GHz
- Fast roll-off
- Connectorized package
- Small size

Applications

- Fixed and mobile communication network
- Satellite communication

Electrical Specifications at 25°C

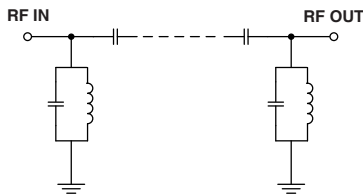
Parameter	F#	Frequency (MHz)	Min.	Typ.	Max.	Unit
Pass Band	Center Frequency	-	-	2300	-	MHz
	Insertion Loss	F1-F2	2200-2400	0.5	1.0	dB
	VSWR	F1-F2	2200-2400	1.34	1.5	:1
Stop Band, Lower	Insertion Loss	DC-F3	DC - 2000	40	-	dB
	VSWR	DC-F3	DC - 2000	20	-	:1
Stop Band, Upper	Insertion Loss	F4-F5	2550-8050	40	-	dB
	VSWR	F4-F5	2550-8050	20	-	:1

Maximum Ratings

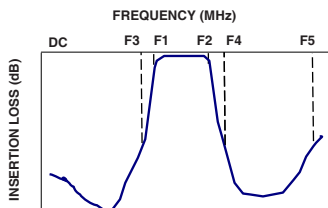
Operating Temperature	-40°C to 85°C
Storage Temperature	-55°C to 100°C
RF Power Input	15 W

Permanent damage may occur if any of these limits are exceeded.

Functional Schematic



Typical Frequency Response

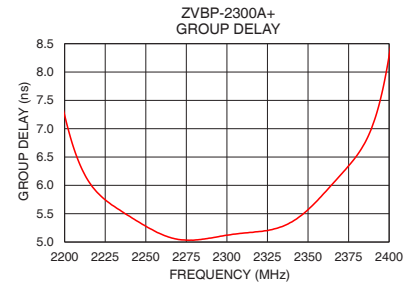
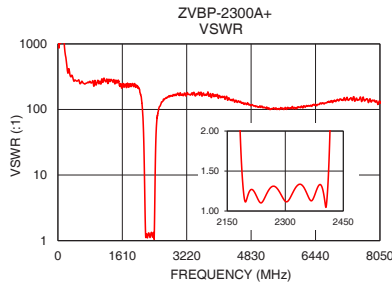
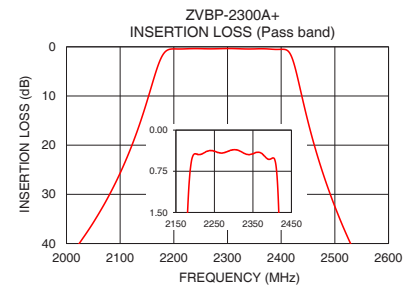
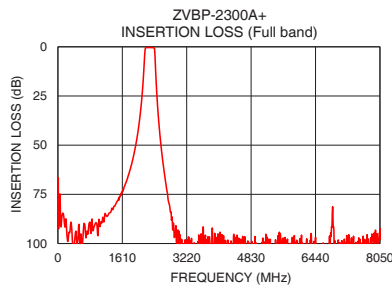


Typical Performance Data at 25°C

Frequency (MHz)	Insertion Loss (dB)	VSWR (:1)	Frequency (MHz)	Group Delay (nsec)
10	86.50	1267.87	2200	7.16
750	95.14	153.79	2210	6.29
1500	78.13	200.40	2220	5.82
2000	43.00	205.06	2230	5.56
2080	29.68	152.29	2240	5.37
2120	20.20	88.14	2250	5.20
2150	10.80	26.04	2260	5.06
2173	3.03	4.41	2270	4.97
2200	0.41	1.08	2280	4.95
2300	0.36	1.16	2290	4.97
2400	0.51	1.25	2300	5.01
2427	3.13	4.19	2310	5.05
2440	8.59	14.64	2320	5.08
2460	17.28	44.88	2330	5.12
2500	30.68	85.27	2340	5.22
2550	43.01	110.53	2350	5.41
3000	98.20	163.61	2360	5.67
5000	110.38	128.71	2370	5.97
7500	101.76	168.79	2380	6.29
8050	100.39	146.28	2400	7.64

+RoHS Compliant

The +Suffix identifies RoHS Compliance. See our web site for RoHS Compliance methodologies and qualifications



Notes

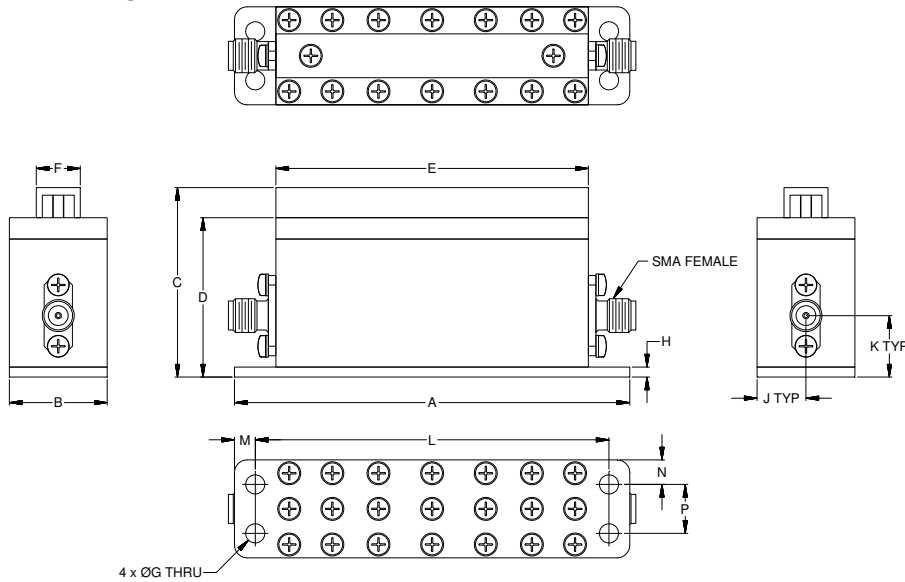
- Performance and quality attributes and conditions not expressly stated in this specification document are intended to be excluded and do not form a part of this specification document.
- Electrical specifications and performance data contained in this specification document are based on Mini-Circuit's applicable established test performance criteria and measurement instructions.
- The parts covered by this specification document are subject to Mini-Circuits standard limited warranty and terms and conditions (collectively, "Standard Terms"); Purchasers of this part are entitled to the rights and benefits contained therein. For a full statement of the Standard Terms and the exclusive rights and remedies thereunder, please visit Mini-Circuits' website at www.minicircuits.com/MCLStore/terms.jsp



Coaxial Connections

PORT - 1	SMA-FEMALE
PORT - 2	SMA-FEMALE

Outline Drawing



Outline Dimensions ($\frac{\text{inch}}{\text{mm}}$)

A	B	C	D	E	F	G	H
3.10	.77	1.49	1.25	2.45	.34	.150	.08
78.81	19.50	37.75	31.75	62.30	8.75	3.81	2.00
J	K	L	M	N	P	Wt.	
.38	.48	2.778	.16	.19	.384	grams	
9.75	12.25	70.55	4.13	4.87	9.75	120	

Notes

- A. Performance and quality attributes and conditions not expressly stated in this specification document are intended to be excluded and do not form a part of this specification document.
 B. Electrical specifications and performance data contained in this specification document are based on Mini-Circuit's applicable established test performance criteria and measurement instructions.
 C. The parts covered by this specification document are subject to Mini-Circuits standard limited warranty and terms and conditions (collectively, "Standard Terms"); Purchasers of this part are entitled to the rights and benefits contained therein. For a full statement of the Standard Terms and the exclusive rights and remedies thereunder, please visit Mini-Circuits' website at www.minicircuits.com/MCLStore/terms.jsp

