

Cavity Bandpass Filters

50Ω DC to 50 GHz



The Big Deal

- Very low insertion loss with excellent power handling
- Very fast roll-off with wide stopband
- Passbands up to 36 GHz
- Stopbands up to 50 GHz

Product Overview

Mini-Circuits' cavity filters are designed by implementing resonant structures with very high Q and are ideal for narrow-band, high-selectivity applications. These designs can provide bandwidths as narrow as 1% with very high selectivity and excellent low noise floor. Low insertion loss combined with excellent power handling makes them well-suited for transmitter and receiver front end. Advanced filter design and construction enables stopband width greater than 3x the center frequency.

Mini-Circuits' cavity filters feature a special protective assembly to prevent accidental de-tuning that would otherwise require expensive replacement or return to factory for re-tuning. Precise machining allows realization of cavity filters with small form factors for applications where size is critical. Excellent repeatability across units is achieved through precise tuning and process control.

Key Features

Feature	Advantages
Low insertion loss	Low signal loss results in better SNR in receiver front end and better power delivery to antenna in transmitter
Fast roll-off	Higher selectivity results in better adjacent channel rejection and dynamic range
Wide stopband	Wide spur free band results in better receiver sensitivity
High power handling	Well suited for transmitter application
Protective assembly	Prevents accidental de-tuning of precisely tuned resonant circuit

Notes

- A. Performance and quality attributes and conditions not expressly stated in this specification document are intended to be excluded and do not form a part of this specification document.
B. Electrical specifications and performance data contained in this specification document are based on Mini-Circuit's applicable established test performance criteria and measurement instructions.
C. The parts covered by this specification document are subject to Mini-Circuits standard limited warranty and terms and conditions (collectively, "Standard Terms"); Purchasers of this part are entitled to the rights and benefits contained therein. For a full statement of the Standard Terms and the exclusive rights and remedies thereunder, please visit Mini-Circuits' website at www.minicircuits.com/MCLStore/terms.jsp



Cavity Bandpass Filter

ZVBP-7100-S+

50Ω 7025 to 7175 MHz



Generic photo used for illustration purposes only

CASE STYLE: SK2596

Connectors	Model
SMA-F	ZVBP-7100-S+

Electrical Specifications at 25°C

Parameter	F#	Frequency (MHz)	Min.	Typ.	Max.	Unit	
Pass Band	Center Frequency	-	-	7100	-	MHz	
	Insertion Loss	F1-F2	7025 - 7175	-	3.0	3.5	dB
	VSWR	F1-F2	7025 - 7175	-	1.29	1.5	:1
Stop Band, Lower	Insertion Loss	DC-F3	DC - 6910	70	80	-	dB
		F3-F4	6910 - 6990	-	36	-	dB
	VSWR	DC-F4	DC - 6990	-	20	-	:1
Stop Band, Upper	Insertion Loss	F5-F6	7224 - 7385	-	35	-	dB
		F6-F7	7385 - 14000	70	80	-	dB
	VSWR	F5-F7	7224 - 14000	-	20	-	:1

Maximum Ratings

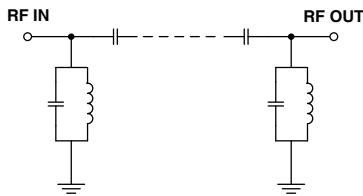
Operating Temperature	-40°C to 85°C
Storage Temperature	-55°C to 100°C
RF Power Input	3W Max.

Permanent damage may occur if any of these limits are exceeded. Input and output ports are DC short to ground.

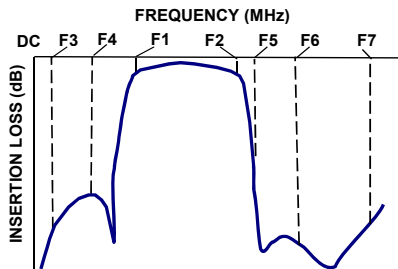
Typical Performance Data at 25°C

Frequency (MHz)	Insertion Loss (dB)	VSWR (:1)	Frequency (MHz)	Group Delay (nsec)
100	93.76	868.59	7025	21.47
2000	104.37	157.93	7040	16.81
6910	85.42	86.86	7030	19.46
6990	40.49	20.22	7040	16.81
6993	34.59	17.22	7050	15.05
6994	32.63	16.11	7060	14.13
6999	22.67	10.75	7100	12.38
7005	10.64	4.14	7080	12.81
7015	3.17	1.09	7090	12.58
7025	2.36	1.30	7100	12.38
7100	1.39	1.20	7110	12.28
7175	2.00	1.30	7120	12.48
7188	4.01	2.03	7130	12.80
7200	16.28	11.31	7140	13.16
7206	22.73	16.41	7150	13.82
7216	32.00	23.18	7160	15.05
7224	38.38	28.03	7165	15.94
7385	105.78	115.81	7168	16.57
10000	114.97	124.09	7170	17.04
14000	104.63	96.51	7175	18.54

Functional Schematic

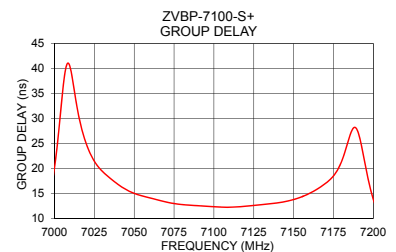
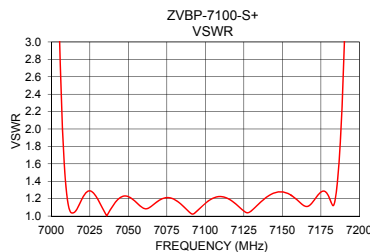
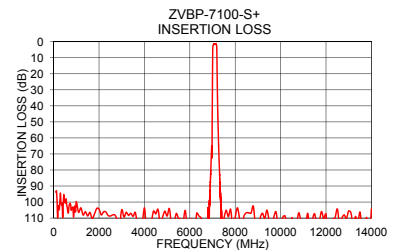
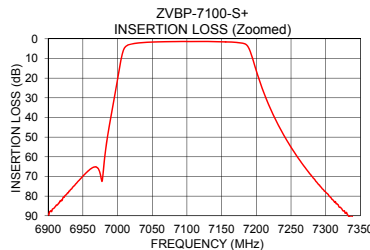


Typical Frequency Response



+RoHS Compliant

The +Suffix identifies RoHS Compliance. See our web site for RoHS Compliance methodologies and qualifications



Notes

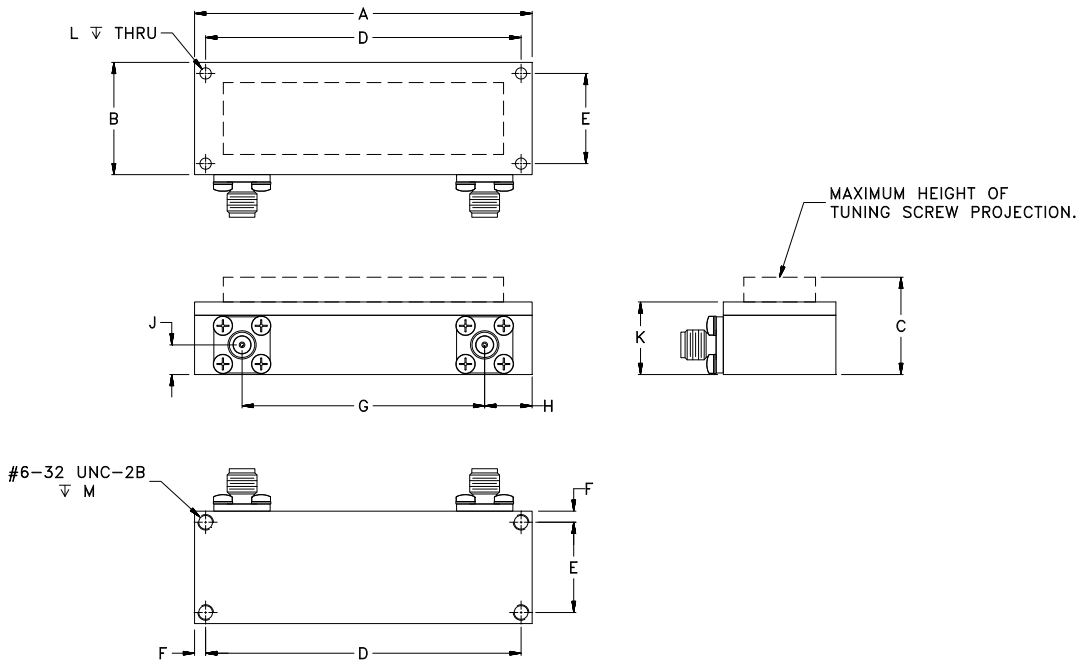
- Performance and quality attributes and conditions not expressly stated in this specification document are intended to be excluded and do not form a part of this specification document.
- Electrical specifications and performance data contained in this specification document are based on Mini-Circuit's applicable established test performance criteria and measurement instructions.
- The parts covered by this specification document are subject to Mini-Circuits standard limited warranty and terms and conditions (collectively, "Standard Terms"); Purchasers of this part are entitled to the rights and benefits contained therein. For a full statement of the Standard Terms and the exclusive rights and remedies thereunder, please visit Mini-Circuits' website at www.minicircuits.com/MCLStore/terms.jsp



Coaxial Connections

PORT 1	SMA-FEMALE
PORT 2	SMA-FEMALE

Outline Drawing



Outline Dimensions ($\frac{\text{inch}}{\text{mm}}$)

A	B	C	D	E	F	G
3.00	1.00	.87	2.803	.803	.10	2.16
76.20	25.40	22.00	71.20	20.40	2.50	54.76
H	J	K	L	M		Wt.
.42	.26	.67	.100	.276		grams
10.72	6.70	17.00	2.54	7.00		250

Note: Please refer to case style drawing for details

Notes

- A. Performance and quality attributes and conditions not expressly stated in this specification document are intended to be excluded and do not form a part of this specification document.
- B. Electrical specifications and performance data contained in this specification document are based on Mini-Circuit's applicable established test performance criteria and measurement instructions.
- C. The parts covered by this specification document are subject to Mini-Circuits standard limited warranty and terms and conditions (collectively, "Standard Terms"); Purchasers of this part are entitled to the rights and benefits contained therein. For a full statement of the Standard Terms and the exclusive rights and remedies thereunder, please visit Mini-Circuits' website at www.minicircuits.com/MCLStore/terms.jsp

