

Up Converter Frequency Mixer

ZX05-U432H-S+

Level 17 (LO Power +17 dBm) 0.1 to 3900 MHz



Generic photo used for illustration purposes only

CASE STYLE: FL905

Connectors	Model
SMA	ZX05-U432H-S+

+RoHS Compliant

The +Suffix identifies RoHS Compliance. See our web site for RoHS Compliance methodologies and qualifications

Maximum Ratings

Operating Temperature	-40°C to 85°C
Storage Temperature	-55°C to 100°C
IF Power	100mW
Permanent damage may occur if any of these limits are exceeded.	

Coaxial Connections

LO	3
IF (IN)	1
RF (OUT)	2

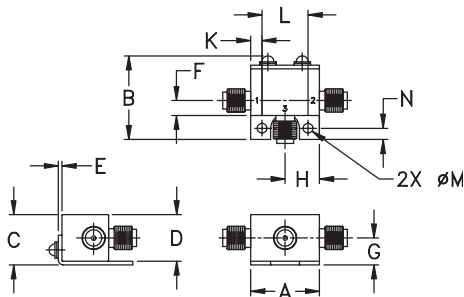
Features

- up converter mixer
- low conversion loss, 7.5 dB typ.
- high IP3, 26 dB typ.
- rugged construction
- small size
- protected by US patents, 6,790,049 and 7,027,795

Applications

- WIMAX
- wide band receivers

Outline Drawing



Outline Dimensions (inch / mm)

A	B	C	D	E	F	G
.74	.90	.54	.50	.04	.16	.29
18.80	22.86	13.72	12.70	1.02	4.06	7.37

H	J	K	L	M	N	wt
.37	--	.122	.496	.106	.122	grams
9.40	--	3.10	12.60	2.69	3.10	20.0

Electrical Specifications

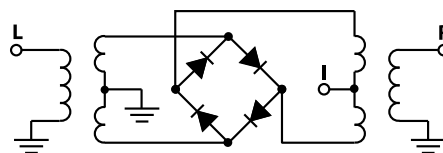
FREQUENCY (MHz)			CONVERSION LOSS* (dB)			LO-IF (IN) ISOLATION (dB)		LO-RF (OUT) ISOLATION (dB)		IP3 at center band (dBm)
IF (IN)	LO	RF (OUT)	Typ.	σ^{**}	Max.	Typ.	Min.	Typ.	Min.	Typ.
0.1-800	1100-4250	1100-3900	7.5	0.2	9.8	24	13	35	26	26

1 dB COMPR. +14 dBm typ.
* Conversion Loss at 30 MHz IF
** σ is a standard deviation

Typical Performance Data

Frequency (MHz)			Conversion Loss (dB)	Isolation L-I (dB)	Isolation L-R (dB)	VSWR RF (OUT) Port (:1)	VSWR LO Port (:1)
IF (IN)	LO	RF (OUT)	LO +17dBm	LO +17dBm	LO +17dBm	LO +17dBm	LO +17dBm
30.00	1110.10	1080.10	5.87	16.85	43.45	2.00	1.82
30.00	1210.10	1180.10	5.54	16.93	41.98	2.34	2.00
30.00	1410.10	1380.10	5.72	19.09	41.68	2.68	2.35
30.00	1590.10	1560.10	5.92	22.40	34.55	2.45	2.54
30.00	1690.10	1660.10	6.33	23.52	36.11	2.58	2.57
30.00	1870.10	1840.10	6.61	28.49	37.13	2.13	2.62
30.00	2050.10	2020.10	6.75	39.92	36.77	1.40	2.49
30.00	2230.10	2200.10	7.31	38.90	41.79	1.55	2.42
30.00	2410.10	2380.10	6.70	35.55	36.50	2.35	1.90
30.00	2490.10	2460.10	7.17	32.90	35.94	2.31	1.90
30.00	2670.10	2640.10	7.43	27.66	36.16	3.87	1.49
30.00	2850.10	2820.10	7.24	22.55	31.49	3.50	1.26
30.00	2950.10	2920.10	6.76	23.39	32.11	2.68	1.05
30.00	3030.10	3000.10	6.31	23.71	30.81	2.34	1.09
30.00	3210.10	3180.10	6.03	26.80	33.00	2.63	1.35
30.00	3490.10	3460.10	6.50	25.83	30.89	2.01	1.63
30.00	3670.10	3640.10	6.86	24.76	29.44	1.93	1.93
30.00	3850.10	3820.10	7.23	27.98	29.14	2.22	2.47
30.00	4030.10	4000.10	8.19	29.33	30.14	3.37	2.96
30.00	4290.10	4260.10	9.02	27.06	31.38	4.26	3.37

Electrical Schematic



Notes

- Performance and quality attributes and conditions not expressly stated in this specification document are intended to be excluded and do not form a part of this specification document.
- Electrical specifications and performance data contained in this specification document are based on Mini-Circuit's applicable established test performance criteria and measurement instructions.
- The parts covered by this specification document are subject to Mini-Circuits standard limited warranty and terms and conditions (collectively, "Standard Terms"); Purchasers of this part are entitled to the rights and benefits contained therein. For a full statement of the Standard Terms and the exclusive rights and remedies thereunder, please visit Mini-Circuits' website at www.minicircuits.com/MCLStore/terms.jsp

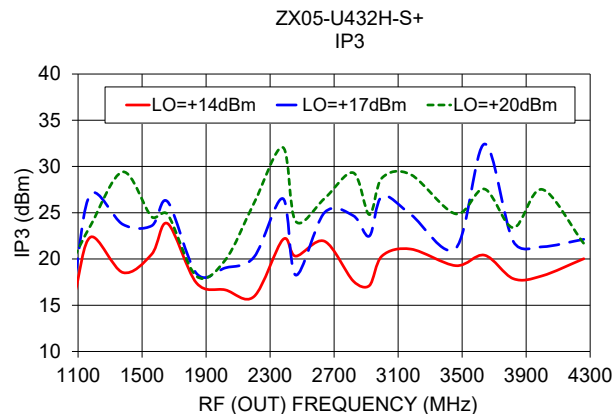
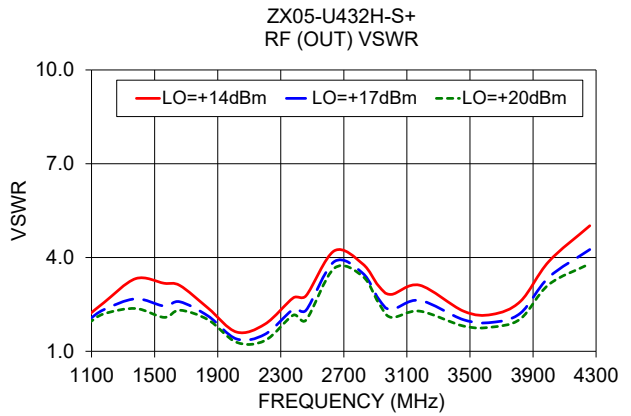
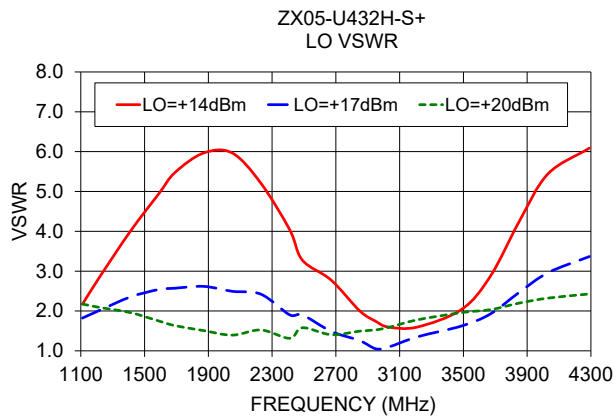
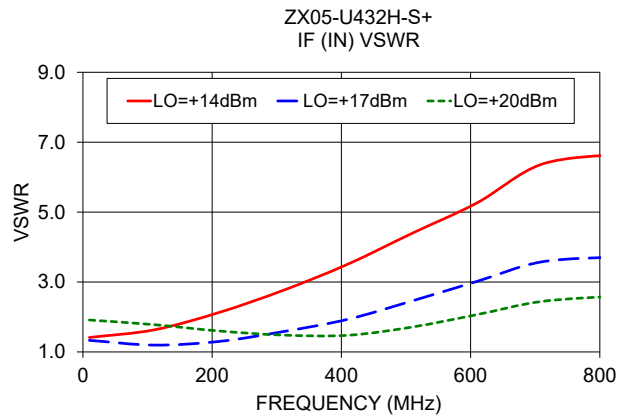
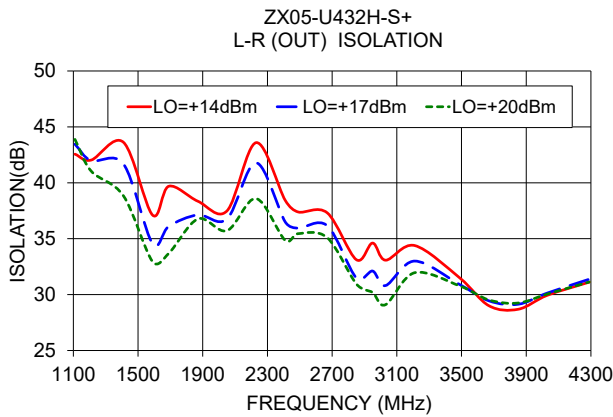
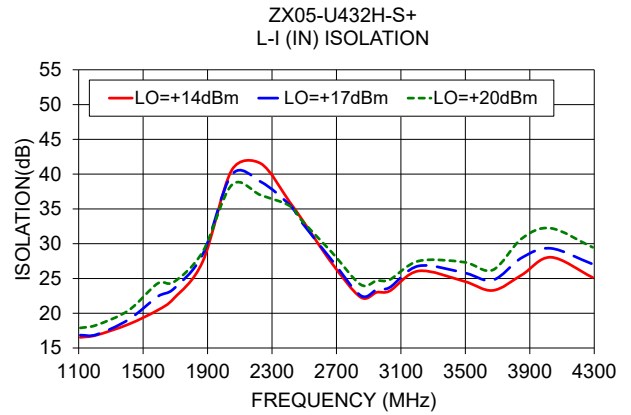
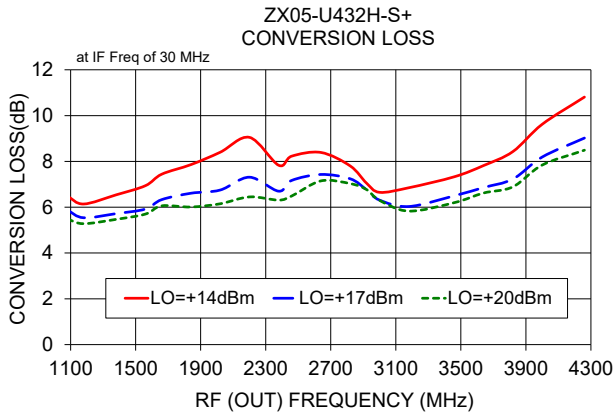
Mini-Circuits®

www.minicircuits.com P.O. Box 350166, Brooklyn, NY 11235-0003 (718) 934-4500 sales@minicircuits.com

REV. B
M171494
ZX05-U432H-S-
DJ/CP/AM
200811
Page 1 of 2

Performance Charts

ZX05-U432H-S+



Notes

- A. Performance and quality attributes and conditions not expressly stated in this specification document are intended to be excluded and do not form a part of this specification document.
- B. Electrical specifications and performance data contained in this specification document are based on Mini-Circuit's applicable established test performance criteria and measurement instructions.
- C. The parts covered by this specification document are subject to Mini-Circuits standard limited warranty and terms and conditions (collectively, "Standard Terms"); Purchasers of this part are entitled to the rights and benefits contained therein. For a full statement of the Standard Terms and the exclusive rights and remedies thereunder, please visit Mini-Circuits' website at www.minicircuits.com/MCLStore/terms.jsp

