

Coaxial

# Low Noise Amplifier

## ZX60-33LN-S+

50Ω

50 to 3000 MHz

### Features

- wide bandwidth, 50 to 3000 MHz
- low noise figure 1.1 dB typ.
- output power, up to 17.5 dBm typ.
- protected by US patent 6,790,049

### Applications

- front-end amplifier
- cellular
- GPS
- bluetooth
- lab
- instrumentation
- test equipment



Case Style: GC957	
Connectors	Model
SMA	ZX60-33LN-S+

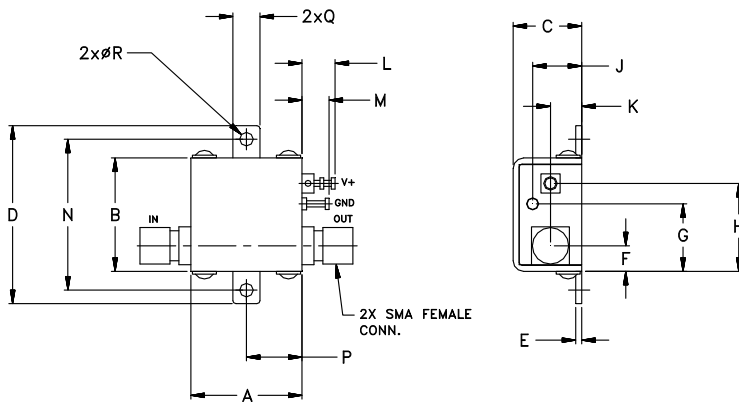
**+RoHS Compliant**  
The +Suffix identifies RoHS Compliance. See our web site for RoHS Compliance methodologies and qualifications

### Electrical Specifications at 25°C

Parameter	Condition(MHz)	Min	Typ.	Max.	Units
Frequency	—	50	—	3000	MHz
Noise Figure (Note 1)	—	—	1.1	1.9	dB
Gain	100	—	21.9	—	dB
	1000	—	18.8	—	
	2000	13	14.5	—	
	3000	—	11.9	—	
Gain Flatness	—	—	—	—	dB
Output Power at 1dB compression	—	14.5	16.5	—	dBm
Output third order intercept point	—	—	+32	—	dBm
Input VSWR	—	—	2.0	—	:1
Output VSWR	—	—	1.6	—	:1
Active Directivity	—	—	—	—	dB
DC Supply Voltage	—	—	5	—	V
Supply Current	—	—	70	80	mA

Note 1: 2.3 dB max from 50 to 100 MHz

### Outline Drawing



**!** NOTE: When soldering the DC connections, caution must be used to avoid overheating the DC terminal. See Application Note. [AN-40-010](#).

### Maximum Ratings

Parameter	Ratings
Operating Temperature	-40°C to 85°C Case
Storage Temperature	-55°C to 100°C
DC Voltage	5.5 V
Input RF Power (no damage)	+13 dBm
Power Dissipation	0.44W

Permanent damage may occur if any of these limits are exceeded.

### Outline Dimensions (inch/mm)

A	B	C	D	E	F	G	H	J	K	L	M	N	P	Q	R	wt
.74	.75	.46	1.18	.04	.17	.45	.59	.33	.21	.22	.18	1.00	.37	.18	.106	grams
18.80	19.05	11.68	29.97	1.02	4.32	11.43	14.99	8.38	5.33	5.59	4.57	25.40	9.40	4.57	2.69	23.0

### Notes

- Performance and quality attributes and conditions not expressly stated in this specification document are intended to be excluded and do not form a part of this specification document.
- Electrical specifications and performance data contained in this specification document are based on Mini-Circuit's applicable established test performance criteria and measurement instructions.
- The parts covered by this specification document are subject to Mini-Circuits standard limited warranty and terms and conditions (collectively, "Standard Terms"); Purchasers of this part are entitled to the rights and benefits contained therein. For a full statement of the Standard Terms and the exclusive rights and remedies thereunder, please visit Mini-Circuits' website at [www.minicircuits.com/MCLStore/terms.jsp](http://www.minicircuits.com/MCLStore/terms.jsp)



[www.minicircuits.com](http://www.minicircuits.com) P.O. Box 350166, Brooklyn, NY 11235-0003 (718) 934-4500 sales@minicircuits.com

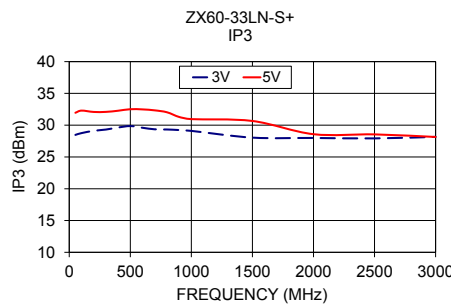
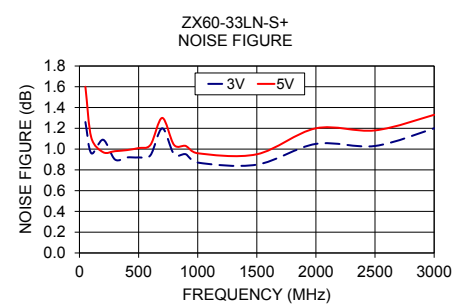
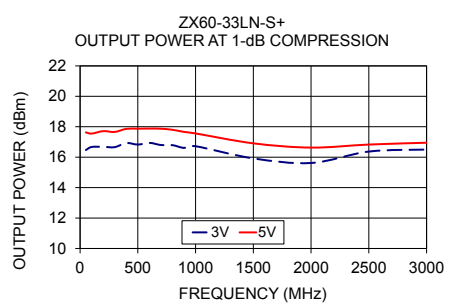
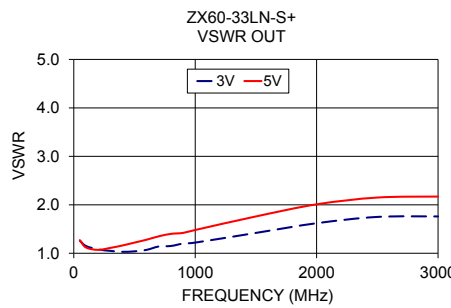
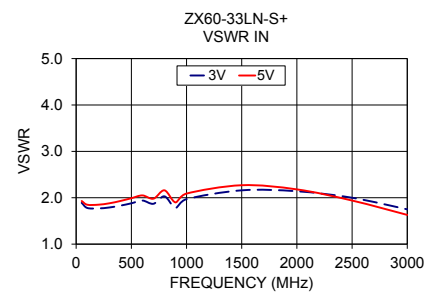
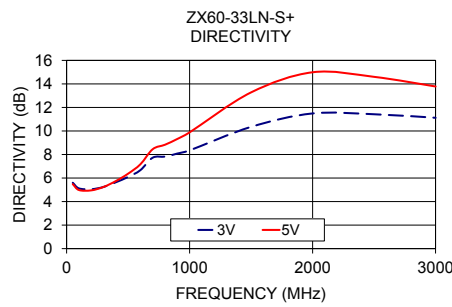
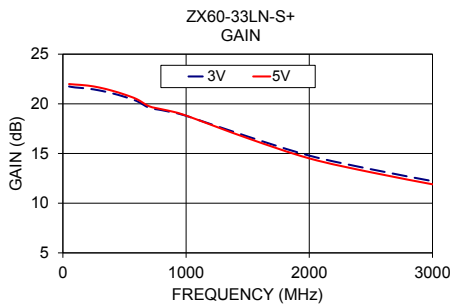
REV. E  
M166133  
ZX60-33LN-S+  
ED-12875/2  
MM/CP/AM  
190315  
Page 1 of 2

# NON-CATALOG

## Typical Performance Data/Curves

## ZX60-33LN-S+

FREQUENCY (MHz)	GAIN (dB)		DIRECTIVITY (dB)		VSWR IN (:1)		VSWR OUT (:1)		NOISE FIGURE (dB)		POUT at 1dB COMPR. (dBm)		IP3 (dBm)	
	3V	5V	3V	5V	3V	5V	3V	5V	3V	5V	3V	5V	3V	5V
50.00	21.75	21.99	5.60	5.48	1.89	1.93	1.26	1.27	1.26	1.60	16.47	17.63	28.47	31.95
100.00	21.65	21.94	5.12	4.98	1.78	1.85	1.15	1.12	0.96	1.11	16.67	17.55	28.75	32.29
200.00	21.54	21.84	5.05	4.95	1.77	1.85	1.08	1.07	1.09	0.97	16.68	17.71	29.11	32.08
300.00	21.34	21.63	5.24	5.24	1.79	1.88	1.05	1.11	0.90	0.98	16.66	17.66	29.31	32.09
400.00	21.06	21.32	5.64	5.74	1.83	1.93	1.03	1.16	0.92	0.99	16.93	17.86	29.63	32.27
500.00	20.71	20.94	6.09	6.37	1.88	1.99	1.04	1.22	0.92	1.01	16.83	17.87	29.86	32.51
600.00	20.28	20.47	6.67	7.17	1.94	2.05	1.07	1.28	0.94	1.04	16.94	17.88	29.59	32.48
700.00	19.61	19.76	7.73	8.45	1.87	1.98	1.14	1.35	1.20	1.30	16.80	17.87	29.35	32.33
800.00	19.37	19.46	7.82	8.83	2.03	2.16	1.15	1.40	0.95	1.04	16.79	17.80	29.32	32.03
900.00	19.11	19.19	8.08	9.32	1.78	1.90	1.20	1.42	0.95	1.03	16.61	17.66	29.23	31.29
1000.00	18.80	18.82	8.35	9.88	1.97	2.09	1.22	1.48	0.87	0.96	16.72	17.56	29.10	30.95
1500.00	16.71	16.54	10.35	13.28	2.16	2.27	1.42	1.76	0.85	0.95	15.92	16.91	28.04	30.66
2000.00	14.79	14.51	11.49	14.99	2.14	2.18	1.62	2.01	1.05	1.20	15.62	16.63	27.99	28.58
2500.00	13.42	13.11	11.42	14.60	2.00	1.94	1.75	2.15	1.03	1.18	16.37	16.83	27.92	28.55
3000.00	12.22	11.90	11.12	13.78	1.75	1.63	1.76	2.17	1.20	1.33	16.50	16.95	28.16	28.14



### Notes

- A. Performance and quality attributes and conditions not expressly stated in this specification document are intended to be excluded and do not form a part of this specification document.
- B. Electrical specifications and performance data contained in this specification document are based on Mini-Circuit's applicable established test performance criteria and measurement instructions.
- C. The parts covered by this specification document are subject to Mini-Circuits standard limited warranty and terms and conditions (collectively, "Standard Terms"); Purchasers of this part are entitled to the rights and benefits contained therein. For a full statement of the Standard Terms and the exclusive rights and remedies thereunder, please visit Mini-Circuits' website at [www.minicircuits.com/MCLStore/terms.jsp](http://www.minicircuits.com/MCLStore/terms.jsp)

