

High Pass Filter Coaxial

ZX75HP-EDU2571+

Important Note

This model has been designed, built and tested in our engineering department. Performance data represents model capability. At present it is a non-catalog model. On request, we can supply a final specification sheet, part number and price/delivery information.



Please click "Back", and then click "Contact Us" for Applications support.

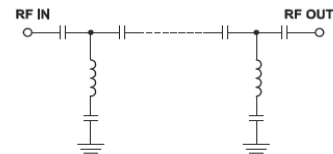
CASE STYLE : HY1239

ELECTRICAL SPECIFICATIONS 50Ω @ +25°C

Parameter	Min.	Typ.	Max.	Units
Passband (Loss < 1.5 dB)	1200	-	6000	MHz
Insertion loss 3 dB	-	1124	-	MHz
Stopband (Loss > 30 dB)	1	-	1000	MHz
Passband VSWR	-	1.92	-	(:1)
Stopband VSWR	-	20	-	(:1)

Functional Schematic

MAXIMUM RATINGS	
Operating Temperature	-40°C to 85°C
Storage Temperature	-55°C to 100°C
RF Power Input	1W



PIN CONNECTIONS	
Input	SMA FEMALE
Output	SMA FEMALE

+RoHS Compliant

The +Suffix identifies RoHS Compliance. See our web site for RoHS Compliance methodologies and qualifications