

Coaxial

# Voltage Controlled Oscillator

# ZX95-3900A-S+

Linear Tuning 3650 to 3900 MHz

### Features

- linear tuning characteristics
- low pushing
- low pulling
- protected by US patent 6,790,049

### Applications

- r & d
- lab
- instrumentation
- wireless communications
- radio link



Generic photo used for illustration purposes only

CASE STYLE: GB956

Connectors	Model
SMA	ZX95-3900A-S+

### +RoHS Compliant

The +Suffix identifies RoHS Compliance. See our web site for RoHS Compliance methodologies and qualifications

### Electrical Specifications

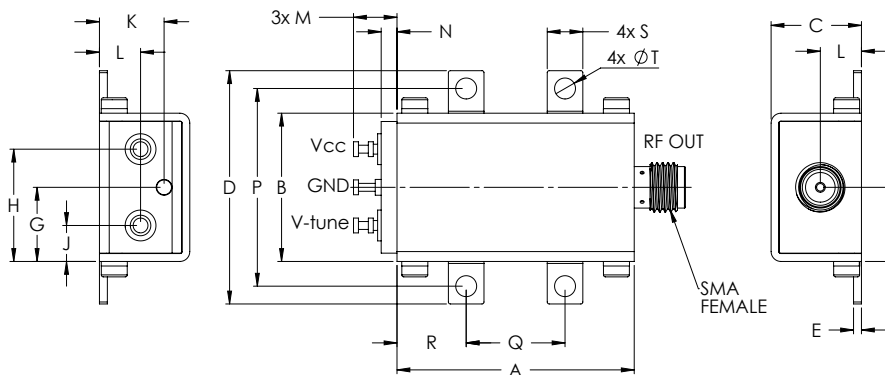
MODEL NO.	FREQ. (MHz)		POWER OUTPUT (dBm)	PHASE NOISE dBc/Hz SSB at offset frequencies, kHz				TUNING					NON HARMONIC SPURIOUS (dBc)	HARMONICS (dBc)		PULLING pk-pk @ 12 dB (MHz)	PUSHING (MHz/V)	DC OPERATING POWER			
	Min.	Max.		Typ.	1	10	100	1000	VOLTAGE RANGE (V)	SENSITIVITY (MHz/V)	PORT CAP (pF)	3 dB MODULATION BANDWIDTH (MHz)		Typ.	Max.			Typ.	Typ.	Vcc	Current
									Min.	Max.	Typ.	Typ.		Typ.						Max.	(volts)
ZX95-3900A-S+	3650	3900	+4.5	-72	-96	-118	-138	0.5	12	34-40	20	100	-90	-20	-12	2	4	5	40		

### Maximum Ratings

Operating Temperature	-55°C to 85°C
Storage Temperature	-55°C to 100°C
Absolute Max. Supply Voltage (Vcc)	6V
Absolute Max. Tuning Voltage (Vtune)	14V
All specifications	50 ohm system

Permanent damage may occur if any of these limits are exceeded.

### Outline Drawing



### Outline Dimensions (inch/mm)

A	B	C	D	E	F	G	H	J	K	L	M	N	P	Q	R	S	T	wt.
1.20	.75	.46	1.18	.04	.38	.38	.57	.18	.33	.21	.22	.08	1.00	.50	.35	.18	.106	grams
30.48	19.05	11.68	29.97	1.02	9.65	9.65	14.48	4.57	8.38	5.33	5.59	2.03	25.40	12.70	8.89	4.57	2.69	35.0

#### Notes

- A. Performance and quality attributes and conditions not expressly stated in this specification document are intended to be excluded and do not form a part of this specification document.  
 B. Electrical specifications and performance data contained in this specification document are based on Mini-Circuits' applicable established test performance criteria and measurement instructions.  
 C. The parts covered by this specification document are subject to Mini-Circuits standard limited warranty and terms and conditions (collectively, "Standard Terms"); Purchasers of this part are entitled to the rights and benefits contained therein. For a full statement of the Standard Terms and the exclusive rights and remedies thereunder, please visit Mini-Circuits' website at [www.minicircuits.com/MCLStore/terms.jsp](http://www.minicircuits.com/MCLStore/terms.jsp)

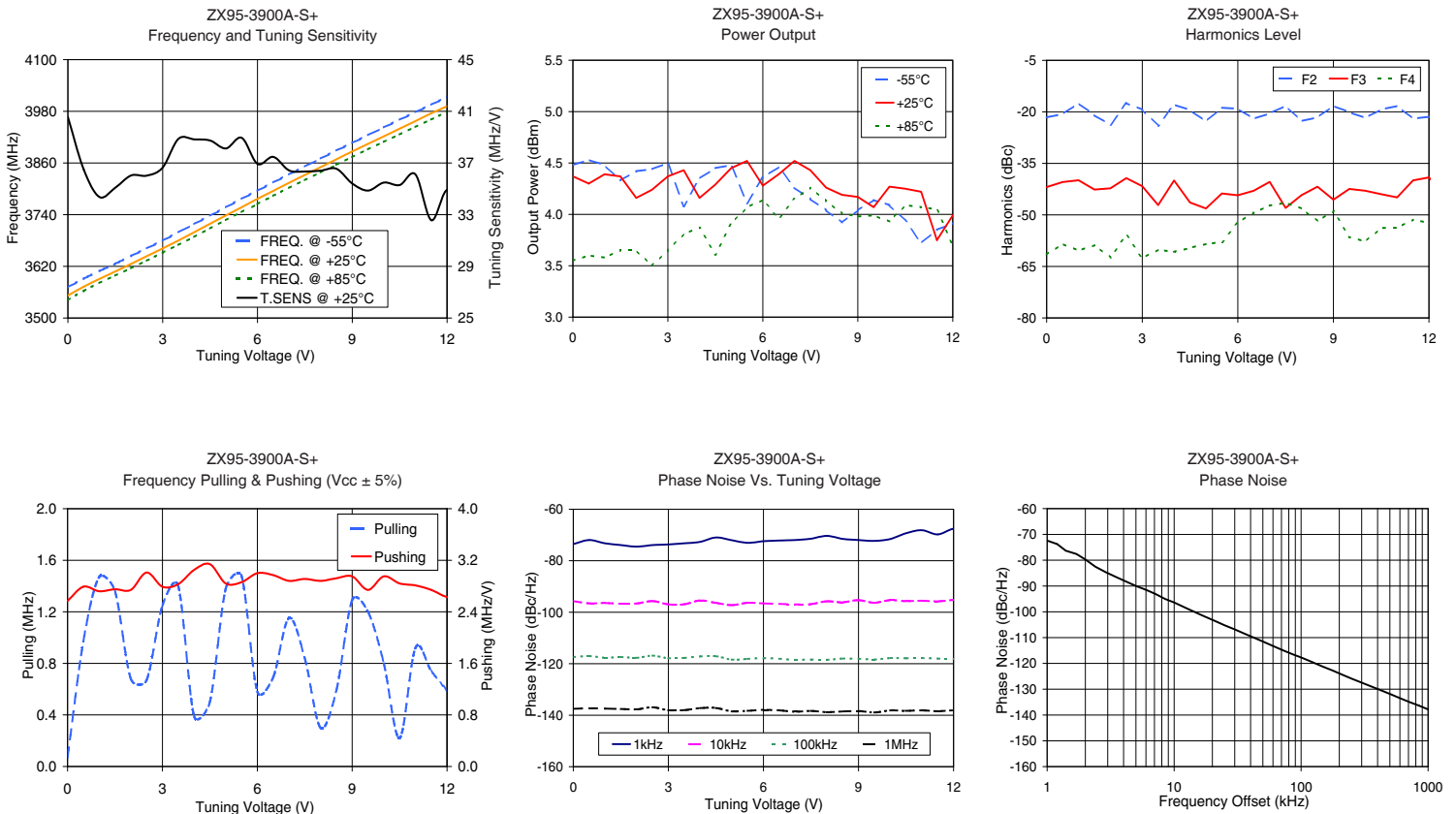


## Performance Data & Curves\*

## ZX95-3900A-S+

V TUNE	TUNE SENS (MHz/V)	FREQUENCY (MHz)			POWER OUTPUT (dBm)			Icc (mA)	HARMONICS (dBc)			FREQ. PUSH (MHz/V)	FREQ. PULL (MHz)	PHASE NOISE (dBc/Hz) at offsets				FREQ OFFSET (kHz)	PHASE NOISE at 3775 MHz (dBc/Hz)
		-55°C	+25°C	+85°C	-55°C	+25°C	+85°C		F2	F3	F4			1kHz	10kHz	100kHz	1MHz		
0.00	40.56	3571.7	3552.4	3542.1	4.48	4.37	3.55	30.06	-21.6	-41.9	-61.5	2.57	0.07	-73.53	-95.7	-117.4	-137.5	1.0	-72.40
0.50	36.51	3591.4	3572.7	3562.9	4.53	4.30	3.60	30.06	-20.7	-40.4	-58.5	2.79	0.97	-71.95	-96.6	-117.1	-137.3	2.0	-79.71
1.00	34.37	3609.2	3590.9	3581.3	4.48	4.39	3.58	30.07	-17.5	-39.9	-60.4	2.72	1.47	-73.23	-96.4	-117.7	-137.4	3.5	-86.55
1.50	35.09	3626.2	3608.1	3598.5	4.33	4.37	3.65	30.07	-21.0	-42.6	-58.8	2.75	1.36	-73.91	-96.7	-117.4	-137.6	6.0	-91.47
2.00	36.03	3644.2	3625.7	3615.6	4.42	4.16	3.65	30.09	-23.8	-42.3	-62.4	2.74	0.68	-74.51	-96.6	-117.7	-137.7	8.5	-95.01
2.50	36.02	3661.8	3643.7	3633.2	4.44	4.24	3.50	30.08	-17.5	-39.3	-55.8	3.01	0.67	-73.93	-95.7	-116.9	-136.9	10.0	-96.38
3.00	36.65	3679.8	3661.7	3651.8	4.50	4.37	3.65	30.14	-19.4	-41.6	-62.6	2.79	1.25	-73.69	-97.0	-117.9	-138.1	20.8	-103.46
4.00	38.83	3718.3	3699.4	3688.2	4.35	4.16	3.87	30.18	-17.9	-40.0	-60.8	3.05	0.39	-72.67	-95.5	-117.2	-137.2	35.5	-108.40
5.00	38.12	3757.1	3738.2	3727.3	4.48	4.45	3.91	30.30	-22.8	-48.1	-58.5	2.84	1.38	-72.02	-97.2	-118.4	-138.5	60.7	-113.34
5.50	38.95	3776.8	3757.3	3745.9	4.11	4.52	4.07	30.34	-18.8	-43.8	-57.9	2.86	1.48	-73.03	-96.3	-118.1	-138.3	86.7	-116.55
6.00	36.93	3795.7	3776.8	3764.7	4.36	4.28	4.14	30.40	-19.1	-44.3	-52.3	3.00	0.58	-72.40	-96.6	-117.8	-137.9	100.0	-117.68
7.00	36.43	3833.3	3814.0	3802.0	4.26	4.52	4.15	30.52	-20.4	-40.4	-47.3	2.88	1.15	-71.97	-96.9	-118.5	-138.6	148.1	-121.25
8.00	36.40	3870.3	3850.4	3838.0	4.04	4.26	4.13	30.62	-22.7	-44.3	-48.1	2.88	0.30	-70.33	-95.8	-118.5	-138.8	177.0	-122.75
9.00	35.41	3906.5	3886.8	3873.7	4.04	4.17	3.98	30.76	-18.3	-45.6	-48.9	2.95	1.29	-71.95	-95.3	-118.1	-138.4	211.6	-124.39
9.50	34.86	3924.6	3904.5	3891.6	4.14	4.07	3.99	30.86	-20.1	-42.4	-56.4	2.74	1.20	-72.28	-96.3	-118.4	-138.9	302.4	-127.54
10.00	35.49	3942.5	3922.0	3908.9	4.09	4.27	3.93	30.87	-21.8	-43.0	-57.8	2.95	0.80	-71.56	-95.3	-117.8	-138.2	361.5	-129.04
10.50	35.29	3960.5	3939.7	3926.1	3.94	4.25	4.09	30.93	-19.3	-44.0	-53.8	2.84	0.22	-69.31	-95.7	-117.9	-138.3	507.5	-131.96
11.00	36.11	3978.2	3957.4	3943.5	3.72	4.22	4.07	30.99	-18.3	-44.9	-53.8	2.81	0.92	-68.16	-95.5	-117.8	-138.1	606.7	-133.56
11.50	32.57	3995.4	3975.4	3960.8	3.85	3.75	4.05	31.10	-22.0	-40.0	-51.4	2.74	0.74	-69.78	-95.8	-118.0	-138.5	851.6	-136.41
12.00	34.90	4013.2	3991.7	3978.5	3.91	3.99	3.70	31.14	-21.4	-39.1	-52.3	2.63	0.59	-67.57	-95.2	-118.1	-138.1	1000.0	-137.84

\*at 25°C unless mentioned otherwise



### Notes

- A. Performance and quality attributes and conditions not expressly stated in this specification document are intended to be excluded and do not form a part of this specification document.
- B. Electrical specifications and performance data contained in this specification document are based on Mini-Circuit's applicable established test performance criteria and measurement instructions.
- C. The parts covered by this specification document are subject to Mini-Circuits standard limited warranty and terms and conditions (collectively, "Standard Terms"); Purchasers of this part are entitled to the rights and benefits contained therein. For a full statement of the Standard Terms and the exclusive rights and remedies thereunder, please visit Mini-Circuits' website at [www.minicircuits.com/MCLStore/terms.jsp](http://www.minicircuits.com/MCLStore/terms.jsp)

