

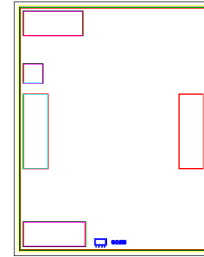
Ultra High Dynamic Range, Shutdown

Monolithic Amplifier Die TSS-13HLN-D+

50Ω 1MHz to 1 GHz

The Big Deal

- Ultra-High IP3, +42.9 dBm typ.
- Medium power, +28.4 dBm typ.
- Excellent Noise Figure, 1.4 dB typ.
- Shutdown feature
- Operates over wide DC input: +3V to +8V



Product Overview

TSS-13HLN-D+ (RoHS compliant) is an advanced wideband amplifier die with shutdown feature. It is fabricated using E-PHEMT technology and offers extremely high dynamic range over a broad frequency range and with low noise figure. In addition, the TSS-13HLN-D+ has good input and output return loss over a broad frequency range.

Key Features

Feature	Advantages
Broad Band: 1MHz to 1GHz	Broadband covering primary wireless communications bands: VHF, UHF, Cellular
Extremely High IP3 40.6 dBm typical at 1 MHz 42.9 dBm typical at 0.5 GHz	The TSS-13HLN-D+ matches industry leading IP3 performance relative to device size and power consumption. The combination of the design and E-PHEMT Structure provides enhanced linearity over a broad frequency range as evidence in the IP3 being approximately 14-15 dB above the P1dB point. This feature makes this amplifier ideal for use in: <ul style="list-style-type: none">• Driver amplifiers for complex waveform up converter paths• Drivers in linearized transmit systems• Secondary amplifiers in ultra-High Dynamic range receivers
Shutdown feature	Allow users to turn on and off the amplifier with pulsed signals while keeping the power supply at constant voltage to minimize DC power consumption
Low Noise Figure 1.4 dB at 0.5 GHz	Enables lower system noise figure performance and along with High OIP3 provides high dynamic range
High P1dB, 28.4 dBm at 0.5 GHz	High P1dB, High OIP3, Low NF results in a very dynamic range preventing amplifier saturation under strong interfering signals.

Ultra High Dynamic Range, Shutdown

Monolithic Amplifier Die

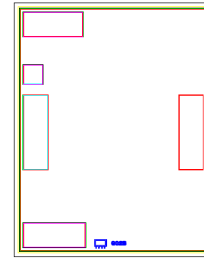
1 MHz to 1 GHz

Product Features

- High IP3, 42.9 dBm typ. at 0.5 GHz
- Gain, 23 dB typ. at 0.5 GHz
- Low noise figure, 1.4 dB at 0.5 GHz
- High P1dB 28.4 dBm 0.5 GHz
- Shutdown feature
- Operates over wide DC input: +3V to 8V

Typical Applications

- Base station infrastructure
- CATV
- Cellular



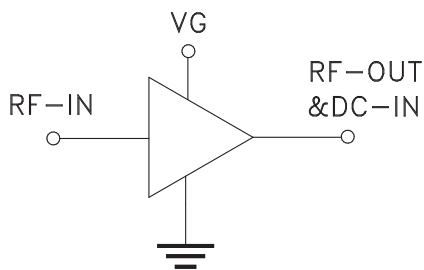
+RoHS Compliant
The +Suffix identifies RoHS Compliance. See our web site for RoHS Compliance methodologies and qualifications

Ordering Information: Refer to Last Page

General Description

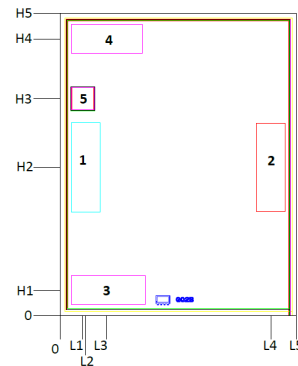
TSS-13HLN-D+ (RoHS compliant) is an advanced wideband amplifier die with shutdown feature. It is fabricated using E-PHEMT technology and offers extremely high dynamic range over a broad frequency range and with low noise figure. In addition, the TSS-13HLN-D+ has good input and output return loss over a broad frequency range.

Simplified Schematic and Pad description



Pad#	Function
1	RF-IN
2	RF-OUT & DC-IN
5	VG
3,4	Ground

Bonding Pad Position



Dimensions in μm , Typical

L1	L2	L3	L4	L5	H1	H2	H3	H4	H5	Thick-ness	Die Size	Pad Size 1	Pad Size 2	Pad Size 3	Pad Size 4	Pad Size 5
76.0	86.0	160.0	705.0	790.0	86.0	495.0	725.0	925.0	1010.0	100	1010 x 900	101 x 301	98 x 298	251 x 101	241 x 101	81 x 81

Electrical Specifications¹ at 25°C, unless noted

Parameter	Condition(MHz)	Vd = 8V		Vd = 5V		Vd = 3V		Units
		ON State	OFF State	ON State	OFF State	ON State	OFF State	
Frequency Range		1-1000	1-1000	1-1000	1-1000	1-1000	1-1000	MHz
Noise Figure	1	3	--	3.1	--	3	--	dB
	20	1.4	--	1.1	--	1.1	--	
	250	1.3	--	1.1	--	1.1	--	
	500	1.4	--	1.1	--	1.1	--	
	1000	1.6	--	1.2	--	1.3	--	
Gain	1	25	-24	24.7	-24	23.9	-24	dB
	20	24.4	-22	24.2	-21	23.5	-22	
	250	23.2	-21	23	-21	22.3	-21	
	500	23	-22	22.8	-22	21.9	-22	
	1000	21.1	-26	20.9	-27	19.5	-27	
Reversed Isolation	1-1000	26	27	26	27	26	27	dB
Input Return Loss	1	11	12	11	12	10	12	dB
	20	16	12	15	12	15	12	
	250	17	12	18	12	19	12	
	500	20	12	21	12	17	12	
	1000	14	10	14	10	10	10	
Output Return Loss	1	11	1	11	1	11	1	dB
	20	19	2	19	2	21	2	
	250	18	2	18	2	21	2	
	500	33	2	25	2	21	2	
	1000	12	2	11	2	10	2	
Output Power @1dB compression AMP-ON	1	25.2	--	20.3	--	14.2	--	dBm
	20	26.7	--	22.4	--	16.3	--	
	250	28	--	24.1	--	19.3	--	
	500	28.4	--	24.5	--	19.5	--	
	1000	26.7	--	23.4	--	18.3	--	
Output IP3 (Pout = 0dBm/Tone)	1	40.6	--	38.4	--	31.6	--	dBm
	20	41.3	--	40.3	--	33.2	--	
	250	41.2	--	39.6	--	34.4	--	
	500	42.9	--	39.2	--	33	--	
	1000	40.8	--	36.2	--	29.4	--	
Device Operating Voltage(VDD)		8	8	5	5	3	3	V
Device Operating Current(ID)		234	7.5	142	5	72	3	mA
Control Voltage (VG)		0	5	0	5	0	5	V
Device Current Variation vs. Temperature		-136 ²	--	10 ³	--	33 ³	--	uA/degC
Device Current Variation vs. Voltage		0.025	--	0.025	--	0.033	--	mA/mV
Thermal Resistance		23.3	--	23.3	--	23.3	--	degC/W

1. Measured on Mini-Circuits Characterization test board. Die is packaged in 3x3 mm, 12-lead MCL package and soldered on TB-TSS-13HLN+. See Characterization Test Circuit (Fig. 1)

2. (Current at 95°C - Current at -45°C)/140

3. (Current at 105°C - Current at -45°C)/150

Absolute Maximum Ratings⁴

Parameter	at 8V	at 3V&5V
Operating Temperature (ground lead)	-40°C to 95°C	-40°C to 105°C
Power Dissipation	3.3W	3.3W
Device Operating Current (ID)	241mA	151mA
Input Power (CW)	+28 dBm (5 minutes max) +10 dBm (continuous) for 1-30 MHz +18 dBm (continuous) for 0.03-1 GHz	+28 dBm (5 minutes max) +6 dBm (continuous) for 1-30 MHz +10 dBm (continuous) for 0.03-1 GHz
DC Voltage on Pad 2	10V	10V
DC Voltage on Pad 5	10V	10V

4. Permanent damage may occur if any of these limits are exceeded.
Electrical maximum ratings are not intended for continuous normal operation.



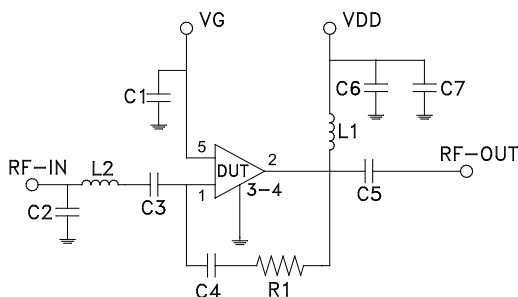
Switching Specifications

Parameter		8V Typ	5V Typ.	3V Typ.	Units
Amplifier ON to Shutdown	OFF TIME (50% Control to 10% RF)	5.3	4.8	6.2	µs
	FALL TIME (90 to 10% RF)	7.3	7.4	3.6	
Amplifier Shutdown to ON	ON TIME (50% Control to 90% RF)	77.7	95.2	144.7	µs
	RISE TIME (10% to 90% RF)	54.2	60.0	200.7	
Control Voltage Leakage		633.3	482.9	311.0	mV

Control Voltage (V_G) Fig. 1

	Min.	Typ.	Max.	Units
Amplifier-ON	—	0	0.7	V
Amplifier-OFF	1.9	5	—	V

Characterization Test Circuit / Recommended Application Circuit



Component	Size	Value	Part Number	Manufacturer
C1	0402	0.1µF	GRM155R71C104KA88D	Murata
C2	0402	1.5pF	GRM1555C1H1R5CA1D	Murata
C3	0603	2.2µF	GRM188C71E225KE11D	Murata
C4	0402	0.1µF	GRM155R71C104KA88D	Murata
C5	0603	2.2µF	GRM188C71E225KE11D	Murata
C6	0402	1000pF	GRM1555C1H102JA01D	Murata
C7	0805	10µF	GRM21BC71E106KE11L	Murata
L1	1210	15µH	LQH32DN150K53L	Murata
L2	0603	5.1nH	0603CS-5N1XJLU	Coilcraft
R1	0402	1.5KOhm	RK73H1ETTP1501F	Koa

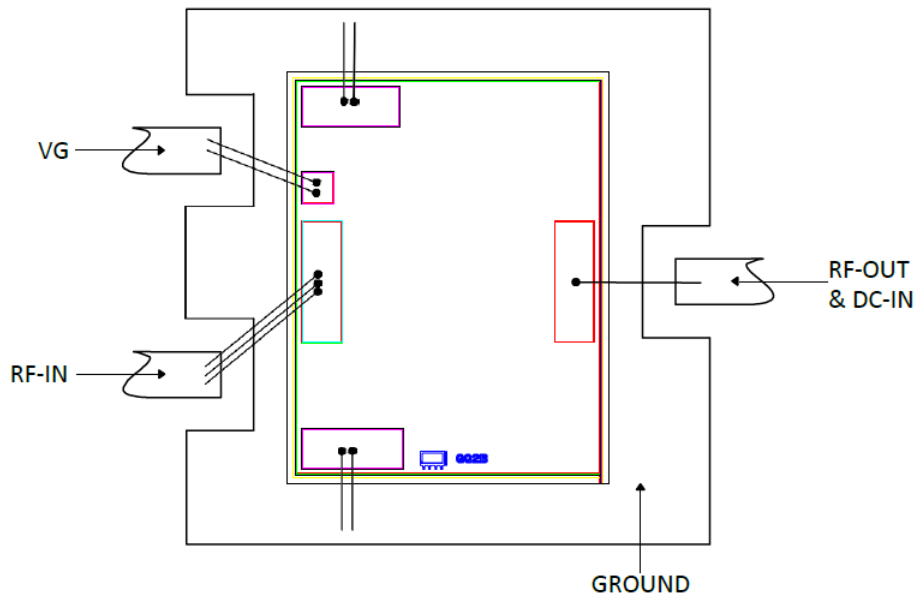
Fig 1. Block diagram of Test Circuit used for characterization. (DUT is packaged 3x3mm, 12-lead MCLP package and soldered on Mini-Circuits Characterization test board TB-TSS-13HLN+)

Gain, Return loss, Output power at 1dB compression (P1dB) , output IP3 (OIP3) and noise figure measured using Agilent’s N5242A PNA-X microwave network analyzer.

Conditions:

- Gain and Return Loss: Pin= -25dBm
- Output IP3 (OIP3): Two tones, spaced 1 MHz apart, +0dBm/tone at output.
- Switching Time
 RF Signal: Pin=-25 dBm, f_{RF}=500 MHz.
 V_{DD}=8V,5V or 3V DC, V_G=Pulse signal at 1 KHz with V_{HIGH}=5V, V_{LOW}=0V, 50% duty cycle.

Assembly Diagram



Assembly and Handling Procedure

1. Storage
Dice should be stored in a dry nitrogen purged desiccators or equivalent.
2. ESD
MMIC E-PHEMT amplifier dice are susceptible to electrostatic and mechanical damage. Die are supplied in antistatic protected material, which should be opened in clean room conditions at an appropriately grounded anti-static workstation. Devices need careful handling using correctly designed collets, vacuum pickup tips or sharp antistatic tweezers to deter ESD damage to dice.
3. Die Attach
The die mounting surface must be clean and flat. Using conductive silver filled epoxy, recommended epoxies are DieMat DM6030HK-PT/H579 or Ablestik 84-1LMISR4. Apply sufficient epoxy to meet required epoxy bond line thickness, epoxy fillet height and epoxy coverage around total die periphery. Parts shall be cured in a nitrogen filled atmosphere per manufacturer's cure condition. It is recommended to use antistatic die pick up tools only.
4. Wire Bonding
Bond pad openings in the surface passivation above the bond pads are provided to allow wire bonding to the dice gold bond pads. Thermosonic bonding is used with minimized ultrasonic content. Bond force, time, ultrasonic power and temperature are all critical parameters. Suggested wire is pure gold, 1 mil diameter. Bonds must be made from the bond pads on the die to the package or substrate. All bond wires should be kept as short as low as reasonable to minimize performance degradation due to undesirable series inductance.

Additional Detailed Technical Information <i>additional information is available on our dash board.</i>	
Performance Data	Data Table
	Swept Graphs
	S-Parameter (S2P Files) Data Set with and without port extension(.zip file)
Case Style	Die
Die Ordering and packaging information	Quantity, Package Model No.
	Small, Gel - Pak: 5,10,50,100 KGD* TSS-13HLN-DG+ Medium†, Partial wafer: KGD*<1672 TSS-13HLN-DP+ Large†, Full Wafer TSS-13HLN-DF+
	† Available upon request contact sales representative
	Refer to AN-60-067
Environmental Ratings	ENV80

*Known Good Dice ("KGD") means that the dice in question have been subjected to Mini-Circuits DC test performance criteria and measurement instructions and that the parametric data of such dice fall within a predefined range. While DC testing is not definitive, it does help to provide a higher degree of confidence that dice are capable of meeting typical RF electrical parameters specified by Mini-Circuits.

ESD Rating**

Human Body Model (HBM): Class 1A (pass 250V) in accordance with ANSI/ESD STM 5.1 - 2001

** Tested in industry standard 3X3 mm, 12 lead MCLP package.

Additional Notes

- A. Performance and quality attributes and conditions not expressly stated in this specification document are intended to be excluded and do not form a part of this specification document.
- B. Electrical specifications and performance data contained in this specification document are based on Mini-Circuit's applicable established test performance criteria and measurement instructions.
- C. The parts covered by this specification document are subject to Mini-Circuits standard limited warranty and terms and conditions (collectively, "Standard Terms"); Purchasers of this part are entitled to the rights and benefits contained therein. For a full statement of the Standard Terms and the exclusive rights and remedies thereunder, please visit Mini-Circuits' website at www.minicircuits.com/MCLStore/terms.jsp
- D. Mini-Circuits does not warrant the accuracy or completeness of the information, text, graphics and other items contained within this document and same are provided as an accommodation and on an "As is" basis, with all faults.
- E. Purchasers of this part are solely responsible for proper storing, handling, assembly and processing of Known Good Dice (including, without limitation, proper ESD preventative measures, die preparation, die attach, wire bonding and related assembly and test activities), and Mini-Circuits assumes no responsibility therefor or for environmental effects on Known Good Dice.
- F. Mini-Circuits and the Mini-Circuits logo are registered trademarks of Scientific Components Corporation d/b/a Mini-Circuits. All other third-party trademarks are the property of their respective owners. A reference to any third-party trademark does not constitute or imply any endorsement, affiliation, sponsorship, or recommendation by any such third-party of Mini-Circuits or its products.

MMIC Amplifier Die

TSS-13HLN-D+

Typical Performance Data

Definitions:

Input Return Loss = -S11 (dB)

Gain(Power Gain) = S21 (dB)

Reverse Isolation = -S12 (dB)

Output Return Loss = -S22 (dB)

TEST CONDITIONS: Vd = 2.75V, Id = 63mA @ Temperature = +25°C

FREQ	Gain	Isolation	Input Return Loss	Output Return Loss	Stability		IP-3 Output	1dB Comp. Output	Noise Figure
					K	Measure			
(MHz)	(dB)	(dB)	(dB)	(dB)	K	Measure	(dBm)	(dBm)	(dB)
1	23.66	28.72	9.42	10.79	1.09	0.61	30.06	13.37	-
3	24.02	28.16	11.85	20.07	1.08	0.64	30.31	13.38	-
5	23.99	28.01	12.29	24.75	1.07	0.64	30.45	13.45	-
7	23.91	27.68	12.56	26.54	1.06	0.62	30.61	13.55	-
9	23.82	27.54	12.90	26.56	1.05	0.62	30.77	13.79	-
10	23.77	27.33	13.05	26.19	1.04	0.61	30.84	13.84	0.93
20	23.24	26.25	14.73	22.19	1.02	0.55	31.69	15.26	1.06
30	22.86	25.61	16.32	20.72	1.02	0.50	32.37	16.45	0.96
40	22.65	25.36	17.46	20.24	1.02	0.48	32.69	17.44	0.99
50	22.54	25.53	18.04	19.35	1.04	0.47	32.84	17.98	1.03
60	22.44	25.17	18.77	19.77	1.03	0.47	32.95	17.98	1.02
70	22.38	25.03	19.11	19.69	1.03	0.46	33.03	18.11	1.05
80	22.34	25.05	19.40	19.65	1.03	0.46	33.12	18.27	1.05
90	22.31	25.06	19.55	19.69	1.04	0.47	33.15	18.30	1.06
100	22.29	24.98	19.75	19.79	1.04	0.46	33.18	18.39	1.10
150	22.22	24.98	20.03	20.30	1.04	0.47	32.84	18.43	1.11
200	22.16	24.99	19.88	21.17	1.04	0.48	33.19	18.46	1.12
250	22.12	25.12	19.47	22.31	1.05	0.50	32.66	18.57	1.09
300	22.06	25.18	18.91	23.51	1.05	0.52	33.62	18.58	1.10
350	21.99	25.25	18.21	24.30	1.05	0.55	32.69	18.62	1.16
400	21.91	25.30	17.56	24.21	1.05	0.57	31.99	18.51	1.14
450	21.81	25.47	16.88	22.76	1.06	0.60	31.94	18.34	1.12
500	21.67	25.61	16.13	20.60	1.07	0.63	31.30	18.54	1.13
550	21.41	25.88	15.14	18.40	1.08	0.68	30.83	18.10	1.13
600	21.11	26.18	13.50	18.72	1.10	0.74	30.29	18.10	1.15
650	21.24	26.08	13.46	18.13	1.09	0.73	30.35	18.12	1.14
700	21.13	26.09	13.22	16.20	1.08	0.73	30.21	18.14	1.16
750	20.94	26.31	12.83	14.74	1.09	0.76	29.97	17.95	1.14
800	20.72	26.47	12.31	13.52	1.10	0.78	29.70	18.02	1.25
850	20.46	26.64	11.75	12.47	1.11	0.80	29.13	18.00	1.24
900	20.13	26.98	11.09	11.50	1.13	0.83	29.00	17.83	1.22
950	19.71	27.39	10.30	10.58	1.15	0.87	27.92	17.52	1.25
1000	19.10	27.90	9.28	9.77	1.20	0.92	27.69	17.12	1.29
1050	18.20	28.75	7.93	9.41	1.29	1.00	27.17	16.56	1.38
1100	17.69	29.16	6.76	10.67	1.35	1.11	26.71	16.33	1.43
1150	18.04	28.75	6.44	12.23	1.28	1.13	27.53	16.84	1.45
1200	17.99	28.76	6.18	11.58	1.25	1.14	27.39	17.02	1.60

Note: Test data of Die packaged in industry standard 3x3 mm, 12-lead MCL package



Typical Performance Data

Definitions:

Input Return Loss = -S11 (dB)

Gain(Power Gain) = S21 (dB)

Reverse Isolation = -S12 (dB)

Output Return Loss = -S22 (dB)

TEST CONDITIONS: Vd = 3.00V, Id = 72mA @ Temperature = +25°C

FREQ	Gain	Isolation	Input Return Loss	Output Return Loss	Stability		IP-3 Output	1dB Comp. Output	Noise Figure
					K	Measure			
(MHz)	(dB)	(dB)	(dB)	(dB)	K	Measure	(dBm)	(dBm)	(dB)
1	23.86	28.94	9.63	10.92	1.10	0.62	31.64	14.60	2.92
3	24.22	28.04	12.16	20.79	1.07	0.61	31.90	14.60	1.94
5	24.19	28.07	12.62	26.07	1.07	0.63	32.05	14.66	1.69
7	24.10	27.81	12.89	28.17	1.06	0.62	32.21	14.76	1.51
9	24.00	27.56	13.23	27.70	1.05	0.61	32.37	15.00	1.21
10	23.96	27.42	13.37	26.88	1.04	0.60	32.44	15.05	0.95
20	23.41	26.28	14.96	21.60	1.01	0.53	33.27	16.34	1.05
30	23.03	25.73	16.44	20.06	1.02	0.49	33.87	17.73	0.98
40	22.82	25.45	17.31	19.43	1.02	0.47	34.20	18.49	1.00
50	22.70	25.42	18.11	18.91	1.01	0.46	34.35	19.10	1.01
60	22.60	25.22	18.50	18.98	1.03	0.45	34.46	19.00	1.02
70	22.54	25.23	18.81	18.85	1.03	0.46	34.51	19.10	1.04
80	22.51	25.16	18.97	18.79	1.03	0.45	34.59	19.18	1.04
90	22.47	25.17	19.18	18.86	1.04	0.46	34.64	19.29	1.03
100	22.45	25.14	19.32	18.92	1.04	0.45	34.66	19.38	1.07
150	22.38	25.10	19.63	19.39	1.04	0.46	34.76	19.41	1.10
200	22.33	25.16	19.63	20.12	1.04	0.48	34.06	19.36	1.09
250	22.29	25.15	19.48	21.21	1.04	0.48	34.42	19.56	1.09
300	22.24	25.26	19.18	22.39	1.05	0.51	34.22	19.58	1.08
350	22.17	25.36	18.70	23.36	1.05	0.53	33.99	19.53	1.16
400	22.10	25.46	18.22	23.91	1.06	0.56	33.32	19.51	1.15
450	22.01	25.58	17.63	23.04	1.06	0.59	33.40	19.36	1.12
500	21.88	25.72	17.00	21.17	1.07	0.62	32.98	19.47	1.13
550	21.63	25.99	16.06	18.95	1.08	0.66	32.18	19.03	1.13
600	21.34	26.20	14.25	19.17	1.10	0.72	32.14	19.15	1.14
650	21.47	26.10	14.23	18.88	1.08	0.70	32.15	19.06	1.15
700	21.38	26.22	14.03	16.91	1.09	0.72	31.72	19.10	1.21
750	21.21	26.37	13.64	15.35	1.09	0.74	31.38	18.91	1.16
800	21.00	26.52	13.12	14.07	1.10	0.76	31.30	19.11	1.20
850	20.75	26.78	12.53	12.95	1.11	0.79	30.62	19.12	1.18
900	20.44	27.00	11.85	11.92	1.13	0.81	30.31	18.96	1.22
950	20.03	27.40	11.01	10.95	1.15	0.85	29.53	18.70	1.23
1000	19.43	27.92	9.91	10.08	1.20	0.90	29.28	18.30	1.27
1050	18.55	28.80	8.44	9.65	1.30	0.99	28.66	17.78	1.33
1100	18.02	29.27	7.16	10.88	1.37	1.09	28.14	17.52	1.42
1150	18.39	28.81	6.81	12.60	1.29	1.11	28.94	17.99	1.46
1200	18.37	28.82	6.54	12.01	1.26	1.12	28.80	18.11	1.51

Note: Test data of Die packaged in industry standard 3x3 mm, 12-lead MCL package



Typical Performance Data

Definitions:

Input Return Loss = -S11 (dB)

Gain(Power Gain) = S21 (dB)

Reverse Isolation = -S12 (dB)

Output Return Loss = -S22 (dB)

TEST CONDITIONS: Vd = 3.25V, Id = 79mA @ Temperature = +25°C

FREQ	Gain	Isolation	Input Return Loss	Output Return Loss	Stability		IP-3 Output	1dB Comp. Output	Noise Figure
					K	Measure			
(MHz)	(dB)	(dB)	(dB)	(dB)	K	Measure	(dBm)	(dBm)	(dB)
1	24.05	28.98	9.84	11.01	1.09	0.60	33.24	15.59	-
3	24.41	28.36	12.51	21.27	1.07	0.62	33.51	15.65	-
5	24.37	28.19	12.94	27.57	1.07	0.62	33.65	15.65	-
7	24.28	27.82	13.22	29.97	1.05	0.60	33.84	15.75	-
9	24.18	27.46	13.53	28.49	1.04	0.58	34.00	15.96	-
10	24.14	27.51	13.69	27.27	1.04	0.59	34.03	16.01	0.96
20	23.53	26.42	15.06	21.16	1.01	0.53	34.83	17.25	1.06
30	23.14	25.86	16.41	19.58	1.02	0.49	35.50	18.44	0.97
40	22.92	25.55	17.22	18.94	1.02	0.47	35.70	19.27	0.99
50	22.81	25.52	17.60	18.41	1.01	0.45	35.88	19.76	1.05
60	22.71	25.37	18.24	18.48	1.03	0.46	35.96	19.75	1.01
70	22.65	25.31	18.51	18.37	1.03	0.45	35.98	19.75	1.05
80	22.61	25.24	18.69	18.32	1.03	0.45	36.08	19.84	1.07
90	22.58	25.22	18.81	18.34	1.03	0.45	36.13	19.94	1.05
100	22.55	25.28	18.99	18.39	1.04	0.46	36.15	20.02	1.08
150	22.49	25.21	19.27	18.83	1.04	0.46	36.02	20.05	1.13
200	22.44	25.29	19.43	19.51	1.04	0.47	35.36	20.00	1.11
250	22.40	25.27	19.41	20.54	1.04	0.48	36.51	20.21	1.10
300	22.35	25.32	19.24	21.65	1.05	0.50	34.56	20.23	1.10
350	22.29	25.43	18.91	22.70	1.05	0.53	34.93	20.18	1.16
400	22.23	25.51	18.59	23.52	1.05	0.55	34.58	20.16	1.11
450	22.13	25.67	18.15	23.10	1.06	0.58	34.31	20.02	1.11
500	22.01	25.78	17.58	21.50	1.07	0.61	33.99	20.15	1.13
550	21.77	25.98	16.68	19.29	1.08	0.65	32.98	19.70	1.15
600	21.49	26.28	14.77	19.46	1.10	0.71	32.79	19.82	1.14
650	21.63	26.18	14.77	19.38	1.08	0.69	33.13	19.73	1.14
700	21.54	26.22	14.60	17.37	1.08	0.70	32.52	19.77	1.21
750	21.38	26.41	14.22	15.79	1.09	0.72	32.42	19.58	1.19
800	21.18	26.56	13.69	14.45	1.10	0.75	32.37	19.69	1.17
850	20.93	26.76	13.10	13.28	1.11	0.77	31.79	19.82	1.21
900	20.63	27.04	12.38	12.21	1.13	0.80	31.40	19.67	1.24
950	20.23	27.40	11.50	11.19	1.15	0.84	30.59	19.43	1.27
1000	19.64	27.98	10.35	10.28	1.20	0.89	30.32	19.04	1.28
1050	18.76	28.80	8.79	9.82	1.30	0.97	29.73	18.53	1.37
1100	18.24	29.28	7.43	11.07	1.37	1.08	29.17	18.29	1.42
1150	18.62	28.88	7.07	12.86	1.30	1.10	29.99	18.63	1.47
1200	18.61	28.80	6.79	12.28	1.25	1.11	29.86	18.87	1.53

Note: Test data of Die packaged in industry standard 3x3 mm, 12-lead MCL package



Typical Performance Data

Definitions:

Input Return Loss = -S11 (dB)

Gain(Power Gain) = S21 (dB)

Reverse Isolation = -S12 (dB)

Output Return Loss = -S22 (dB)

TEST CONDITIONS: Vd = 4.75V, Id = 132mA @ Temperature = +25°C

FREQ	Gain	Isolation	Input Return Loss	Output Return Loss	Stability		IP-3 Output	1dB Comp. Output	Noise Figure
					K	Measure			
(MHz)	(dB)	(dB)	(dB)	(dB)	K	Measure	(dBm)	(dBm)	(dB)
1	24.63	29.24	10.42	11.20	1.08	0.58	38.06	19.95	-
3	24.96	28.67	13.59	22.35	1.07	0.59	38.37	19.99	-
5	24.93	28.64	14.09	32.48	1.07	0.61	38.54	20.12	-
7	24.83	28.21	14.30	33.65	1.05	0.58	38.73	20.20	-
9	24.72	27.91	14.56	28.26	1.04	0.56	38.93	20.30	-
10	24.67	27.82	14.64	26.29	1.03	0.56	39.01	20.46	1.01
20	24.07	26.70	15.49	19.44	1.01	0.49	39.94	21.88	1.09
30	23.66	26.30	16.11	17.81	1.01	0.47	40.63	22.73	1.02
40	23.43	25.94	16.50	17.22	1.02	0.44	40.83	23.08	1.03
50	23.31	25.90	16.53	16.64	1.01	0.43	41.07	23.53	1.05
60	23.20	25.69	16.92	16.69	1.02	0.42	41.11	23.43	1.03
70	23.14	25.71	17.01	16.59	1.03	0.43	41.19	23.50	1.05
80	23.10	25.62	17.06	16.54	1.03	0.42	41.22	23.58	1.04
90	23.07	25.67	17.15	16.55	1.03	0.43	41.29	23.59	1.06
100	23.04	25.66	17.23	16.59	1.03	0.43	41.30	23.68	1.09
150	22.98	25.62	17.58	16.89	1.04	0.43	40.13	23.71	1.08
200	22.94	25.62	17.92	17.50	1.04	0.44	39.70	23.74	1.11
250	22.92	25.66	18.37	18.34	1.04	0.45	37.81	23.92	1.11
300	22.89	25.71	18.76	19.45	1.04	0.47	38.89	23.94	1.07
350	22.85	25.80	19.15	20.67	1.05	0.49	39.46	24.01	1.15
400	22.81	25.87	19.63	22.41	1.05	0.51	39.70	23.91	1.12
450	22.75	25.97	20.05	24.05	1.06	0.53	38.31	23.83	1.12
500	22.66	26.04	20.40	24.67	1.06	0.55	38.55	24.06	1.12
550	22.46	26.29	20.24	22.84	1.08	0.60	38.09	23.54	1.14
600	22.20	26.59	17.82	22.66	1.10	0.66	38.26	23.69	1.15
650	22.37	26.43	17.83	24.73	1.09	0.63	37.26	23.49	1.14
700	22.32	26.50	18.02	21.85	1.09	0.64	36.83	23.56	1.21
750	22.20	26.62	17.79	19.38	1.10	0.66	36.62	23.35	1.18
800	22.05	26.83	17.30	17.41	1.11	0.68	37.09	23.51	1.19
850	21.85	26.99	16.62	15.76	1.12	0.71	36.48	23.56	1.19
900	21.59	27.32	15.74	14.27	1.14	0.74	36.38	23.46	1.24
950	21.23	27.69	14.58	12.92	1.17	0.78	35.92	23.39	1.25
1000	20.67	28.23	12.99	11.73	1.23	0.83	35.86	23.01	1.27
1050	19.79	29.12	10.89	11.12	1.35	0.92	35.35	22.68	1.35
1100	19.26	29.68	9.10	12.65	1.45	1.02	34.36	22.45	1.38
1150	19.69	29.26	8.57	15.23	1.36	1.04	34.72	22.58	1.45
1200	19.76	29.23	8.25	14.40	1.32	1.04	34.91	22.81	1.50

Note: Test data of Die packaged in industry standard 3x3 mm, 12-lead MCL package

Typical Performance Data

Definitions:

Input Return Loss = -S11 (dB)

Gain(Power Gain) = S21 (dB)

Reverse Isolation = -S12 (dB)

Output Return Loss = -S22 (dB)

TEST CONDITIONS: Vd = 5.00V, Id = 141mA @ Temperature = +25°C

FREQ	Gain	Isolation	Input Return Loss	Output Return Loss	Stability		IP-3 Output	1dB Comp. Output	Noise Figure
					K	Measure			
(MHz)	(dB)	(dB)	(dB)	(dB)	K	Measure	(dBm)	(dBm)	(dB)
1	24.69	29.23	10.49	11.20	1.08	0.57	38.64	20.51	3.20
3	25.03	28.87	13.71	22.38	1.08	0.61	38.87	20.60	1.99
5	24.99	28.43	14.23	32.65	1.06	0.58	39.06	20.60	1.84
7	24.89	28.13	14.44	33.52	1.04	0.56	39.25	20.69	1.75
9	24.78	27.98	14.69	28.06	1.04	0.56	39.47	20.90	1.61
10	24.73	27.80	14.76	26.23	1.03	0.55	39.57	20.95	1.04
20	24.12	26.82	15.41	19.33	1.01	0.50	40.52	22.44	1.10
30	23.71	26.32	16.13	17.70	1.01	0.47	41.25	23.15	1.04
40	23.48	26.00	16.42	17.12	1.02	0.44	41.61	23.49	1.04
50	23.36	25.91	16.50	16.56	1.03	0.45	41.70	23.95	1.02
60	23.25	25.79	16.75	16.58	1.03	0.43	41.72	23.85	1.02
70	23.19	25.70	16.86	16.47	1.03	0.42	41.85	23.91	1.03
80	23.15	25.77	16.92	16.43	1.03	0.43	41.87	23.99	1.05
90	23.12	25.66	16.95	16.43	1.03	0.42	41.87	24.08	1.07
100	23.09	25.66	17.07	16.48	1.03	0.42	41.92	24.09	1.11
150	23.03	25.65	17.40	16.80	1.04	0.43	39.26	24.20	1.08
200	22.99	25.67	17.74	17.38	1.04	0.44	39.17	24.15	1.11
250	22.97	25.67	18.20	18.23	1.04	0.44	38.24	24.42	1.10
300	22.94	25.77	18.64	19.29	1.05	0.47	40.19	24.45	1.11
350	22.91	25.72	19.09	20.61	1.04	0.47	40.60	24.44	1.15
400	22.87	25.88	19.64	22.37	1.05	0.50	38.60	24.42	1.14
450	22.81	25.94	20.16	24.30	1.06	0.52	39.17	24.26	1.15
500	22.73	26.07	20.63	25.37	1.06	0.55	39.58	24.50	1.15
550	22.53	26.29	20.59	23.64	1.08	0.59	38.63	23.98	1.16
600	22.27	26.57	18.14	23.35	1.10	0.65	37.58	24.13	1.17
650	22.44	26.46	18.17	26.05	1.09	0.62	37.70	24.03	1.13
700	22.40	26.50	18.39	22.74	1.09	0.63	37.46	24.00	1.21
750	22.29	26.63	18.23	20.02	1.10	0.65	37.40	23.80	1.18
800	22.14	26.85	17.72	17.87	1.11	0.68	37.61	23.95	1.19
850	21.94	27.03	17.06	16.12	1.12	0.70	37.26	24.11	1.18
900	21.69	27.32	16.15	14.56	1.14	0.73	37.11	24.02	1.20
950	21.33	27.74	14.96	13.15	1.18	0.78	36.17	23.83	1.21
1000	20.77	28.28	13.30	11.91	1.24	0.83	36.17	23.45	1.26
1050	19.88	29.20	11.13	11.32	1.36	0.92	35.69	23.12	1.36
1100	19.35	29.81	9.29	12.93	1.47	1.02	35.25	22.88	1.40
1150	19.78	29.33	8.75	15.67	1.37	1.03	35.36	23.02	1.45
1200	19.87	29.26	8.41	14.70	1.33	1.03	35.65	23.36	1.53

Note: Test data of Die packaged in industry standard 3x3 mm, 12-lead MCL package



Typical Performance Data

Definitions:

Input Return Loss = -S11 (dB)

Gain(Power Gain) = S21 (dB)

Reverse Isolation = -S12 (dB)

Output Return Loss = -S22 (dB)

TEST CONDITIONS: Vd = 5.25V, Id = 149mA @ Temperature = +25°C

FREQ	Gain	Isolation	Input Return Loss	Output Return Loss	Stability		IP-3 Output	1dB Comp. Output	Noise Figure
					K	Measure			
(MHz)	(dB)	(dB)	(dB)	(dB)	K	Measure	(dBm)	(dBm)	(dB)
1	24.74	29.13	10.55	11.18	1.07	0.55	39.03	20.85	-
3	25.08	28.64	13.86	22.39	1.06	0.58	39.23	21.01	-
5	25.04	28.47	14.38	32.74	1.06	0.58	39.38	21.05	-
7	24.95	28.27	14.58	33.36	1.05	0.57	39.59	21.13	-
9	24.83	28.03	14.79	27.91	1.04	0.56	39.80	21.22	-
10	24.78	27.82	14.88	26.10	1.03	0.55	39.90	21.26	1.09
20	24.17	26.74	15.46	19.35	1.00	0.48	40.85	23.02	1.12
30	23.75	26.33	16.05	17.60	1.01	0.46	41.60	23.59	1.06
40	23.52	26.01	16.40	17.02	1.02	0.43	41.95	23.92	1.04
50	23.40	25.92	16.53	16.52	1.04	0.43	42.07	24.39	1.05
60	23.29	25.81	16.64	16.50	1.02	0.42	42.21	24.28	1.04
70	23.23	25.77	16.73	16.41	1.03	0.42	42.21	24.35	1.04
80	23.19	25.73	16.84	16.36	1.03	0.42	42.27	24.42	1.07
90	23.16	25.76	16.86	16.36	1.03	0.42	42.27	24.52	1.08
100	23.13	25.66	16.93	16.40	1.03	0.41	42.35	24.53	1.10
150	23.07	25.68	17.27	16.71	1.04	0.42	39.95	24.64	1.13
200	23.04	25.72	17.62	17.29	1.04	0.44	42.28	24.59	1.11
250	23.02	25.77	18.03	18.13	1.04	0.45	41.80	24.86	1.10
300	22.99	25.78	18.54	19.19	1.04	0.46	39.45	24.89	1.11
350	22.96	25.79	19.06	20.52	1.05	0.47	38.75	24.89	1.18
400	22.92	25.94	19.63	22.37	1.05	0.50	37.54	24.88	1.15
450	22.87	25.93	20.22	24.52	1.05	0.51	38.28	24.72	1.12
500	22.79	26.10	20.82	26.05	1.06	0.54	39.27	24.97	1.18
550	22.59	26.30	20.93	24.43	1.08	0.58	38.27	24.44	1.20
600	22.33	26.62	18.43	24.16	1.10	0.64	38.40	24.60	1.20
650	22.51	26.50	18.47	27.54	1.09	0.62	38.20	24.50	1.16
700	22.47	26.58	18.77	23.59	1.09	0.63	37.29	24.48	1.17
750	22.36	26.70	18.63	20.56	1.10	0.65	37.17	24.28	1.22
800	22.21	26.85	18.15	18.24	1.11	0.67	38.02	24.43	1.22
850	22.02	27.10	17.46	16.40	1.13	0.70	37.24	24.59	1.24
900	21.77	27.36	16.53	14.77	1.15	0.73	37.26	24.39	1.22
950	21.41	27.75	15.28	13.30	1.18	0.77	36.96	24.29	1.23
1000	20.84	28.40	13.57	12.06	1.25	0.83	36.12	23.92	1.32
1050	19.94	29.29	11.31	11.48	1.38	0.92	36.11	23.58	1.35
1100	19.43	29.84	9.43	13.27	1.48	1.01	36.14	23.36	1.43
1150	19.88	29.35	8.91	16.12	1.38	1.03	36.02	23.51	1.45
1200	19.97	29.32	8.57	14.87	1.34	1.02	36.11	23.74	1.57

Note: Test data of Die packaged in industry standard 3x3 mm, 12-lead MCL package

Typical Performance Data

Definitions:

Input Return Loss = -S11 (dB)

Gain(Power Gain) = S21 (dB)

Reverse Isolation = -S12 (dB)

Output Return Loss = -S22 (dB)

TEST CONDITIONS: Vd = 7.60V, Id = 224mA @ Temperature = +25°C

FREQ	Gain	Isolation	Input Return Loss	Output Return Loss	Stability		IP-3 Output	1dB Comp. Output	Noise Figure
					K	Measure			
(MHz)	(dB)	(dB)	(dB)	(dB)	K	Measure	(dBm)	(dBm)	(dB)
1	25.00	29.26	10.98	11.05	1.07	0.53	41.68	24.85	-
3	25.35	28.69	14.73	22.10	1.06	0.55	41.61	24.98	-
5	25.30	28.50	15.31	30.86	1.05	0.54	41.49	24.96	-
7	25.20	28.26	15.46	31.17	1.04	0.54	41.67	25.13	-
9	25.08	28.25	15.63	27.13	1.04	0.55	41.74	25.19	-
10	25.01	27.87	15.45	24.94	1.02	0.52	41.83	25.21	1.31
20	24.36	26.83	15.77	19.25	1.00	0.47	42.49	26.38	1.31
30	23.93	26.39	15.86	17.68	1.01	0.44	43.15	26.32	1.23
40	23.69	26.24	16.00	17.02	1.02	0.44	43.56	26.59	1.21
50	23.56	26.02	15.90	16.71	1.02	0.43	43.78	28.24	1.20
60	23.45	25.97	16.03	16.58	1.03	0.42	44.09	27.10	1.16
70	23.39	25.96	16.03	16.45	1.03	0.43	44.33	27.34	1.18
80	23.35	25.91	16.05	16.40	1.03	0.42	44.19	27.07	1.17
90	23.31	25.89	16.09	16.41	1.03	0.42	44.45	27.47	1.21
100	23.29	25.91	16.13	16.45	1.03	0.43	44.34	27.55	1.25
150	23.23	25.83	16.44	16.76	1.04	0.42	42.96	27.62	1.25
200	23.20	25.87	16.75	17.32	1.04	0.43	40.94	27.64	1.22
250	23.18	25.86	17.16	18.17	1.04	0.44	42.92	27.80	1.22
300	23.16	25.86	17.70	19.25	1.04	0.45	42.17	27.85	1.23
350	23.13	26.00	18.24	20.64	1.05	0.47	38.01	27.95	1.27
400	23.11	26.02	18.87	22.67	1.05	0.48	38.63	27.91	1.25
450	23.06	26.17	19.59	25.70	1.06	0.51	40.84	27.87	1.28
500	22.99	26.19	20.43	31.10	1.06	0.53	42.35	28.01	1.29
550	22.81	26.44	20.99	39.90	1.08	0.57	43.34	27.64	1.27
600	22.53	26.76	18.83	34.06	1.11	0.63	42.43	27.73	1.28
650	22.72	26.64	18.71	32.14	1.09	0.61	41.30	27.71	1.27
700	22.70	26.72	19.08	25.28	1.10	0.61	44.15	27.81	1.35
750	22.61	26.85	19.07	21.57	1.10	0.63	41.78	27.65	1.33
800	22.47	27.04	18.66	18.92	1.12	0.66	43.57	27.65	1.39
850	22.28	27.29	17.97	16.88	1.13	0.68	41.35	27.63	1.36
900	22.03	27.58	16.97	15.15	1.16	0.72	41.94	27.54	1.38
950	21.67	27.99	15.66	13.66	1.20	0.76	41.90	26.84	1.43
1000	21.09	28.68	13.90	12.52	1.28	0.82	41.64	26.63	1.43
1050	20.18	29.59	11.64	12.26	1.43	0.91	40.06	26.19	1.51
1100	19.53	30.42	9.70	14.74	1.60	1.02	40.85	25.90	1.61
1150	19.95	30.04	9.02	18.04	1.49	1.03	41.00	26.70	1.62
1200	20.11	29.90	8.63	15.07	1.42	1.02	41.68	26.83	1.73

Note: Test data of Die packaged in industry standard 3x3 mm, 12-lead MCL package



Typical Performance Data

Definitions:

Input Return Loss = -S11 (dB)

Gain(Power Gain) = S21 (dB)

Reverse Isolation = -S12 (dB)

Output Return Loss = -S22 (dB)

TEST CONDITIONS: Vd = 8.00V, Id = 236mA @ Temperature = +25°C

FREQ	Gain	Isolation	Input Return Loss	Output Return Loss	Stability		IP-3 Output	1dB Comp. Output	Noise Figure
					K	Measure			
(MHz)	(dB)	(dB)	(dB)	(dB)	K	Measure	(dBm)	(dBm)	(dB)
1	25.00	29.23	11.03	11.06	1.07	0.53	41.17	25.22	2.87
3	25.35	28.74	14.88	22.04	1.06	0.55	40.94	25.32	1.84
5	25.31	28.45	15.47	30.39	1.05	0.54	40.81	25.28	1.49
7	25.20	28.15	15.60	30.86	1.04	0.52	41.00	25.35	1.52
9	25.08	28.09	15.74	27.06	1.03	0.53	41.05	25.55	1.35
10	25.01	27.84	15.62	24.51	1.02	0.52	41.15	25.59	1.40
20	24.36	26.81	15.80	19.35	1.00	0.46	41.83	26.80	1.39
30	23.93	26.44	15.89	17.70	1.01	0.45	42.68	26.68	1.28
40	23.69	26.24	15.95	17.06	1.02	0.44	42.89	26.96	1.26
50	23.56	25.96	15.96	16.69	1.02	0.43	43.33	28.68	1.25
60	23.45	25.98	15.95	16.60	1.03	0.42	43.53	27.46	1.26
70	23.39	25.95	15.94	16.52	1.03	0.42	43.50	27.74	1.28
80	23.35	25.83	15.97	16.46	1.03	0.41	43.49	27.41	1.26
90	23.32	25.87	16.04	16.47	1.03	0.42	43.56	27.87	1.29
100	23.29	25.89	16.05	16.50	1.03	0.42	43.80	28.31	1.30
150	23.23	25.84	16.34	16.82	1.04	0.42	40.24	28.02	1.30
200	23.20	25.88	16.63	17.37	1.04	0.44	43.04	28.04	1.29
250	23.18	25.92	17.07	18.23	1.04	0.45	39.88	28.18	1.29
300	23.16	25.92	17.57	19.30	1.04	0.45	44.87	28.25	1.29
350	23.14	26.01	18.10	20.66	1.05	0.47	39.66	28.34	1.34
400	23.11	26.01	18.74	22.72	1.05	0.48	40.58	28.31	1.35
450	23.07	26.18	19.43	25.77	1.06	0.51	43.22	28.28	1.34
500	22.99	26.26	20.27	31.15	1.07	0.53	42.35	28.46	1.35
550	22.81	26.49	20.85	43.22	1.08	0.58	43.47	28.04	1.36
600	22.53	26.78	18.75	34.76	1.11	0.64	43.37	28.11	1.39
650	22.73	26.69	18.59	30.67	1.10	0.61	40.36	28.11	1.37
700	22.71	26.72	18.98	24.77	1.10	0.61	42.77	28.20	1.38
750	22.61	26.87	18.95	21.24	1.10	0.63	42.38	28.05	1.39
800	22.47	27.11	18.54	18.74	1.12	0.66	41.25	28.03	1.44
850	22.29	27.31	17.87	16.71	1.13	0.68	40.81	27.90	1.39
900	22.03	27.62	16.90	15.03	1.16	0.72	43.27	27.81	1.48
950	21.67	28.10	15.58	13.56	1.21	0.76	40.24	27.06	1.47
1000	21.09	28.66	13.83	12.45	1.28	0.82	41.25	26.95	1.53
1050	20.16	29.70	11.58	12.24	1.44	0.92	39.94	26.39	1.58
1100	19.51	30.45	9.66	14.86	1.61	1.02	39.98	26.20	1.69
1150	19.94	30.04	8.98	18.10	1.50	1.03	42.31	27.05	1.74
1200	20.10	30.00	8.60	14.93	1.43	1.02	40.48	27.17	1.79

Note: Test data of Die packaged in industry standard 3x3 mm, 12-lead MCL package



Typical Performance Data

Definitions:

Input Return Loss = -S11 (dB)

Gain(Power Gain) = S21 (dB)

Reverse Isolation = -S12 (dB)

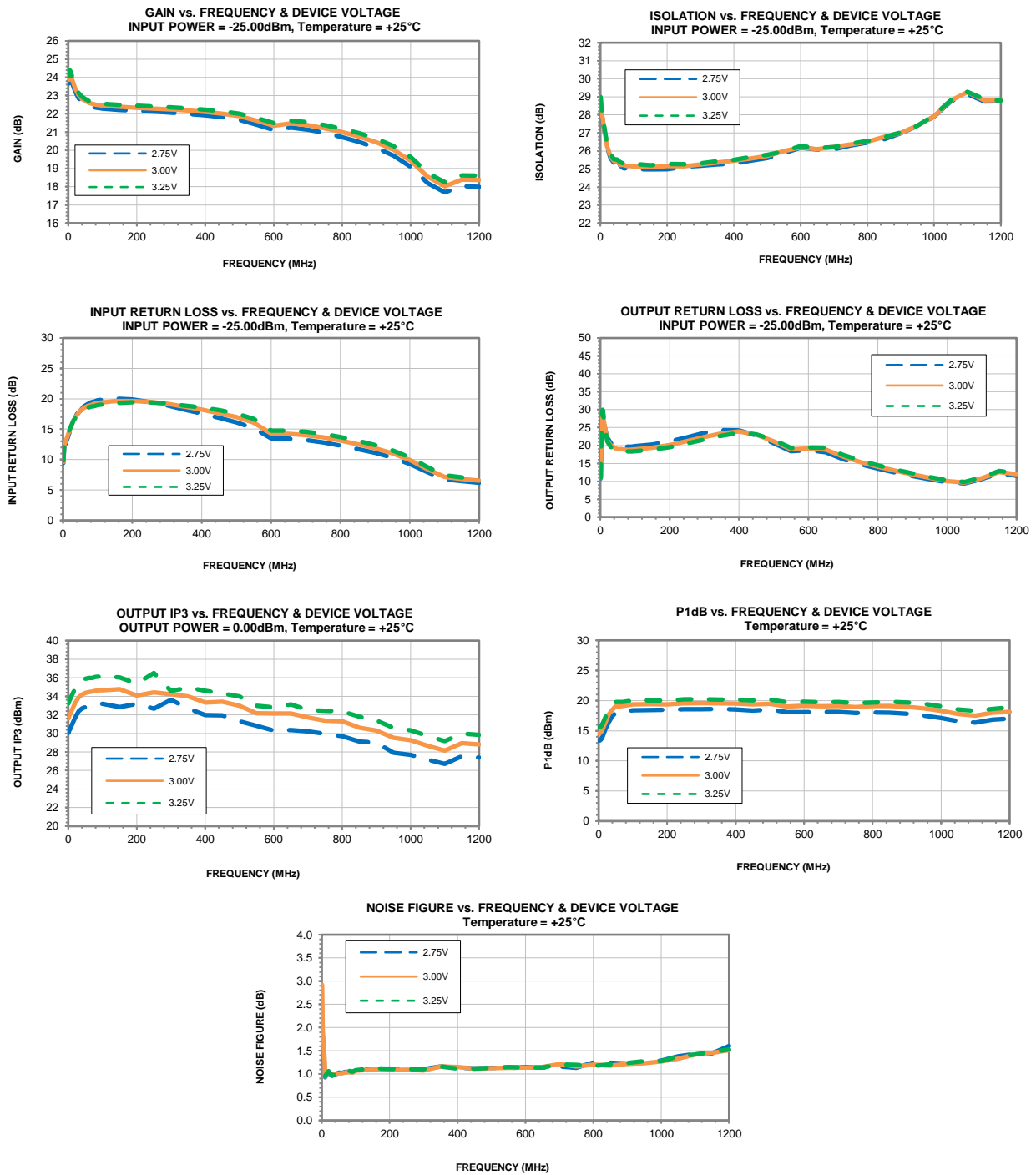
Output Return Loss = -S22 (dB)

TEST CONDITIONS: Vd = 8.40V, Id = 246mA @ Temperature = +25°C

FREQ	Gain	Isolation	Input Return Loss	Output Return Loss	Stability		IP-3 Output	1dB Comp. Output	Noise Figure
					K	Measure			
(MHz)	(dB)	(dB)	(dB)	(dB)	K	Measure	(dBm)	(dBm)	(dB)
1	24.98	29.11	11.15	11.03	1.07	0.51	40.46	25.58	-
3	25.33	28.89	15.08	21.93	1.07	0.57	40.21	25.69	-
5	25.29	28.63	15.62	29.84	1.06	0.56	40.09	25.76	-
7	25.18	28.35	15.77	30.44	1.05	0.55	40.33	25.84	-
9	25.06	28.05	15.85	27.09	1.03	0.53	40.39	25.93	-
10	25.00	27.83	15.97	25.11	1.03	0.51	40.44	25.95	1.47
20	24.35	26.98	15.86	19.35	1.01	0.48	41.20	27.22	1.46
30	23.91	26.45	15.87	17.86	1.01	0.45	41.80	27.02	1.36
40	23.68	26.18	15.90	17.26	1.02	0.44	42.31	27.31	1.30
50	23.54	26.14	16.02	16.77	1.03	0.43	42.48	29.07	1.31
60	23.44	25.98	15.86	16.75	1.03	0.43	42.71	27.79	1.31
70	23.37	25.90	15.84	16.65	1.03	0.42	42.87	28.15	1.33
80	23.33	25.94	15.89	16.59	1.03	0.43	42.97	27.72	1.32
90	23.30	25.85	15.92	16.60	1.03	0.42	43.08	28.25	1.35
100	23.28	25.91	15.96	16.65	1.03	0.43	43.09	28.68	1.36
150	23.22	25.81	16.24	16.97	1.04	0.42	41.45	28.42	1.37
200	23.18	25.88	16.52	17.53	1.04	0.44	42.87	28.40	1.39
250	23.17	25.86	16.93	18.40	1.04	0.44	41.98	28.53	1.35
300	23.15	25.96	17.44	19.46	1.05	0.46	43.39	28.60	1.34
350	23.12	25.96	17.98	20.85	1.05	0.47	39.79	28.68	1.40
400	23.09	26.06	18.59	22.87	1.05	0.49	38.23	28.71	1.39
450	23.05	26.14	19.26	25.94	1.06	0.51	41.81	28.69	1.38
500	22.98	26.29	20.05	31.28	1.07	0.54	43.49	28.79	1.40
550	22.79	26.43	20.60	49.39	1.08	0.58	42.17	28.44	1.43
600	22.52	26.85	18.56	36.16	1.12	0.64	40.68	28.43	1.43
650	22.71	26.67	18.39	28.96	1.10	0.61	40.12	28.51	1.37
700	22.69	26.76	18.77	23.93	1.10	0.62	41.79	28.54	1.47
750	22.59	26.88	18.74	20.76	1.11	0.63	42.44	28.39	1.45
800	22.45	27.13	18.32	18.39	1.12	0.66	43.57	28.34	1.47
850	22.26	27.36	17.66	16.46	1.14	0.69	40.93	28.18	1.49
900	22.01	27.69	16.67	14.83	1.17	0.72	41.10	28.10	1.51
950	21.64	28.08	15.39	13.40	1.20	0.76	40.10	27.30	1.57
1000	21.05	28.74	13.66	12.34	1.29	0.82	40.73	27.11	1.59
1050	20.12	29.78	11.46	12.20	1.46	0.92	41.34	26.54	1.66
1100	19.46	30.46	9.57	14.90	1.61	1.02	40.06	26.34	1.73
1150	19.90	30.13	8.90	17.99	1.51	1.04	40.17	27.34	1.84
1200	20.05	30.04	8.52	14.69	1.44	1.02	41.09	27.43	1.82

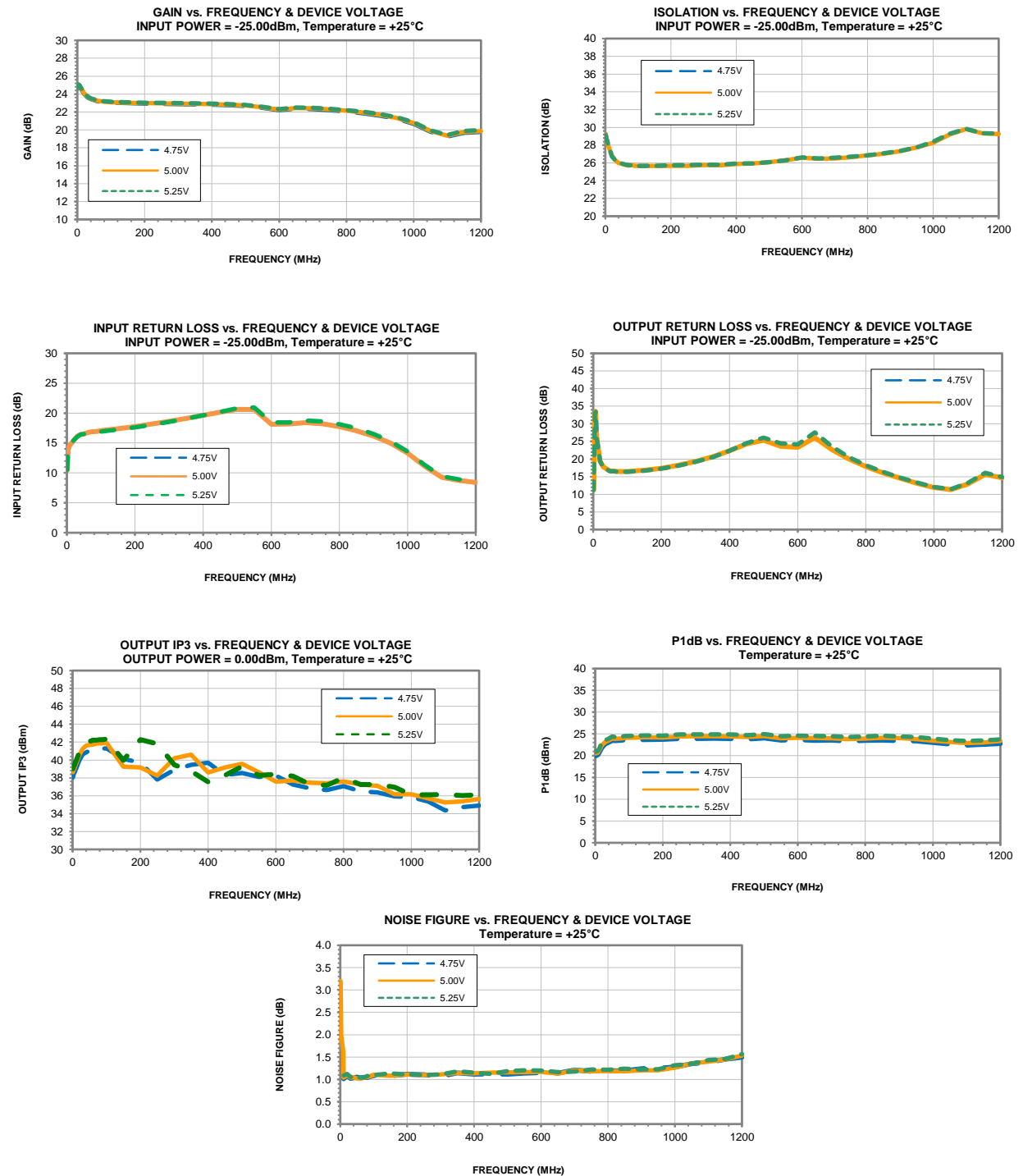
Note: Test data of Die packaged in industry standard 3x3 mm, 12-lead MCL package

Typical Performance Curves



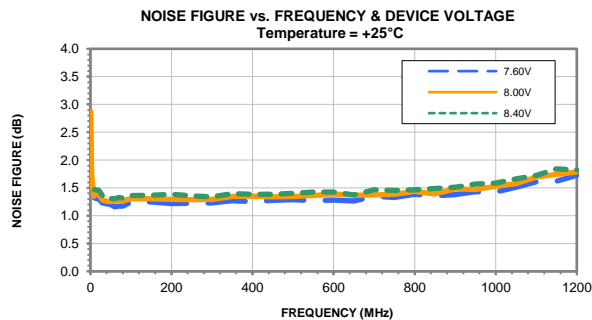
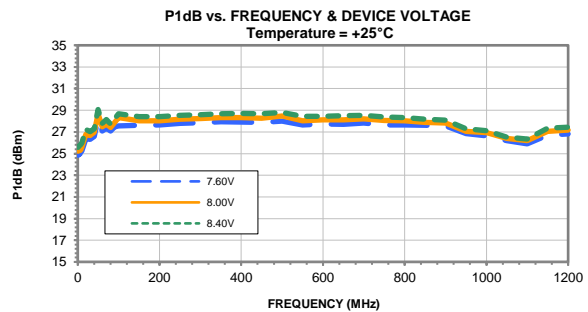
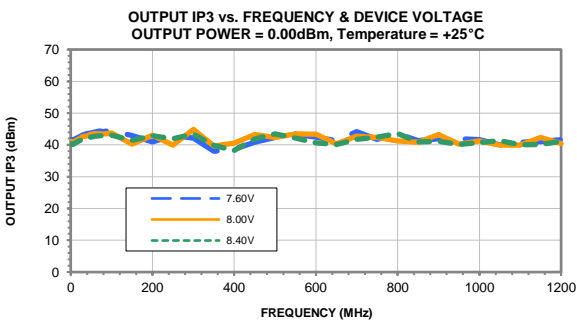
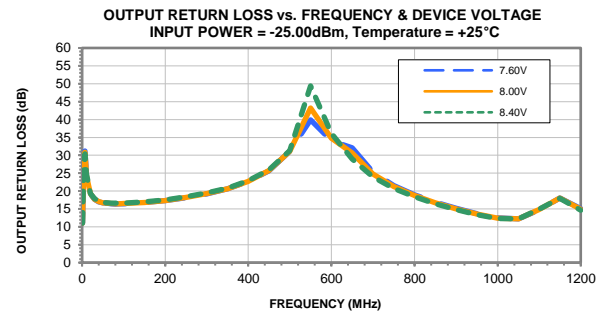
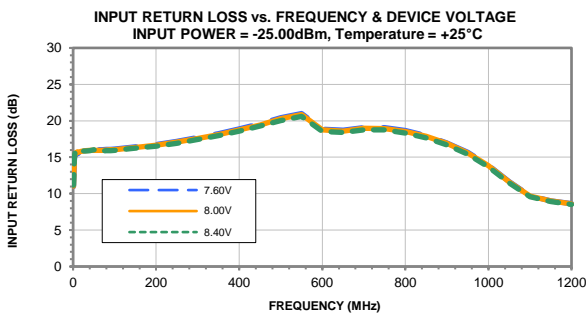
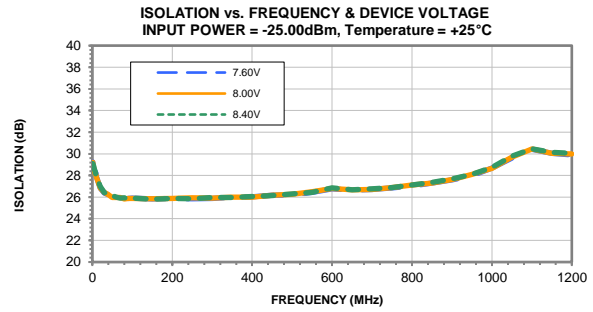
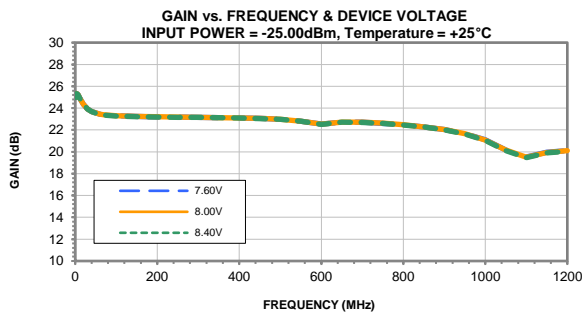
Note: Test data of Die packaged in industry standard 3x3 mm, 12-lead MCL package

Typical Performance Curves



Note: Test data of Die packaged in industry standard 3x3 mm, 12-lead MCL package

Typical Performance Curves



Note: Test data of Die packaged in industry standard 3x3 mm, 12-lead MCL package



All Mini-Circuits products are manufactured under exacting quality assurance and control standards, and are capable of meeting published specifications after being subjected to any or all of the following physical and environmental test.

Specification	Test/Inspection Condition	Reference/Spec
Operating Temperature	-40° to 85° C or -40° to 105° C or -55° to 105° C or -45° to 105° C Ambient Environment	Refer to Individual Model Data Sheet
Storage Environment (Die)	-65° to 150°C	Individual Model Data Sheet
Storage Environment(Packaging)	-40° to 70°C and 40 to 60% humidity (In Factory Shipped Package)	