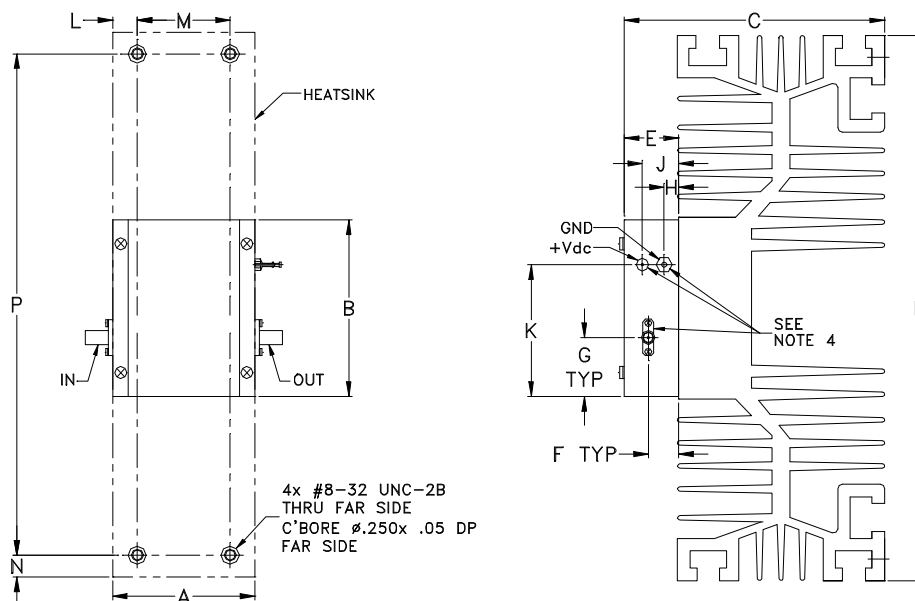
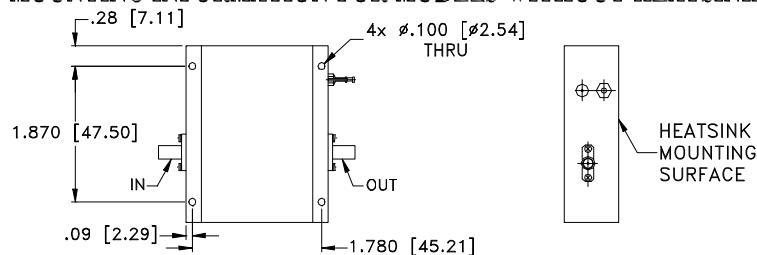


### Outline Dimensions



#### MOUNTING INFORMATION FOR MODELS WITHOUT HEATSINK



CASE #	A	B	C	D	E	F	G	H	J	K	L
BN1327	1.960 (49.78)	2.430 (61.72)	3.6 (91.44)	7.5 (190.50)	.74 (18.80)	.42 (10.67)	0.81 (20.57)	.20 (5.08)	.49 (12.45)	1.81 (45.97)	.36 (9.02)

CASE #	M	N	P	WT. GRAM	WT. WITHOUT HEATSINK GRAM
BN1327	1.250 (31.75)	.30 (7.62)	6.900 (175.26)	875	120

Dimensions are in inches (mm). Tolerances: 1Pl.  $\pm .1$ ; 2Pl.  $\pm .03$ ; 3 Pl.  $\pm .015$

#### Notes:

1. Case material: Aluminum alloy.
2. Case finish: Nickel plate.
3. Heat sink finish: Black anodize.
4. Shape of mounting flange may vary.



INTERNET <http://www.minicircuits.com>

P.O. Box 350166, Brooklyn, New York 11235-0003 (718) 934-4500 Fax (718) 332-4661

Distribution Centers NORTH AMERICA 800-654-7949 • 417-335-5935 • Fax 417-335-5945 • EUROPE 44-1252-832600 • Fax 44-1252-837010

Mini-Circuits ISO 9001 & ISO 14001 Certified