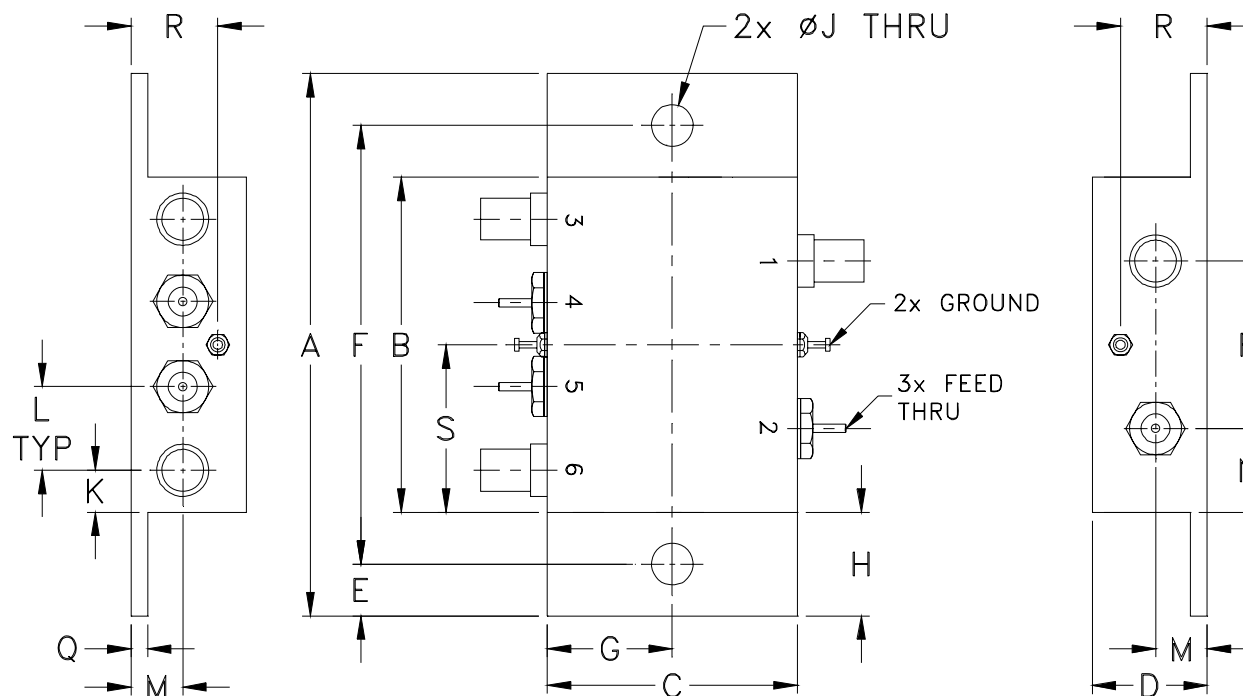


Outline Dimensions



CASE#	A	B	C	D	E	F	G	H	J	K	L	M	N
CY1481	3.24 (82.30)	2.00 (50.80)	1.50 (38.10)	.69 (17.53)	.31 (7.87)	2.620 (66.55)	.75 (19.05)	.62 (15.75)	.250 (6.35)	.25 (6.35)	.50 (12.70)	.31 (7.87)	.50 (12.70)

CASE#	P	Q	R	S	WT. GRAMS
CY1481	1.00 (25.40)	.10 (2.54)	.52 (13.21)	1.00 (25.40)	80.0

Dimensions are in inches (mm). Tolerances: 2 Pl. $\pm .03$; 3 Pl. $\pm .015$

Notes:

- Case material: Aluminum alloy.
- Case finish and mounting bracket finish:
For RoHS Case Styles: Clear chemical conversion coating, non-chrome or trivalent chrome based.



Distribution Centers NORTH AMERICA 800-654-7949 • 417-335-5935 • Fax 417-335-5945 • EUROPE 44-1252-832600 • Fax 44-1252-837010

Mini-Circuits ISO 9001 & ISO 14001 Certified

INTERNET <http://www.minicircuits.com>

P.O. Box 350166, Brooklyn, New York 11235-0003 (718) 934-4500 Fax (718) 332-4661