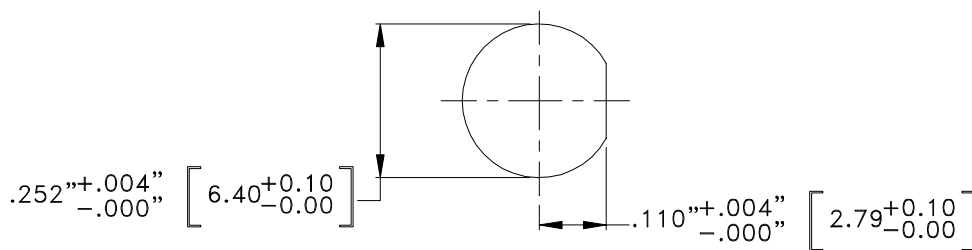
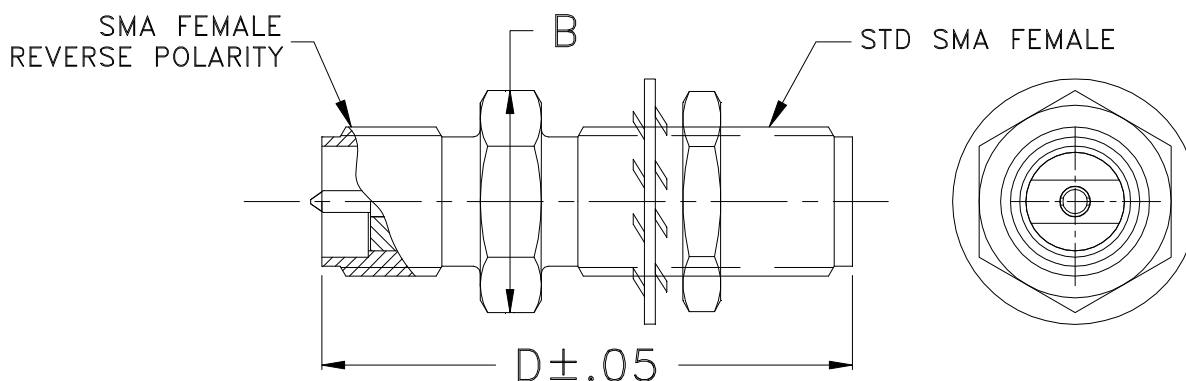


Outline Dimensions



MOUNTING DETAIL

CASE#	A	B	C	D	E	WT. GRAM
DJ2747	--	.36 (9.14)	--	.87 (22.10)	--	3.6

Dimensions are in inches (mm). Tolerances: 2 Pl. ± .03; 3 Pl. ± .015

Notes:

1. Case material: Stainless steel.
2. Finish: Passivation
3. Hex nut & lock washer included.
4. Recommended wall (panel) thickness: .100....250".



P.O. Box 350166, Brooklyn, New York 11235-0003 (718) 934-4500 Fax (718) 332-4661 For detailed performance specs & shopping online see Mini-Circuits web site



The Design Engineers Search Engine Provides ACTUAL Data Instantly From MINI-CIRCUITS At: www.minicircuits.com

RF/IF MICROWAVE COMPONENTS