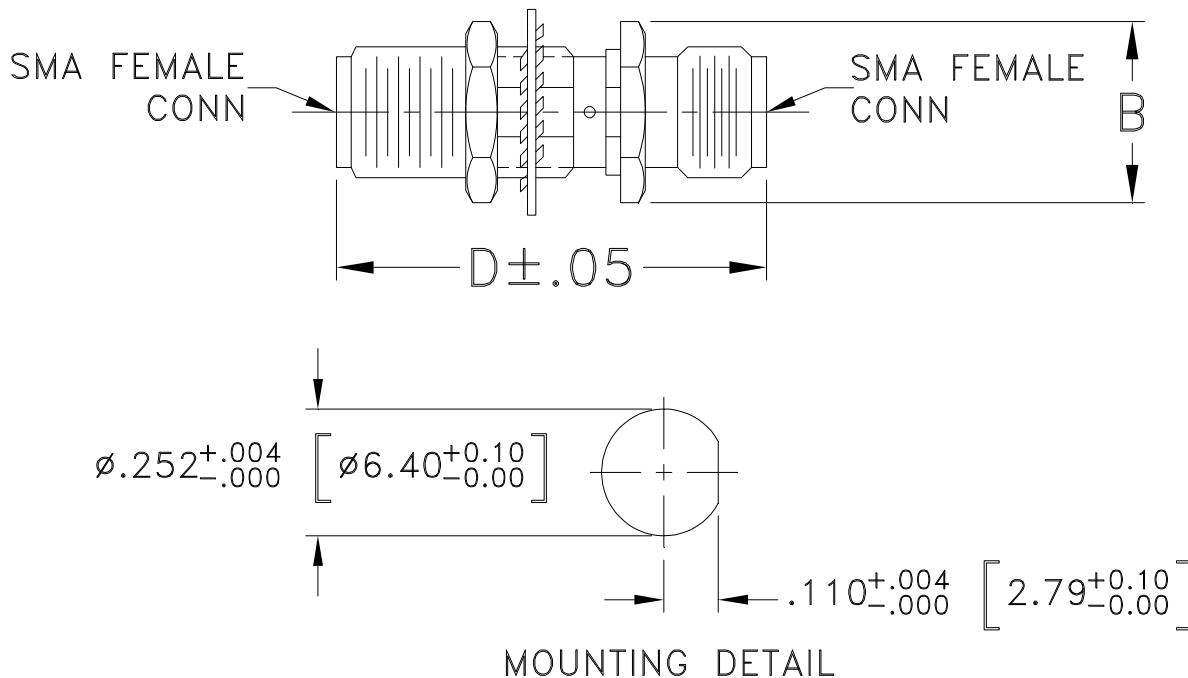


Outline Dimensions



CASE#	A	B	C	D	E	WT. GRAM
DJ952	--	.36 (9.14)	--	.87 (22.10)	--	3.6

Dimensions are in inches (mm). Tolerances: 2 Pl. ± .03; 3 Pl. ± .015

Notes:

1. Case material: Stainless steel.
2. Finish: Passivation.
3. Hex nut & lock washer included.
4. Recommended wall (panel) thickness: .100....250".