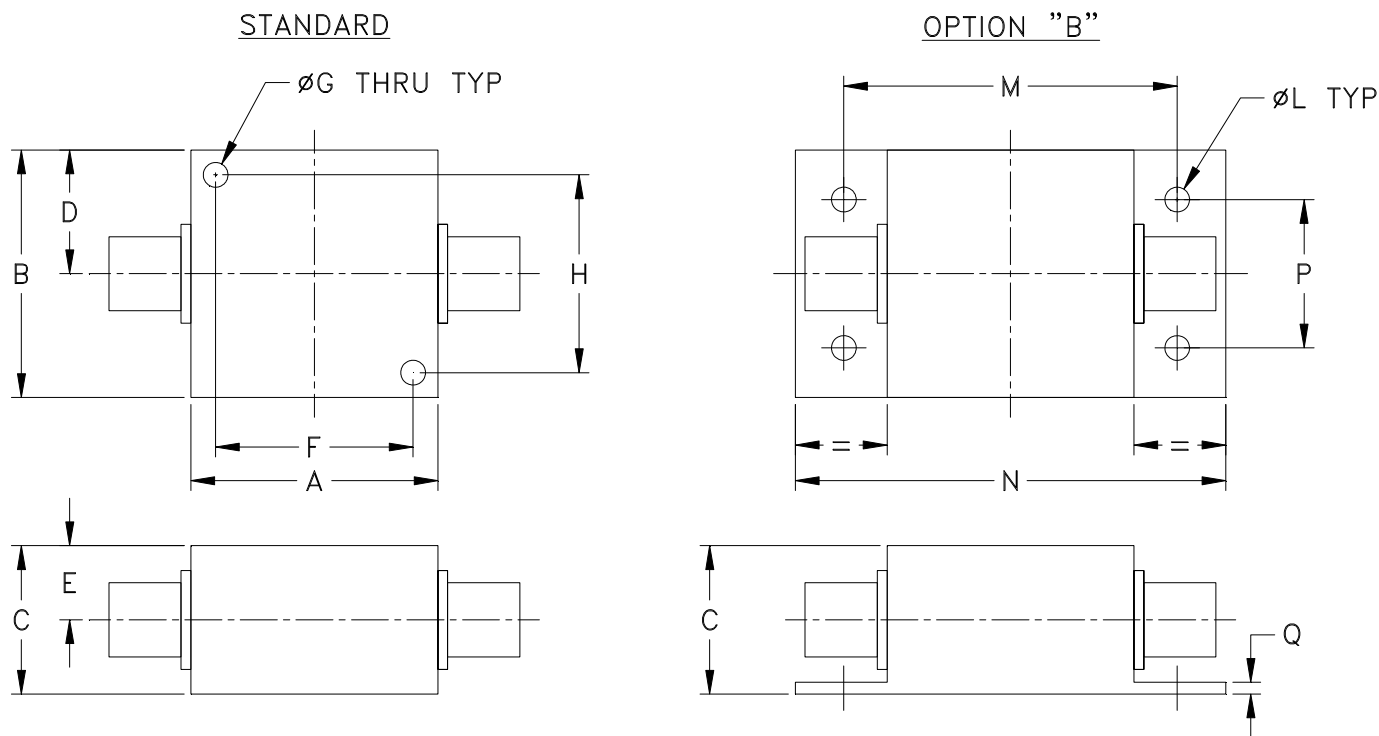


Outline Dimensions

H16-1



CASE#	A	B	C	D	E	F	G	H	J	K	L	M	N
H16-1	1.25 (31.75)	1.25 (31.75)	.81 (20.57)	.63 (16.00)	.41 (10.41)	1.000 (25.40)	.125 (3.18)	1.000 (25.40)	--	--	.125 (3.18)	1.688 (42.88)	2.19 (55.63)

CASE#	P	Q	WT.GRAMS
H16-1	.750 (19.05)	.06 (1.52)	70

Dimensions are in inches (mm). Tolerances: 2PL. ± .03; 3PL. ± .015

Notes:

1. Case material: Aluminum alloy.
2. Case finish:
For RoHS Case Styles: Clear chemical conversion coating, non-chrome or trivalent chrome based.
3. Mounting bracket available on request. Add suffix B to part number.
4. Bracket version, option B, dimension "C" changes from .81 to 1.00 inches when connectors are type N.
5. Refer to the individual model data sheet for the type of connectors available.

Mini-Circuits®
ISO 9001 ISO 14001 CERTIFIED

ALL NEW
minicircuits.com

P.O. Box 350166, Brooklyn, New York 11235-0003 (718) 934-4500 Fax (718) 332-4661 For detailed performance specs & shopping online see Mini-Circuits web site



The Design Engineers Search Engine Provides ACTUAL Data Instantly From MINI-CIRCUITS At: www.minicircuits.com

RF/IF MICROWAVE COMPONENTS