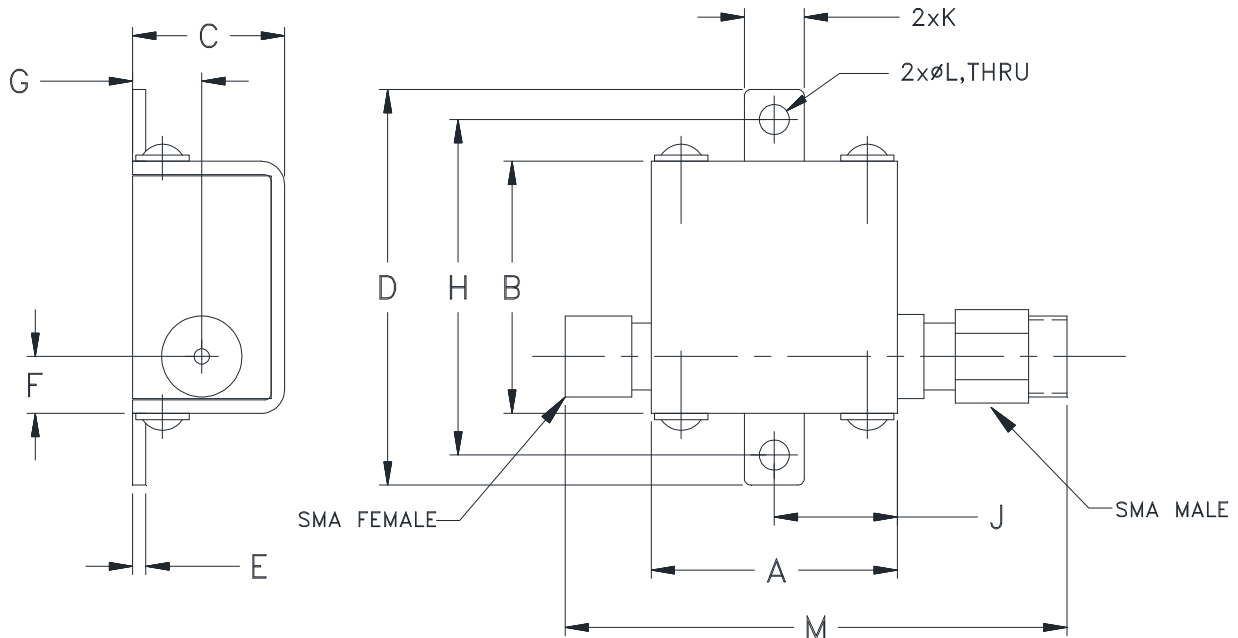


## Outline Dimensions

## KD1465



CASE #.	A	B	C	D	E	F	G	H	J	K	L	M	WT. GRAM
KD1465	0.74 (18.80)	.75 (19.05)	.46 (11.68)	1.18 (29.97)	.04 (1.02)	.17 (4.32)	.21 (5.33)	1.00 (25.40)	.37 (9.40)	.18 (4.57)	.09 (2.29)	1.51 (38.4)	21.4

**Dimensions are in inches (mm). Tolerances: 2Pl.  $\pm .03$ ; 3Pl.  $\pm .015$**   
**Tolerance on hole size and interaxes dimensions to be  $\pm .005$ .**

**Note:**

1. Case material: Brass
2. Case finish: Gold
3. Cover: Nickel plated.



**Distribution Centers** NORTH AMERICA 800-654-7949 • 417-335-5935 • Fax 417-335-5945 • EUROPE 44-1252-832600 • Fax 44-1252-837010

Mini-Circuits ISO 9001 & ISO 14001 Certified

INTERNET <http://www.minicircuits.com>

P.O. Box 350166, Brooklyn, New York 11235-0003 (718) 934-4500 Fax (718) 332-4661