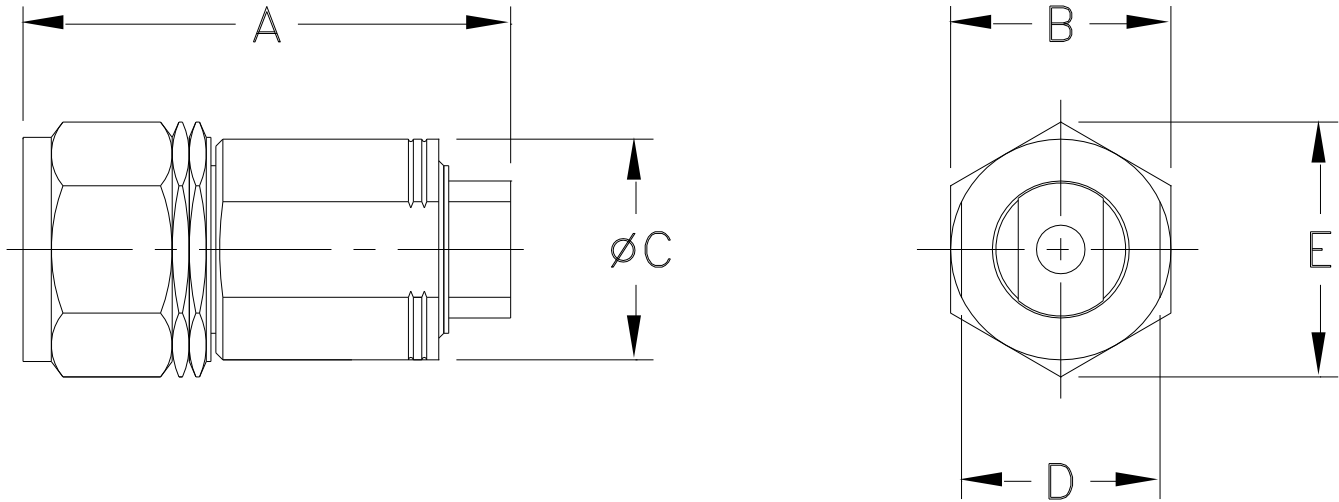


Case Style

LL

Outline Dimensions

LL2587



CASE #	A	B	C	D	E	WT. GRAM
LL2587	.69 (17.5)	.312 (8.00)	.31 (7.9)	.281 (7.14)	.36 (9.14)	4.6

Dimensions are in inches (mm). Tolerances: 2Pl. $\pm .030$; 3Pl. $\pm .015$

Notes:

1. Case material: Stainless Steel.
2. Case Finish: Passivated.

 **Mini-Circuits®**
ISO 9001 ISO 14001 CERTIFIED

ALL NEW
 minicircuits.com

P.O. Box 350166, Brooklyn, New York 11235-0003 (718) 934-4500 Fax (718) 332-4661 For detailed performance specs & shopping online see Mini-Circuits web site



The Design Engineers Search Engine Provides ACTUAL Data Instantly From MINI-CIRCUITS At: www.minicircuits.com

RF/IF MICROWAVE COMPONENTS